

For Research Use Only

ESAM Polyclonal antibody

Catalog Number: 12445-1-AP

1 Publications



Basic Information

Catalog Number:

12445-1-AP

Size:

150ul , Concentration: 173 µg/ml by Bradford method using BSA as the standard;

Source:

Rabbit

Isotype:

IgG

Immunogen Catalog Number:

AG2962

GenBank Accession Number:

BC016868

GeneID (NCBI):

90952

UNIPROT ID:

Q96AP7

Full Name:

endothelial cell adhesion molecule

Calculated MW:

390 aa, 41 kDa

Observed MW:

56-58 kDa

Purification Method:

Antigen affinity purification

Recommended Dilutions:

WB 1:500-1:2400

Applications

Tested Applications:

WB, ELISA

Cited Applications:

WB

Species Specificity:

human, mouse, rat

Cited Species:

human

Positive Controls:

WB : human lung tissue, human heart tissue

Notable Publications

Author	Pubmed ID	Journal	Application
Miao Li	32637582	Mol Ther Oncolytics	WB

Storage

Storage:

Store at -20°C. Stable for one year after shipment.

Storage Buffer:

PBS with 0.02% sodium azide and 50% glycerol pH 7.3.

Aliquoting is unnecessary for -20°C storage

*** 20ul sizes contain 0.1% BSA

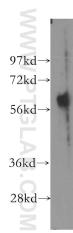
For technical support and original validation data for this product please contact:

T: 1 (888) 4PTGLAB (1-888-478-4522) (toll free in USA), or 1(312) 455-8498 (outside USA)

E: proteintech@ptglab.com
W: ptglab.com

This product is exclusively available under Proteintech Group brand and is not available to purchase from any other manufacturer.

Selected Validation Data



human lung tissue were subjected to SDS PAGE followed by western blot with 12445-1-AP (ESAM antibody) at dilution of 1:500 incubated at room temperature for 1.5 hours.