

For Research Use Only

EPS8 Polyclonal antibody

Catalog Number: 12455-1-AP

Featured Product

2 Publications



Basic Information

Catalog Number:

12455-1-AP

Size:

150ul, Concentration: 800 ug/ml by Nanodrop;

Source:

Rabbit

Isotype:

IgG

Immunogen Catalog Number:

AG3121

GenBank Accession Number:

BC030010

GeneID (NCBI):

2059

UNIPROT ID:

Q12929

Full Name:

epidermal growth factor receptor pathway substrate 8

Calculated MW:

822 aa, 92 kDa

Observed MW:

97 kDa

Purification Method:

Antigen affinity purification

Recommended Dilutions:

WB 1:500-1:2000

IP 0.5-4.0 ug for 1.0-3.0 mg of total protein lysate

IHC 1:50-1:500

IF/ICC 1:10-1:100

Applications

Tested Applications:

WB, IHC, IF/ICC, IP, ELISA

Cited Applications:

WB, IHC

Species Specificity:

human

Cited Species:

human

Positive Controls:

WB : HEK-293T cells, HeLa cells

IP : HeLa cells,

IHC : human breast cancer tissue,

IF/ICC : A375 cells,

Note-IHC: suggested antigen retrieval with TE buffer pH 9.0; (*) Alternatively, antigen retrieval may be performed with citrate buffer pH 6.0

Background Information

Epidermal growth factor receptor Pathway Substrate 8 (EPS8) is a crucial regulator of the actin cytoskeleton dynamics accompanying cell motility and invasion. This protein contains one PH domain and one SH3 domain leading to its binding activity with multiple cellular targets. EPS8 can function as a unique actin capping protein specifically required for dendritic cell migration and plays roles in the regulation of axonal filopodia in neuronal development and synapse formation. The EPS8 gene may contribute to the development of a subset of colorectal cancers and could have applications in diagnosis and treatment.

Notable Publications

Author	Pubmed ID	Journal	Application
Mingzhu Tan	34391775	Exp Cell Res	IHC, WB
Jieyun Zhang	32147678	Acta Biochim Biophys Sin (Shanghai)	WB

Storage

Storage:

Store at -20°C. Stable for one year after shipment.

Storage Buffer:

PBS with 0.02% sodium azide and 50% glycerol pH 7.3.

Aliquoting is unnecessary for -20°C storage

*** 20ul sizes contain 0.1% BSA

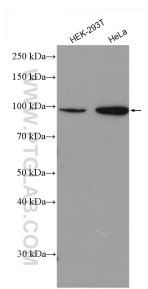
For technical support and original validation data for this product please contact:

T: 1 (888) 4PTGLAB (1-888-478-4522) (toll free in USA), or 1(312) 455-8498 (outside USA)

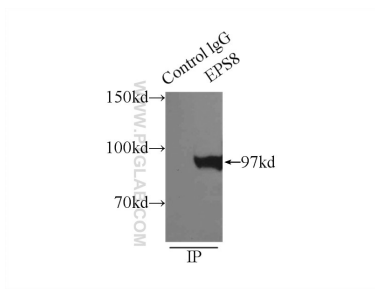
E: proteintech@ptglab.com
W: ptglab.com

This product is exclusively available under Proteintech Group brand and is not available to purchase from any other manufacturer.

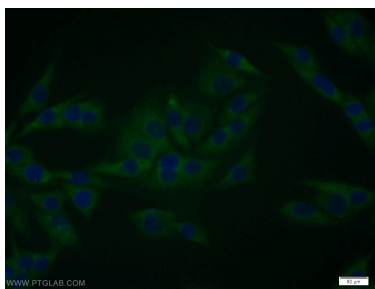
Selected Validation Data



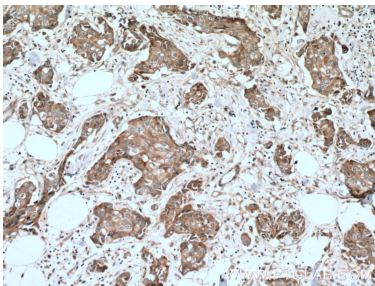
Various lysates were subjected to SDS PAGE followed by western blot with 12455-1-AP (EPS8 antibody) at dilution of 1:1000 incubated at room temperature for 1.5 hours.



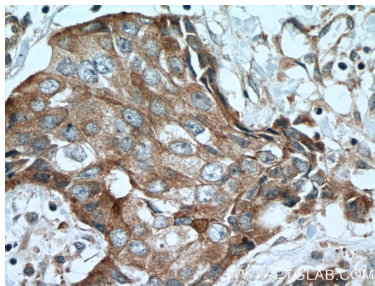
IP result of anti-EPS8 (IP:12455-1-AP, 3ug; Detection:12455-1-AP 1:500) with HeLa cells lysate 3800ug.



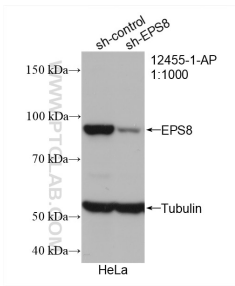
Immunofluorescent analysis of A375 cells using 12455-1-AP (EPS8 antibody) at dilution of 1:25 and Alexa Fluor 488-conjugated Goat Anti-Rabbit IgG(H+L).



Immunohistochemical analysis of paraffin-embedded human breast cancer tissue slide using 12455-1-AP (EPS8 antibody) at dilution of 1:100 (under 10x lens. Heat mediated antigen retrieval with Tris-EDTA buffer (pH 9.0).



Immunohistochemical analysis of paraffin-embedded human breast cancer tissue slide using 12455-1-AP (EPS8 antibody) at dilution of 1:100 (under 40x lens. Heat mediated antigen retrieval with Tris-EDTA buffer (pH 9.0).



WB result of EPS8 antibody (12455-1-AP; 1:1000; incubated at room temperature for 1.5 hours) with sh-Control and sh-EPS8 transfected HeLa cells.