

For Research Use Only

SPAG6 Polyclonal antibody

Catalog Number: 12462-1-AP

9 Publications



Basic Information

Catalog Number:

12462-1-AP

Size:

150ul, Concentration: 400 ug/ml by Nanodrop and 133 ug/ml by Bradford method using BSA as the standard;

Source:

Rabbit

Isotype:

IgG

Immunogen Catalog Number:

AG3130

GenBank Accession Number:

BC030585

GeneID (NCBI):

9576

UNIPROT ID:

O75602

Full Name:

sperm associated antigen 6

Calculated MW:

458 aa, 50 kDa

Observed MW:

50-55 kDa

Purification Method:

Antigen affinity purification

Recommended Dilutions:

WB 1:200-1:1000

IP 0.5-4.0 ug for 1.0-3.0 mg of total protein lysate

Applications

Tested Applications:

WB, IP, ELISA

Cited Applications:

WB, IHC, IF

Species Specificity:

human, mouse, rat

Cited Species:

human, mouse

Positive Controls:

WB : mouse testis tissue, Jurkat cells, PC-3 cells

IP : mouse testis tissue,

Background Information

Sperm-associated antigen 6 (SPAG6) is an axonemal protein ubiquitously expressed in tissues containing ciliated cells. SPAG6 is essential for sperm motility and fertility. As a novel cancer-testis antigen, SPAG6 is overexpressed in myeloid malignancies. Recently, SPAG6 has been found to negatively regulate neuronal migration during mouse brain development.

Notable Publications

Author	Pubmed ID	Journal	Application
Ranjha Khan	34867808	Front Endocrinol (Lausanne)	IF
Runchuan Yan	26130477	J Mol Neurosci	WB, IF
Tao Liu	39686771	Asian J Androl	IF

Storage

Storage:

Store at -20°C. Stable for one year after shipment.

Storage Buffer:

PBS with 0.02% sodium azide and 50% glycerol pH 7.3.

Aliquoting is unnecessary for -20°C storage

*** 20ul sizes contain 0.1% BSA

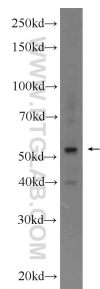
For technical support and original validation data for this product please contact:

T: 1 (888) 4PTGLAB (1-888-478-4522) (toll free in USA), or 1(312) 455-8498 (outside USA)

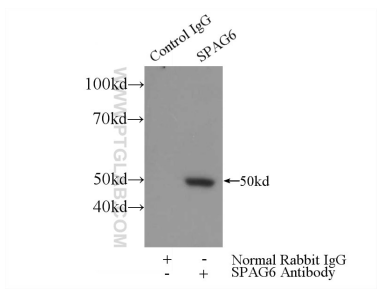
E: proteintech@ptglab.com
W: ptglab.com

This product is exclusively available under Proteintech Group brand and is not available to purchase from any other manufacturer.

Selected Validation Data



mouse testis tissue were subjected to SDS PAGE followed by western blot with 12462-1-AP (SPAG6 Antibody) at dilution of 1:300 incubated at room temperature for 1.5 hours.



IP result of anti-SPAG6 (IP:12462-1-AP, 3ug; Detection:12462-1-AP 1:300) with mouse testis tissue lysate 4000ug.