

For Research Use Only

# PANK1/2/3 Polyclonal antibody

Catalog Number: 12466-1-AP

1 Publications



## Basic Information

Catalog Number:

12466-1-AP

Size:

150ul, Concentration: 200 ug/ml by Nanodrop and 200 ug/ml by Bradford method using BSA as the standard;

Source:

Rabbit

Isotype:

IgG

Immunogen Catalog Number:

AG3140

GenBank Accession Number:

BC013705

GeneID (NCBI):

79646

UNIPROT ID:

Q9H999

Full Name:

pantothenate kinase 3

Calculated MW:

370 aa, 41 kDa

Observed MW:

41 kDa

Purification Method:

Antigen affinity purification

Recommended Dilutions:

WB 1:500-1:2000

IHC 1:20-1:200

## Applications

Tested Applications:

WB, IHC, ELISA

Cited Applications:

WB

Species Specificity:

human

Cited Species:

sheep

**Note-IHC: suggested antigen retrieval with TE buffer pH 9.0; (\*) Alternatively, antigen retrieval may be performed with citrate buffer pH 6.0**

Positive Controls:

WB : HepG2 cells,

IHC : human hepatocirrhosis tissue, human breast cancer tissue, human liver cancer tissue

## Notable Publications

Author	Pubmed ID	Journal	Application
Zhiyun Hao	36555241	Int J Mol Sci	WB

## Storage

Storage:

Store at -20°C. Stable for one year after shipment.

Storage Buffer:

PBS with 0.02% sodium azide and 50% glycerol pH 7.3.

Aliquoting is unnecessary for -20°C storage

\*\*\* 20ul sizes contain 0.1% BSA

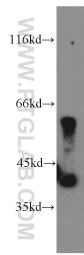
For technical support and original validation data for this product please contact:

T: 1 (888) 4PTGLAB (1-888-478-4522) (toll free in USA), or 1(312) 455-8498 (outside USA)

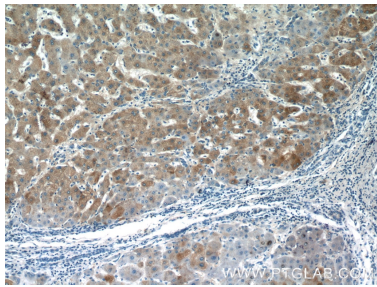
E: [proteintech@ptglab.com](mailto:proteintech@ptglab.com)  
W: [ptglab.com](http://ptglab.com)

This product is exclusively available under Proteintech Group brand and is not available to purchase from any other manufacturer.

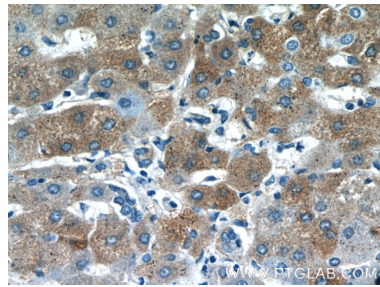
Selected Validation Data



HepG2 cells were subjected to SDS PAGE followed by western blot with 12466-1-AP (PANK1/2/3 antibody) at dilution of 1:500 incubated at room temperature for 1.5 hours.



Immunohistochemical analysis of paraffin-embedded human hepatocirrhosis tissue slide using 12466-1-AP (PANK1/2/3 antibody) at dilution of 1:50 (under 10x lens).



Immunohistochemical analysis of paraffin-embedded human hepatocirrhosis tissue slide using 12466-1-AP (PANK1/2/3 antibody) at dilution of 1:50 (under 40x lens).