

For Research Use Only

NRF1/nuclear respiratory factor 1 Polyclonal antibody

Catalog Number: 12482-1-AP

Featured Product

91 Publications



Basic Information

Catalog Number:

12482-1-AP

Size:

150ul, Concentration: 330 ug/ml by Nanodrop and 187 ug/ml by Bradford method using BSA as the standard;

Source:

Rabbit

Isotype:

IgG

Immunogen Catalog Number:

AG3172

GenBank Accession Number:

BC016925

GeneID (NCBI):

4899

UNIPROT ID:

Q16656

Full Name:

nuclear respiratory factor 1

Calculated MW:

522 aa, 56 kDa

Observed MW:

67 kDa, 45 kDa

Purification Method:

Antigen affinity purification

Recommended Dilutions:

WB 1:500-1:3000

IHC 1:50-1:500

Applications

Tested Applications:

WB, IHC, ELISA

Cited Applications:

WB, IHC, IF

Species Specificity:

human, mouse, rat

Cited Species:

human, mouse, rat, pig, chicken, zebrafish, goat, duck, ducks

Note-IHC: suggested antigen retrieval with TE buffer pH 9.0; (*) Alternatively, antigen retrieval may be performed with citrate buffer pH 6.0

Positive Controls:

WB : A549 cells, human lung tissue, HEK-293T cells

IHC : human stomach tissue,

Background Information

NRF1, also named as Alpha-pal and NRF-1, belongs to the NRF1/Ewg family. It is a transcription factor that activates the expression of the EIF2S1 (EIF2-alpha) gene. NRF1 is implicated in the control of nuclear genes required for respiration, heme biosynthesis, and mitochondrial DNA transcription and replication. It plays a critical role in regulating the expression of many antioxidant response element (ARE)-dependent genes. NRF1 exists various isoforms and long isoform is about 67 kDa and short isoform is about 45 kDa.

Notable Publications

Author	Pubmed ID	Journal	Application
Longlong Li	32940033	J Agric Food Chem	WB
Bin Lou	32980394	Toxicol Appl Pharmacol	WB
Kalaiselvi Sivalingam	32978730	Mol Neurobiol	WB

Storage

Storage:

Store at -20°C. Stable for one year after shipment.

Storage Buffer:

PBS with 0.02% sodium azide and 50% glycerol, pH7.3

Aliquoting is unnecessary for -20°C storage

*** 20ul sizes contain 0.1% BSA

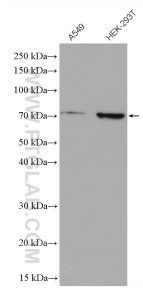
For technical support and original validation data for this product please contact:

T: 1 (888) 4PTGLAB (1-888-478-4522) (toll free in USA), or 1(312) 455-8498 (outside USA)

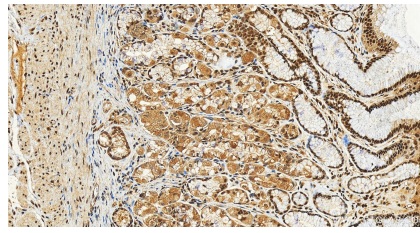
E: proteintech@ptglab.com
W: ptglab.com

This product is exclusively available under Proteintech Group brand and is not available to purchase from any other manufacturer.

Selected Validation Data



Various lysates were subjected to SDS PAGE followed by western blot with 12482-1-AP (NRF1/nuclear respiratory factor 1 antibody) at dilution of 1:1500 incubated at room temperature for 1.5 hours.



Immunohistochemical analysis of paraffin-embedded human normal stomach slide using 12482-1-AP (NRF1/nuclear respiratory factor 1 antibody) at dilution of 1:200 (under 20x lens). Heat mediated antigen retrieval with Tris-EDTA buffer (pH 9.0).