

For Research Use Only

BMP4 Polyclonal antibody

Catalog Number: 12492-1-AP

18 Publications



Basic Information

Catalog Number: 12492-1-AP	GenBank Accession Number: BC020546	Purification Method: Antigen affinity purification
Size: 150ul , Concentration: 500 µg/ml by Nanodrop;	GeneID (NCBI): 652	Recommended Dilutions: WB 1:200-1:1000 IHC 1:50-1:500
Source: Rabbit	Full Name: bone morphogenetic protein 4	
Isotype: IgG	Calculated MW: 47 kDa	
Immunogen Catalog Number: AG3191	Observed MW: 47 kDa	

Applications

Tested Applications: IHC, WB, ELISA	Positive Controls:
Cited Applications: IF, IHC, WB	WB : mouse heart tissue, rat heart tissue
Species Specificity: human, mouse, rat	IHC : human prostate hyperplasia tissue,
Cited Species: human, goat, rat, mouse	

Note-IHC: suggested antigen retrieval with TE buffer pH 9.0; (*) Alternatively, antigen retrieval may be performed with citrate buffer pH 6.0

Background Information

BMP4, also named as BMP2B and DVR4, belongs to the TGF-beta family. BMPs have been shown to promote astroglial differentiation both in vitro and in vivo. BMP4 have been shown to be components of serum and are thought to be responsible for this differentiation. BMP4 are expressed mainly in neurons, with minimal expression detected in astrocytes and oligodendrocytes.

Notable Publications

Author	Pubmed ID	Journal	Application
Jia Liu	36145624	Pharmaceutics	IHC
Pengfei Xu	36435763	BMC Musculoskelet Disord	WB
Jianglan Zhang	31730904	Cancer Lett	IHC

Storage

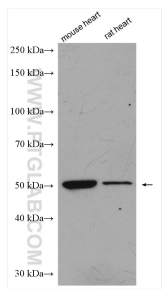
Storage:
Store at -20°C. Stable for one year after shipment.
Storage Buffer:
PBS with 0.02% sodium azide and 50% glycerol pH 7.3.
Aliquoting is unnecessary for -20°C storage

*** 20ul sizes contain 0.1% BSA

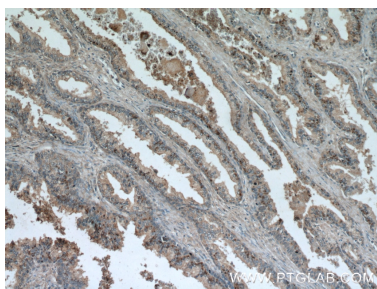
For technical support and original validation data for this product please contact:
T: 1 (888) 4PTGLAB (1-888-478-4522) (toll free in USA), or 1(312) 455-8498 (outside USA)
E: proteintech@ptglab.com
W: ptglab.com

This product is exclusively available under Proteintech Group brand and is not available to purchase from any other manufacturer.

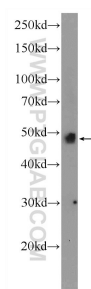
Selected Validation Data



Various lysates were subjected to SDS PAGE followed by western blot with 12492-1-AP (BMP4 antibody) at dilution of 1:300 incubated at room temperature for 1.5 hours.



Immunohistochemical analysis of paraffin-embedded human prostate hyperplasia using 12492-1-AP (BMP4 antibody) at dilution of 1:50 (under 10x lens).



rat heart tissue were subjected to SDS PAGE followed by western blot with 12492-1-AP (BMP4 Antibody) at dilution of 1:600 incubated at room temperature for 1.5 hours.