

For Research Use Only

# TRUB1 Polyclonal antibody

Catalog Number: 12520-1-AP

3 Publications



## Basic Information

### Catalog Number:

12520-1-AP

### Size:

150ul, Concentration: 600 ug/ml by Nanodrop;

### Source:

Rabbit

### Isotype:

IgG

### Immunogen Catalog Number:

AG3213

### GenBank Accession Number:

BC030601

### GeneID (NCBI):

142940

### UNIPROT ID:

Q8WWH5

### Full Name:

TruB pseudouridine (psi) synthase homolog 1 (E. coli)

### Calculated MW:

349 aa, 37 kDa

### Observed MW:

37 kDa

### Purification Method:

Antigen affinity purification

### Recommended Dilutions:

WB 1:1000-1:4000

IP 0.5-4.0 ug for 1.0-3.0 mg of total protein lysate

IHC 1:50-1:500

## Applications

### Tested Applications:

WB, IP, IHC, ELISA

### Cited Applications:

WB, IF

### Species Specificity:

human, mouse

### Cited Species:

human

### Positive Controls:

WB : HEK-293T cells, HepG2 cells

IP : mouse liver tissue,

IHC : human kidney tissue, mouse testis tissue

**Note-IHC: suggested antigen retrieval with TE buffer pH 9.0; (\*) Alternatively, antigen retrieval may be performed with citrate buffer pH 6.0**

## Background Information

TRUB1 gene encodes a 349-amino acid product, with a VFAVHKPKGPTSA box in positions 71-83 corresponding to motif I of the TruB family (probably involved in conserving protein structure). This protein may be responsible for synthesis of pseudouridine from uracil in transfer RNAs.

## Notable Publications

Author	Pubmed ID	Journal	Application
Haiqi Xu	39349603	Nat Methods	WB
Xin Fang	38709875	Nucleic Acids Res	WB
Oleksandra Fanari	38585714	bioRxiv	IF

## Storage

### Storage:

Store at -20°C. Stable for one year after shipment.

### Storage Buffer:

PBS with 0.02% sodium azide and 50% glycerol pH 7.3.

Aliquoting is unnecessary for -20°C storage

\*\*\* 20ul sizes contain 0.1% BSA

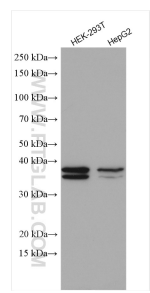
For technical support and original validation data for this product please contact:

T: 1 (888) 4PTGLAB (1-888-478-4522) (toll free in USA), or 1(312) 455-8498 (outside USA)

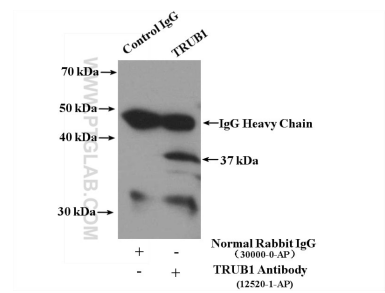
E: [proteintech@ptglab.com](mailto:proteintech@ptglab.com)  
W: [ptglab.com](http://ptglab.com)

This product is exclusively available under Proteintech Group brand and is not available to purchase from any other manufacturer.

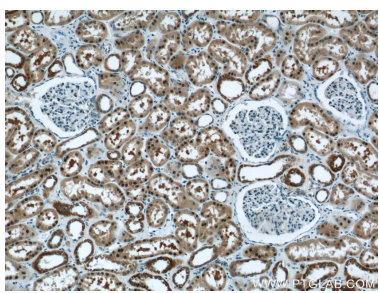
Selected Validation Data



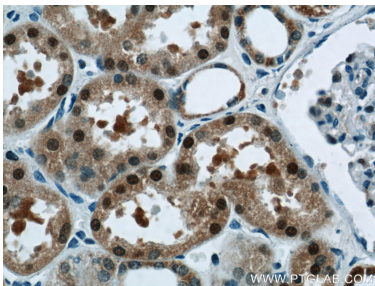
Various lysates were subjected to SDS PAGE followed by western blot with 12520-1-AP (TRUB1 antibody) at dilution of 1:2000 incubated at room temperature for 1.5 hours.



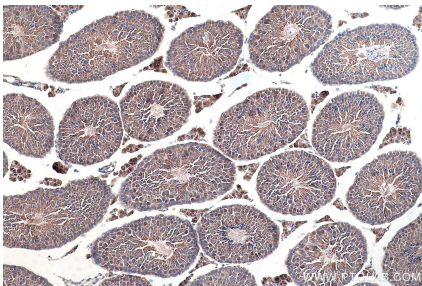
IP result of anti-TRUB1 (IP:12520-1-AP, 4ug; Detection:12520-1-AP 1:300) with mouse liver tissue lysate 6400ug.



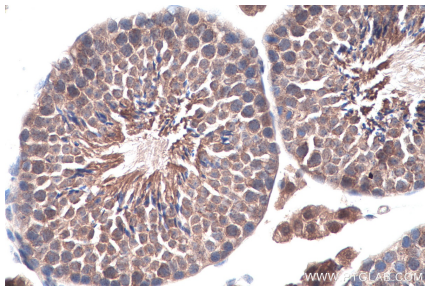
Immunohistochemical analysis of paraffin-embedded human kidney tissue slide using 12520-1-AP (TRUB1 Antibody) at dilution of 1:50 (under 10x lens).



Immunohistochemical analysis of paraffin-embedded human kidney tissue slide using 12520-1-AP (TRUB1 Antibody) at dilution of 1:50 (under 40x lens).



Immunohistochemical analysis of paraffin-embedded mouse testis tissue slide using 12520-1-AP (TRUB1 antibody) at dilution of 1:500 (under 10x lens). Heat mediated antigen retrieval with Tris-EDTA buffer (pH 9.0).



Immunohistochemical analysis of paraffin-embedded mouse testis tissue slide using 12520-1-AP (TRUB1 antibody) at dilution of 1:500 (under 40x lens). Heat mediated antigen retrieval with Tris-EDTA buffer (pH 9.0).