

For Research Use Only

SULT1E1 Polyclonal antibody

Catalog Number: 12522-1-AP

Featured Product

19 Publications



Basic Information

Catalog Number:

12522-1-AP

Size:

150ul, Concentration: 900 ug/ml by Nanodrop and 380 ug/ml by Bradford method using BSA as the standard;

Source:

Rabbit

Isotype:

IgG

Immunogen Catalog Number:

AG3216

GenBank Accession Number:

BC027956

GeneID (NCBI):

6783

UNIPROT ID:

P49888

Full Name:

sulfotransferase family 1E, estrogen-preferring, member 1

Calculated MW:

294 aa, 35 kDa

Observed MW:

32-35 kDa

Purification Method:

Antigen affinity purification

Recommended Dilutions:

WB 1:500-1:1000

IP 0.5-4.0 ug for 1.0-3.0 mg of total protein lysate

IHC 1:50-1:500

Applications

Tested Applications:

WB, IP, IHC, ELISA

Cited Applications:

WB, IHC, IF

Species Specificity:

human, mouse, rat

Cited Species:

human, mouse, rat

Note-IHC: suggested antigen retrieval with TE buffer pH 9.0; (*) Alternatively, antigen retrieval may be performed with citrate buffer pH 6.0

Positive Controls:

WB: human lung tissue, human adrenal gland tissue, human kidney tissue, human liver tissue, mouse kidney tissue

IP: mouse liver tissue,

IHC: human breast cancer tissue,

Background Information

SULT1E1, also known as estrogen sulfotransferase, catalyzes the sulfation of endogenous estrogens as well as xenobiotic estrogen-like chemicals, converting them into the inactive form. SULT1E1 is a 33-35 kDa cytosolic protein that has been detected in human hepatic and nonhepatic tissues (17035602). SULT1E1 is expressed in breast and endometrial tissues, and some studies have investigated its implication in tumor development. Higher expression of SULT1E1 was observed in breast cancer tissues compared with normal breast tissues (22380844). This antibody detected a major band around 35 kD in lysates of mouse kidney, human liver and so on.

Notable Publications

Author	Pubmed ID	Journal	Application
Shuai Wang	28912067	Biochem Pharmacol	WB
Barbara Licznarska	27854074	Mol Cell Biochem	WB
Anne C Silva Barbosa	32424001	J Am Soc Nephrol	IHC

Storage

Storage:

Store at -20°C. Stable for one year after shipment.

Storage Buffer:

PBS with 0.02% sodium azide and 50% glycerol pH 7.3.

Aliquoting is unnecessary for -20°C storage

*** 20ul sizes contain 0.1% BSA

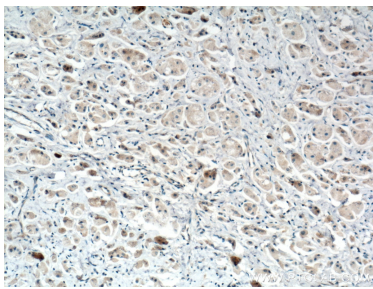
For technical support and original validation data for this product please contact:

T: 1 (888) 4PTGLAB (1-888-478-4522) (toll free in USA), or 1(312) 455-8498 (outside USA)

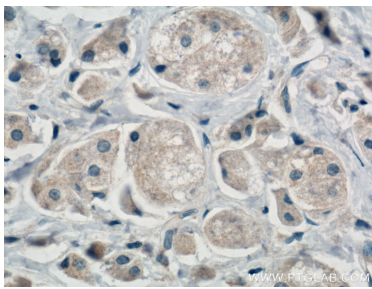
E: proteintech@ptglab.com
W: ptglab.com

This product is exclusively available under Proteintech Group brand and is not available to purchase from any other manufacturer.

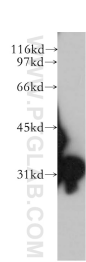
Selected Validation Data



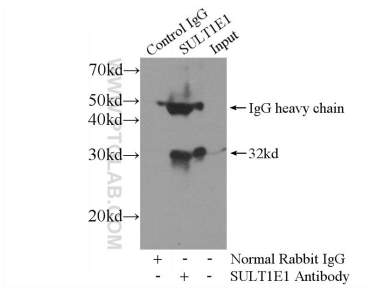
Immunohistochemical analysis of paraffin-embedded human breast cancer tissue slide using 12522-1-AP (SULT1E1 antibody) at dilution of 1:200 (under 10x lens. Heat mediated antigen retrieval with Tris-EDTA buffer (pH 9.0).



Immunohistochemical analysis of paraffin-embedded human breast cancer tissue slide using 12522-1-AP (SULT1E1 antibody) at dilution of 1:200 (under 40x lens. Heat mediated antigen retrieval with Tris-EDTA buffer (pH 9.0).



human lung tissue were subjected to SDS PAGE followed by western blot with 12522-1-AP (SULT1E1 antibody) at dilution of 1:500 incubated at room temperature for 1.5 hours.



IP result of anti-SULT1E1 (IP:12522-1-AP, 4ug; Detection:12522-1-AP 1:400) with mouse liver tissue lysate 4000ug.