

For Research Use Only

# PPIL2 Polyclonal antibody

Catalog Number: 12590-2-AP **1 Publications**



## Basic Information

<b>Catalog Number:</b> 12590-2-AP	<b>GenBank Accession Number:</b> BC028385	<b>Purification Method:</b> Antigen affinity purification
<b>Size:</b> 150ul , Concentration: 500 µg/ml by Nanodrop and 267 µg/ml by Bradford method using BSA as the standard;	<b>GeneID (NCBI):</b> 23759	<b>Recommended Dilutions:</b> WB 1:200-1:1000 IP 0.5-4.0 ug for IP and 1:200-1:1000 for WB
<b>Source:</b> Rabbit	<b>Full Name:</b> peptidylprolyl isomerase (cyclophilin)-like 2	
<b>Isotype:</b> IgG	<b>Calculated MW:</b> 520 aa, 59 kDa	
<b>Immunogen Catalog Number:</b> AG3296	<b>Observed MW:</b> 59 kDa	

## Applications

<b>Tested Applications:</b> IP, WB, ELISA	<b>Positive Controls:</b> WB : human kidney tissue, HEK-293 cells, mouse kidney tissue IP : HEK-293 cells,
<b>Cited Applications:</b> WB	
<b>Species Specificity:</b> human, mouse, rat	
<b>Cited Species:</b> rat	

## Background Information

### Notable Publications

Author	Pubmed ID	Journal	Application
Yan Xu	34124197	Front Cardiovasc Med	WB

## Storage

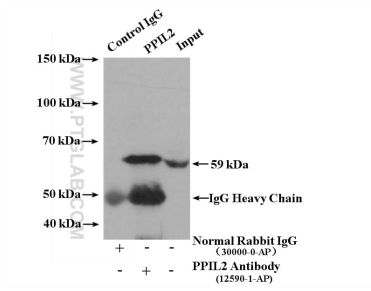
**Storage:**  
Store at -20°C. Stable for one year after shipment.  
**Storage Buffer:**  
PBS with 0.02% sodium azide and 50% glycerol pH 7.3.  
Aliquoting is unnecessary for -20°C storage

**\*\*\* 20ul sizes contain 0.1% BSA**

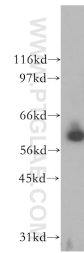
For technical support and original validation data for this product please contact:  
T: 1 (888) 4PTGLAB (1-888-478-4522) (toll free in USA), or 1(312) 455-8498 (outside USA)  
E: proteintech@ptglab.com  
W: ptglab.com

**This product is exclusively available under Proteintech Group brand and is not available to purchase from any other manufacturer.**

## Selected Validation Data



IP result of anti-PPIL2 (IP:12590-2-AP, 4ug;  
Detection:12590-2-AP 1:300) with HEK-293 cells  
lysate 2600 ug.



human kidney tissue were subjected to SDS PAGE  
followed by western blot with 12590-2-AP (PPIL2  
antibody) at dilution of 1:400 incubated at room  
temperature for 1.5 hours.