

For Research Use Only

CPB1 Polyclonal antibody

Catalog Number: 12600-1-AP

3 Publications



Basic Information

Catalog Number:

12600-1-AP

Size:

150ul, Concentration: 400 ug/ml by Bradford method using BSA as the standard;

Source:

Rabbit

Isotype:

IgG

Immunogen Catalog Number:

AG3243

GenBank Accession Number:

BC015338

GeneID (NCBI):

1360

UNIPROT ID:

P15086

Full Name:

carboxypeptidase B1 (tissue)

Calculated MW:

417 aa, 47 kDa

Observed MW:

47 kDa

Purification Method:

Antigen affinity purification

Recommended Dilutions:

WB 1:500-1:2000

IHC 1:50-1:500

Applications

Tested Applications:

WB, IHC, ELISA

Cited Applications:

WB, IHC

Species Specificity:

human, mouse, rat

Cited Species:

human, rat

Note-IHC: suggested antigen retrieval with TE buffer pH 9.0; (*) Alternatively, antigen retrieval may be performed with citrate buffer pH 6.0

Positive Controls:

WB : mouse pancreas tissue, rat pancreas tissue

IHC : human pancreas tissue, human kidney tissue, human pancreas cancer tissue

Background Information

PASP(pancreas-specific protein) is also named as CPB1, CPB, PCPB and belongs to the peptidase M14 family. This protein modulates the plasminogen system both in the matrix and on the cell surface, thus leading to the inhibition of endothelial cell movement and tube formation. It is initially described as a pancreatic metallocarboxypeptidase and is a marker for acute pancreatitis(PMID:19717511). The deduced 416-amino acid preproenzyme has a 15-amino acid signal peptide and a 95-amino acid activation peptide.

Notable Publications

Author	Pubmed ID	Journal	Application
Xiaohua Li	30649603	Arch Gynecol Obstet	WB
Charu Kothari	33917306	Cancers (Basel)	IHC
Yang Song	29631213	Transl Oncol	WB,IHC

Storage

Storage:

Store at -20°C. Stable for one year after shipment.

Storage Buffer:

PBS with 0.02% sodium azide and 50% glycerol pH 7.3.

Aliquoting is unnecessary for -20°C storage

*** 20ul sizes contain 0.1% BSA

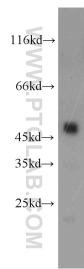
For technical support and original validation data for this product please contact:

T: 1 (888) 4PTGLAB (1-888-478-4522) (toll free in USA), or 1(312) 455-8498 (outside USA)

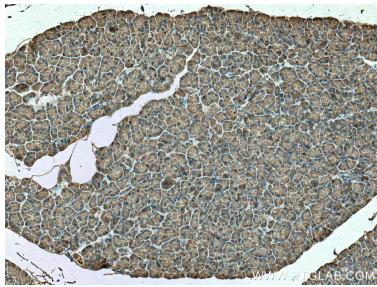
E: proteintech@ptglab.com
W: ptglab.com

This product is exclusively available under Proteintech Group brand and is not available to purchase from any other manufacturer.

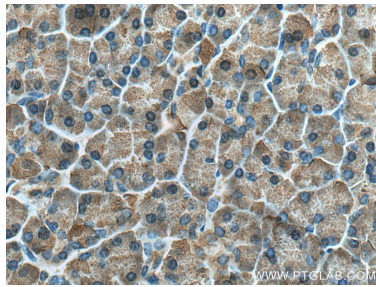
Selected Validation Data



mouse pancreas tissue were subjected to SDS PAGE followed by western blot with 12600-1-AP (CPB1 antibody) at dilution of 1:1000 incubated at room temperature for 1.5 hours.



Immunohistochemical analysis of paraffin-embedded human pancreas tissue slide using 12600-1-AP (CPB1 antibody) at dilution of 1:200 (under 10x lens). Heat mediated antigen retrieval with Tris-EDTA buffer (pH 9.0).



Immunohistochemical analysis of paraffin-embedded human pancreas tissue slide using 12600-1-AP (CPB1 antibody) at dilution of 1:200 (under 40x lens). Heat mediated antigen retrieval with Tris-EDTA buffer (pH 9.0).