

For Research Use Only

GCLC Polyclonal antibody

Catalog Number: 12601-1-AP

Featured Product

131 Publications



Basic Information

Catalog Number:

12601-1-AP

Size:

150ul, Concentration: 600 ug/ml by Nanodrop;

Source:

Rabbit

Isotype:

IgG

Immunogen Catalog Number:

AG3252

GenBank Accession Number:

BC022487

GeneID (NCBI):

2729

UNIPROT ID:

P48506

Full Name:

glutamate-cysteine ligase, catalytic subunit

Calculated MW:

637 aa, 73 kDa

Observed MW:

73 kDa

Purification Method:

Antigen affinity purification

Recommended Dilutions:

WB 1:5000-1:50000

IP 0.5-4.0 ug for 1.0-3.0 mg of total protein lysate

IHC 1:50-1:500

Applications

Tested Applications:

WB, IHC, IP, ELISA

Cited Applications:

WB, IHC, IF, IP

Species Specificity:

human, mouse, rat

Cited Species:

human, mouse, rat, goat

Note-IHC: suggested antigen retrieval with TE buffer pH 9.0; (*) Alternatively, antigen retrieval may be performed with citrate buffer pH 6.0

Positive Controls:

WB : Daudi cells, HEK-293 cells, L02 cells, mouse kidney tissue, Jurkat cells, Raji cells, mouse lung tissue, rat lung tissue

IP : mouse kidney tissue,

IHC : human kidney tissue, human liver tissue

Background Information

GCLC (Glutamate--cysteine ligase catalytic subunit) belongs to the glutamate--cysteine ligase type 3 family. It is also named as GLCL, GLCLC. It is the first rate-limiting enzyme in glutathione (GSH) biosynthesis. GCLC gene may be associated with coronary endothelial vasomotor dysfunction and myocardial infarction (MI) (PMID:12598062). Defects in GCLC are the cause of hemolytic anemia (HAGGSD).

Notable Publications

Author	Pubmed ID	Journal	Application
Lu Wang	34555641	Int Immunopharmacol	WB
Ana Tomasovic	27645114	Matrix Biol	WB
Juan Chen	34577027	Molecules	WB

Storage

Storage:

Store at -20°C. Stable for one year after shipment.

Storage Buffer:

PBS with 0.02% sodium azide and 50% glycerol, pH7.3

Aliquoting is unnecessary for -20°C storage

*** 20ul sizes contain 0.1% BSA

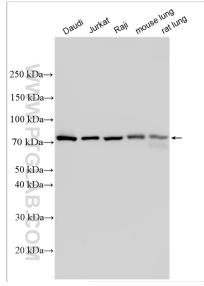
For technical support and original validation data for this product please contact:

T: 1 (888) 4PTGLAB (1-888-478-4522) (toll free in USA), or 1(312) 455-8498 (outside USA)

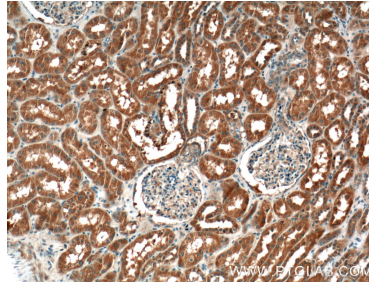
E: proteintech@ptglab.com
W: ptglab.com

This product is exclusively available under Proteintech Group brand and is not available to purchase from any other manufacturer.

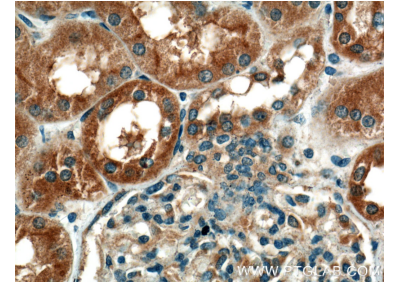
Selected Validation Data



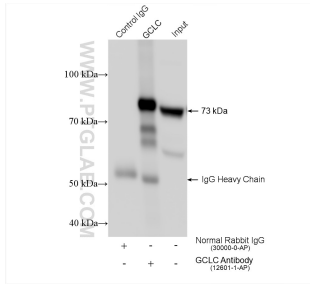
Various lysates were subjected to SDS PAGE followed by western blot with 12601-1-AP (GCLC antibody) at dilution of 1:15000 incubated at room temperature for 1.5 hours.



Immunohistochemical analysis of paraffin-embedded human kidney tissue slide using 12601-1-AP (GCLC Antibody) at dilution of 1:200 (under 10x lens).



Immunohistochemical analysis of paraffin-embedded human kidney tissue slide using 12601-1-AP (GCLC Antibody) at dilution of 1:200 (under 40x lens).



IP result of anti-GCLC (IP:12601-1-AP, 4ug;
Detection:12601-1-AP 1:5000) with mouse kidney
tissue lysate 2160 ug.