

For Research Use Only

GUCY1A3 Polyclonal antibody

Catalog Number: 12605-1-AP

10 Publications



Basic Information

Catalog Number:

12605-1-AP

Size:

150ul, Concentration: 300 ug/ml by Nanodrop and 200 ug/ml by Bradford method using BSA as the standard;

Source:

Rabbit

Isotype:

IgG

Immunogen Catalog Number:

AG3293

GenBank Accession Number:

BC028384

GeneID (NCBI):

2982

UNIPROT ID:

Q02108

Full Name:

guanylate cyclase 1, soluble, alpha 3

Calculated MW:

690 aa, 77 kDa

Observed MW:

77 kDa

Purification Method:

Antigen affinity purification

Recommended Dilutions:

WB 1:500-1:2000

IP 0.5-4.0 ug for 1.0-3.0 mg of total protein lysate

IHC 1:20-1:200

Applications

Tested Applications:

WB, IP, IHC, ELISA

Cited Applications:

WB, IHC, IF

Species Specificity:

human, mouse, rat

Cited Species:

human, mouse

Note-IHC: suggested antigen retrieval with TE buffer pH 9.0; (*) Alternatively, antigen retrieval may be performed with citrate buffer pH 6.0

Positive Controls:

WB: human brain tissue, human cerebellum tissue, human kidney tissue, mouse lung tissue

IP: mouse lung tissue,

IHC: human heart tissue,

Notable Publications

Author	Pubmed ID	Journal	Application
Andrea de la Fuente-Alonso	33976159	Nat Commun	WB
Catarina Rippe	28465505	Sci Rep	WB,IHC
Wu Yang	34089528	Hepatology	IF

Storage

Storage:

Store at -20°C. Stable for one year after shipment.

Storage Buffer:

PBS with 0.02% sodium azide and 50% glycerol pH 7.3.

Aliquoting is unnecessary for -20°C storage

*** 20ul sizes contain 0.1% BSA

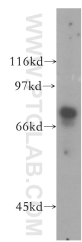
For technical support and original validation data for this product please contact:

T: 1 (888) 4PTGLAB (1-888-478-4522) (toll free in USA), or 1(312) 455-8498 (outside USA)

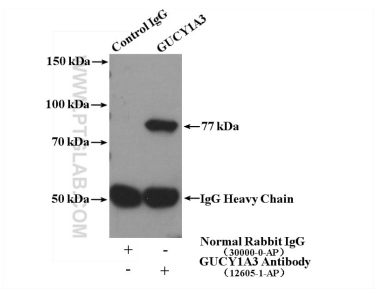
E: proteintech@ptglab.com
W: ptglab.com

This product is exclusively available under Proteintech Group brand and is not available to purchase from any other manufacturer.

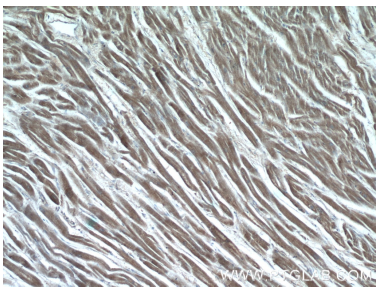
Selected Validation Data



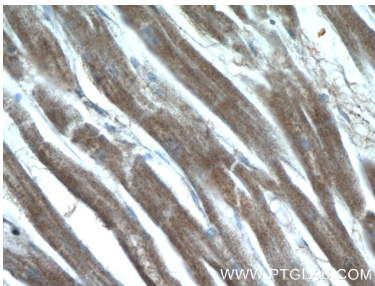
human brain tissue were subjected to SDS PAGE followed by western blot with 12605-1-AP (GUCY1A3 antibody) at dilution of 1:400 incubated at room temperature for 1.5 hours.



IP result of anti-GUCY1A3 (IP:12605-1-AP, 4ug; Detection:12605-1-AP 1:500) with mouse lung tissue lysate 3600ug.



Immunohistochemical analysis of paraffin-embedded human heart tissue slide using 12605-1-AP (GUCY1A3 Antibody) at dilution of 1:50 (under 10x lens).



Immunohistochemical analysis of paraffin-embedded human heart tissue slide using 12605-1-AP (GUCY1A3 Antibody) at dilution of 1:50 (under 40x lens).