

For Research Use Only

# PIGB Polyclonal antibody

Catalog Number: 12612-1-AP

1 Publications



## Basic Information

Catalog Number:

12612-1-AP

Size:

150ul, Concentration: 400 ug/ml by Nanodrop and 247 ug/ml by Bradford method using BSA as the standard;

Source:

Rabbit

Isotype:

IgG

Immunogen Catalog Number:

AG3244

GenBank Accession Number:

BC017711

GeneID (NCBI):

9488

UNIPROT ID:

Q92521

Full Name:

phosphatidylinositol glycan anchor biosynthesis, class B

Calculated MW:

65 kDa

Observed MW:

50-55 kDa

Purification Method:

Antigen affinity purification

Recommended Dilutions:

WB 1:500-1:3000

IHC 1:20-1:200

## Applications

Tested Applications:

WB, IHC, ELISA

Cited Applications:

WB

Species Specificity:

human, mouse, rat

Cited Species:

human

**Note-IHC: suggested antigen retrieval with TE buffer pH 9.0; (\*) Alternatively, antigen retrieval may be performed with citrate buffer pH 6.0**

Positive Controls:

WB : human liver tissue, human brain tissue, mouse testis tissue, Raji cells

IHC : human prostate cancer tissue,

## Notable Publications

Author	Pubmed ID	Journal	Application
Avila Hector H	21143195	Biochem J	WB

## Storage

Storage:

Store at -20°C. Stable for one year after shipment.

Storage Buffer:

PBS with 0.02% sodium azide and 50% glycerol pH 7.3.

Aliquoting is unnecessary for -20°C storage

\*\*\* 20ul sizes contain 0.1% BSA

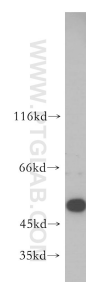
For technical support and original validation data for this product please contact:

T: 1 (888) 4PTGLAB (1-888-478-4522) (toll free in USA), or 1(312) 455-8498 (outside USA)

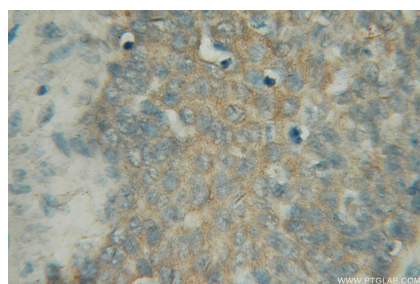
E: [proteintech@ptglab.com](mailto:proteintech@ptglab.com)  
W: [ptglab.com](http://ptglab.com)

This product is exclusively available under Proteintech Group brand and is not available to purchase from any other manufacturer.

## Selected Validation Data



human liver tissue were subjected to SDS PAGE followed by western blot with 12612-1-AP (PIGB antibody) at dilution of 1:800 incubated at room temperature for 1.5 hours.



Immunohistochemical analysis of paraffin-embedded human prostate cancer using 12612-1-AP (PIGB antibody) at dilution of 1:50 (under 10x lens).