

For Research Use Only

PPP2R1B Polyclonal antibody

Catalog Number: 12621-1-AP **3 Publications**



Basic Information

Catalog Number: 12621-1-AP	GenBank Accession Number: BC027596	Purification Method: Antigen affinity purification
Size: 150ul, Concentration: 800 µg/ml by Nanodrop and 333 µg/ml by Bradford method using BSA as the standard;	GeneID (NCBI): 5519	Recommended Dilutions: WB 1:1000-1:4000 IHC 1:50-1:500 IF 1:50-1:500
Source: Rabbit	UNIPROT ID: P30154	
Isotype: IgG	Full Name: protein phosphatase 2 (formerly 2A), regulatory subunit A, beta isoform	
Immunogen Catalog Number: AG3307	Calculated MW: 667 aa, 74 kDa	
	Observed MW: 60-74 kDa	

Applications

Tested Applications:

IF, IHC, WB, ELISA

Cited Applications:

WB, IHC, CoIP

Species Specificity:

human, rat, mouse

Cited Species:

human, mouse

Note-IHC: suggested antigen retrieval with TE buffer pH 9.0; (*) Alternatively, antigen retrieval may be performed with citrate buffer pH 6.0

Positive Controls:

WB: A2780 cells, human kidney tissue, mouse testis tissue, rat testis tissue, HeLa cells

IHC: human liver tissue,

IF: Caco-2 cells,

Notable Publications

Author	Pubmed ID	Journal	Application
Wen-Ting Hu	36305233	EMBO Rep	WB
Baoyu Chen	32903816	Front Cell Dev Biol	WB
Wei Liu	38429738	Cancer Cell Int	WB, IHC, CoIP

Storage

Storage:

Store at -20°C. Stable for one year after shipment.

Storage Buffer:

PBS with 0.02% sodium azide and 50% glycerol pH 7.3.

Aliquoting is unnecessary for -20°C storage

*** 20ul sizes contain 0.1% BSA

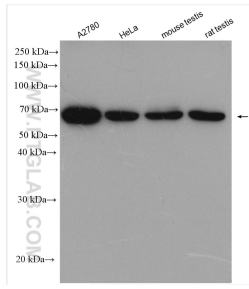
For technical support and original validation data for this product please contact:

T: 1 (888) 4PTGLAB (1-888-478-4522) (toll free in USA), or 1(312) 455-8498 (outside USA)

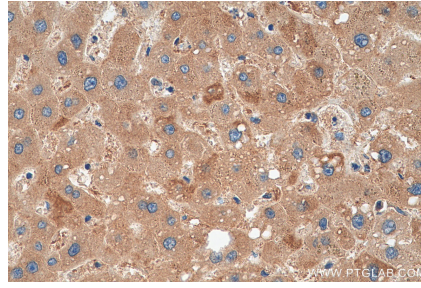
E: proteintech@ptglab.com
W: ptglab.com

This product is exclusively available under Proteintech Group brand and is not available to purchase from any other manufacturer.

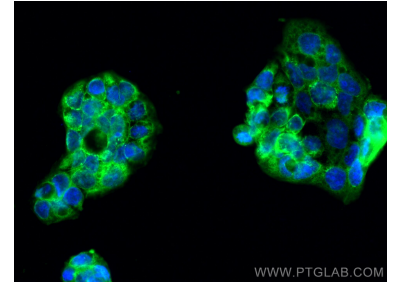
Selected Validation Data



Various lysates were subjected to SDS PAGE followed by western blot with 12621-1-AP (PPP2R1B antibody) at dilution of 1:2000 incubated at room temperature for 1.5 hours.



Immunohistochemical analysis of paraffin-embedded human liver tissue slide using 12621-1-AP (PPP2R1B antibody) at dilution of 1:200 (under 40x lens). Heat mediated antigen retrieval with Tris-EDTA buffer (pH 9.0).



Immunofluorescent analysis of (-20°C Ethanol) fixed Caco-2 cells using PPP2R1B antibody (12621-1-AP) at dilution of 1:200 and CoraLite®488-Conjugated AffiniPure Goat Anti-Rabbit IgG(H+L).