

For Research Use Only

golgin 97 Polyclonal antibody

Catalog Number: 12640-1-AP **16 Publications**



Basic Information

Catalog Number: 12640-1-AP	GenBank Accession Number: BC032853	Purification Method: Antigen affinity purification
Size: 150ul , Concentration: 200 µg/ml by Nanodrop and 133 µg/ml by Bradford method using BSA as the standard;	GeneID (NCBI): 2800	Recommended Dilutions: WB 1:2000-1:16000 IF 1:500-1:2000
Source: Rabbit	Full Name: golgi autoantigen, golgin subfamily a, 1	
Isotype: IgG	Calculated MW: 767 aa, 88 kDa	
Immunogen Catalog Number: AG3335	Observed MW: 97 kDa	

Applications

Tested Applications: FC, IF, WB, ELISA	Positive Controls:
Cited Applications: IF, IHC, IP, WB	WB : HEK-293 cells, SMMC-7721 cells, HeLa cells, HepG2 cells
Species Specificity: human	IF : HeLa cells,
Cited Species: human, mouse, monkey	

Background Information

Golgin subfamily A member 1 is a protein that in humans is encoded by the GOLGA1 gene. GOLGA1 has been shown to interact with ARL1. GOLGA1 is associated with Sjogren's syndrome. The MW of this protein is 97 kDa, and Catalog#12640-1-AP specially recognises the 97 kDa protein. IF result shows strong Golgi staining.

Notable Publications

Author	Pubmed ID	Journal	Application
Mengyue You	36252341	Redox Biol	IF
Chengfeng Merriman	31591269	J Biol Chem	WB
Rachel E Turn	34818063	Mol Biol Cell	IHC

Storage

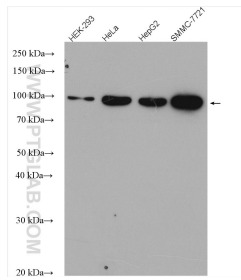
Storage:
Store at -20°C. Stable for one year after shipment.
Storage Buffer:
PBS with 0.02% sodium azide and 50% glycerol pH 7.3.
Aliquoting is unnecessary for -20°C storage

*** 20ul sizes contain 0.1% BSA

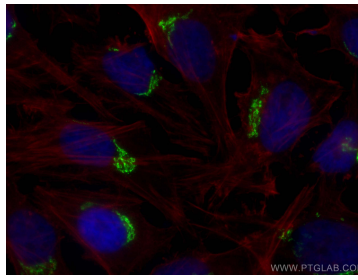
For technical support and original validation data for this product please contact:
T: 1 (888) 4PTGLAB (1-888-478-4522) (toll free in USA), or 1(312) 455-8498 (outside USA)
E: proteintech@ptglab.com
W: ptglab.com

This product is exclusively available under Proteintech Group brand and is not available to purchase from any other manufacturer.

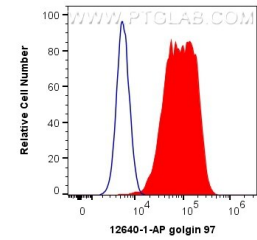
Selected Validation Data



Various lysates were subjected to SDS PAGE followed by western blot with 12640-1-AP (golgin 97 antibody) at dilution of 1:8000 incubated at room temperature for 1.5 hours.



Immunofluorescent analysis of (4% PFA) fixed HeLa cells using golgin 97 antibody (12640-1-AP) at dilution of 1:1000 and CoraLite®488-Conjugated AffiniPure Goat Anti-Rabbit IgG(H+L), CL594-phalloidin (red).



1X10⁶ HeLa cells were intracellularly stained with 0.4 ug Anti-Human golgin 97 (12640-1-AP) and CoraLite®488-Conjugated AffiniPure Goat Anti-Rabbit IgG(H+L) at dilution 1:1000 (red), or 0.4 ug Isotype Control. Cells were fixed with 4% PFA and permeabilized with Flow Cytometry Perm Buffer (PF00011-C).