

For Research Use Only

SHC4 Polyclonal antibody

Catalog Number: 12641-1-AP

Featured Product

3 Publications



Basic Information

Catalog Number:

12641-1-AP

Size:

150ul, Concentration: 600 ug/ml by Nanodrop and 300 ug/ml by Bradford method using BSA as the standard;

Source:

Rabbit

Isotype:

IgG

Immunogen Catalog Number:

AG3336

GenBank Accession Number:

BC033907

GeneID (NCBI):

399694

UNIPROT ID:

Q6S5L8

Full Name:

SHC (Src homology 2 domain containing) family, member 4

Calculated MW:

630 aa, 69 kDa

Observed MW:

69 kDa

Purification Method:

Antigen affinity purification

Recommended Dilutions:

WB 1:500-1:3000

IHC 1:50-1:500

IF/ICC 1:200-1:800

Applications

Tested Applications:

WB, IHC, IF/ICC, ELISA

Cited Applications:

WB, IHC, ColP, IF

Species Specificity:

human, mouse, rat

Cited Species:

human, mouse

Note-IHC: suggested antigen retrieval with TE buffer pH 9.0; (*) Alternatively, antigen retrieval may be performed with citrate buffer pH 6.0

Positive Controls:

WB : SH-SY5Y cells, human brain tissue, HepG2 cells, human skeletal muscle tissue, mouse brain tissue, A375 cells, rat brain tissue

IHC : rat brain tissue, mouse brain tissue

IF/ICC : HepG2 cells, SH-SY5Y cells

Notable Publications

Author	Pubmed ID	Journal	Application
Liu Wanting W	23638386	PeerJ	IHC,IF
Zhiling Luo	31971563	Clin Sci (Lond)	WB
Wenjing Zhong	38052369	Cancer Lett	WB,IHC,IF,ColP

Storage

Storage:

Store at -20°C. Stable for one year after shipment.

Storage Buffer:

PBS with 0.02% sodium azide and 50% glycerol pH 7.3.

Aliquoting is unnecessary for -20°C storage

*** 20ul sizes contain 0.1% BSA

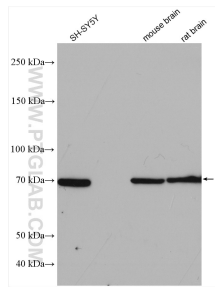
For technical support and original validation data for this product please contact:

T: 1 (888) 4PTGLAB (1-888-478-4522) (toll free in USA), or 1(312) 455-8498 (outside USA)

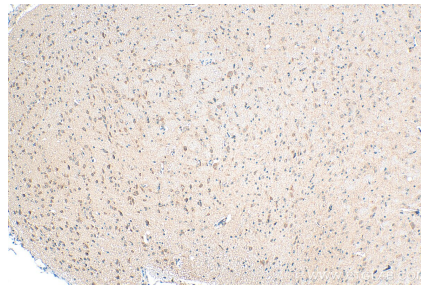
E: proteintech@ptglab.com
W: ptglab.com

This product is exclusively available under Proteintech Group brand and is not available to purchase from any other manufacturer.

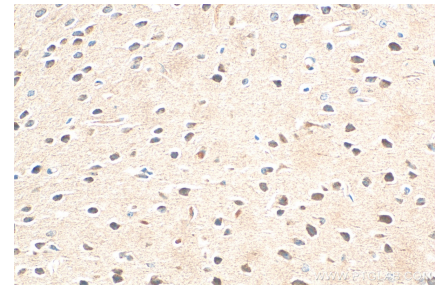
Selected Validation Data



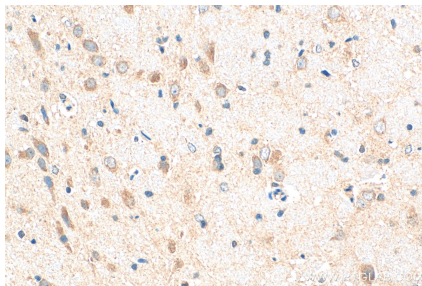
Various lysates were subjected to SDS PAGE followed by western blot with 12641-1-AP (SHC4 antibody) at dilution of 1:1500 incubated at room temperature for 1.5 hours.



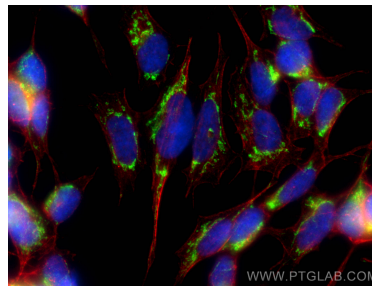
Immunohistochemical analysis of paraffin-embedded rat brain tissue slide using 12641-1-AP (SHC4 antibody) at dilution of 1:200 (under 10x lens). Heat mediated antigen retrieval with Tris-EDTA buffer (pH 9.0).



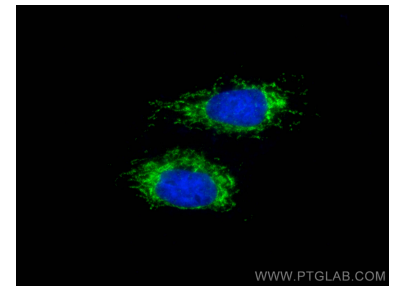
Immunohistochemical analysis of paraffin-embedded mouse brain tissue slide using 12641-1-AP (SHC4 antibody) at dilution of 1:200 (under 40x lens). Heat mediated antigen retrieval with Tris-EDTA buffer (pH 9.0).



Immunohistochemical analysis of paraffin-embedded rat brain tissue slide using 12641-1-AP (SHC4 antibody) at dilution of 1:200 (under 40x lens). Heat mediated antigen retrieval with Tris-EDTA buffer (pH 9.0).



Immunofluorescent analysis of (-20°C Ethanol) fixed SH-SY5Y cells using SHC4 antibody (12641-1-AP) at dilution of 1:400 and CoraLite®488-Conjugated Goat Anti-Rabbit IgG(H+L) (SA00013-2), CL594-Phalloidin (red).



Immunofluorescent analysis of (-20°C Ethanol) fixed HepG2 cells using SHC4 antibody (12641-1-AP) at dilution of 1:400 and CoraLite®488-Conjugated Goat Anti-Rabbit IgG(H+L) (SA00013-2).