

For Research Use Only

# WDR16 Polyclonal antibody

Catalog Number: 12644-1-AP



## Basic Information

**Catalog Number:**

12644-1-AP

**Size:**

150ul, Concentration: 200 ug/ml by Nanodrop and 167 ug/ml by Bradford method using BSA as the standard;

**Source:**

Rabbit

**Isotype:**

IgG

**Immunogen Catalog Number:**

AG3281

**GenBank Accession Number:**

BC025392

**GeneID (NCBI):**

146845

**UNIPROT ID:**

Q8N1V2

**Full Name:**

WD repeat domain 16

**Calculated MW:**

620 aa, 68 kDa

**Purification Method:**

Antigen affinity purification

**Recommended Dilutions:**

IHC 1:20-1:200

IF/ICC 1:50-1:500

## Applications

**Tested Applications:**

IHC, IF/ICC, ELISA

**Species Specificity:**

human

**Note-IHC: suggested antigen retrieval with *TE buffer pH 9.0*; (\*) Alternatively, antigen retrieval may be performed with *citrate buffer pH 6.0***

**Positive Controls:**

IHC : human testis tissue, human liver cancer tissue

IF/ICC : HeLa cells,

## Storage

**Storage:**

Store at -20°C. Stable for one year after shipment.

**Storage Buffer:**

PBS with 0.02% sodium azide and 50% glycerol pH 7.3.

Aliquoting is unnecessary for -20°C storage

**\*\*\* 20ul sizes contain 0.1%BSA**

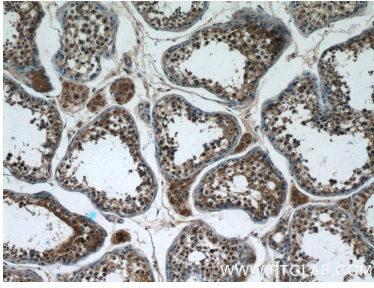
For technical support and original validation data for this product please contact:

T: 1 (888) 4PTGLAB (1-888-478-4522) (toll free in USA), or 1(312) 455-8498 (outside USA)

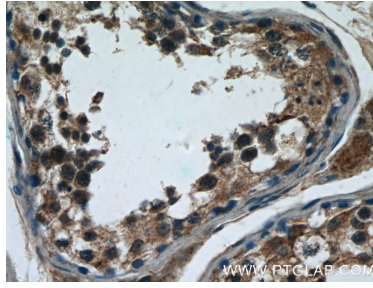
E: [proteintech@ptglab.com](mailto:proteintech@ptglab.com)  
W: [ptglab.com](http://ptglab.com)

This product is exclusively available under Proteintech Group brand and is not available to purchase from any other manufacturer.

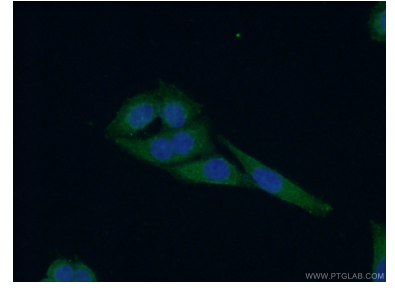
## Selected Validation Data



Immunohistochemical analysis of paraffin-embedded human testis tissue slide using 12644-1-AP (WDR16 Antibody) at dilution of 1:50 (under 10x lens).



Immunohistochemical analysis of paraffin-embedded human testis tissue slide using 12644-1-AP (WDR16 Antibody) at dilution of 1:50 (under 40x lens).



Immunofluorescent analysis of (-20°C Ethanol) fixed HeLa cells using 12644-1-AP (WDR16 antibody) at dilution of 1:50 and Alexa Fluor 488-conjugated AffiniPure Goat Anti-Rabbit IgG(H+L).