

For Research Use Only

PDE9A Polyclonal antibody

Catalog Number: 12648-1-AP **1 Publications**



Basic Information

Catalog Number: 12648-1-AP	GenBank Accession Number: BC009047	Purification Method: Antigen affinity purification
Size: 150ul , Concentration: 1000 µg/ml by Nanodrop and 467 µg/ml by Bradford method using BSA as the standard;	GeneID (NCBI): 5152	Recommended Dilutions: IHC 1:100-1:400 IF 1:50-1:500
Source: Rabbit	Full Name: phosphodiesterase 9A	
Isotype: IgG	Calculated MW: 68 kDa	
Immunogen Catalog Number: AG3372	Observed MW: 50 kDa	

Applications

Tested Applications: IF, IHC, ELISA	Positive Controls: IHC : human prostate cancer tissue, IF : A549 cells,
Species Specificity: human, mouse	
Cited Species: human, rat	
Note-IHC: suggested antigen retrieval with TE buffer pH 9.0; (*) Alternatively, antigen retrieval may be performed with citrate buffer pH 6.0	

Background Information

Cyclic nucleotide phosphodiesterases (PDEs), which hydrolyze the intracellular second messengers cAMP and cGMP to their corresponding monophosphates, play an important role in signal transduction by regulating the intracellular concentration of cyclic nucleotides. PDE9A plays a role in signal transduction by regulating the intracellular concentration of these cyclic nucleotides. Multiple transcript variants encoding several different isoforms have been found for this gene. This protein has 16 isoforms with the MW between 44 kDa and 65 kDa.

Notable Publications

Author	Pubmed ID	Journal	Application
Jia-Yi You	35490726	Eur J Pharmacol	

Storage

Storage:
Store at -20°C. Stable for one year after shipment.
Storage Buffer:
PBS with 0.02% sodium azide and 50% glycerol pH 7.3.
Aliquoting is unnecessary for -20°C storage

*** 20ul sizes contain 0.1% BSA

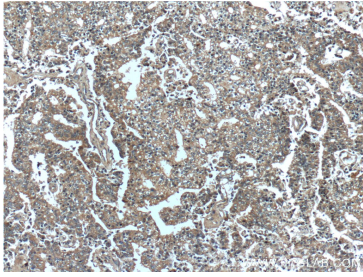
For technical support and original validation data for this product please contact:

T: 1 (888) 4PTGLAB (1-888-478-4522) (toll free in USA), or 1(312) 455-8498 (outside USA)

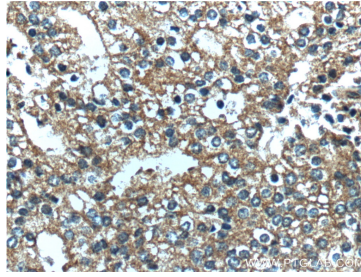
E: proteintech@ptglab.com
W: ptglab.com

This product is exclusively available under Proteintech Group brand and is not available to purchase from any other manufacturer.

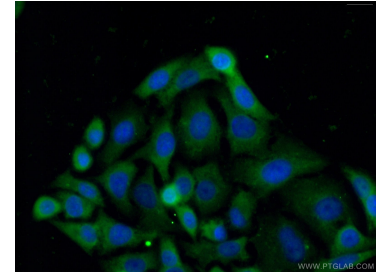
Selected Validation Data



Immunohistochemical analysis of paraffin-embedded human prostate cancer tissue slide using 12648-1-AP (PDE9A Antibody) at dilution of 1:200 (under 10x lens).



Immunohistochemical analysis of paraffin-embedded human prostate cancer tissue slide using 12648-1-AP (PDE9A Antibody) at dilution of 1:200 (under 40x lens).



Immunofluorescent analysis of (-20°C Ethanol) fixed A549 cells using 12648-1-AP (PDE9A antibody) at dilution of 1:50 and Alexa Fluor 488-conjugated AffiniPure Goat Anti-Rabbit IgG(H+L).