

For Research Use Only

RHPN2 Polyclonal antibody

Catalog Number: 12671-1-AP

Featured Product

3 Publications



Basic Information

Catalog Number: 12671-1-AP	GenBank Accession Number: BC036447	Purification Method: Antigen affinity purification
Size: 150ul, Concentration: 500 µg/ml by Nanodrop and 200 µg/ml by Bradford method using BSA as the standard;	GeneID (NCBI): 85415	Recommended Dilutions: WB 1:500-1:1000 IHC 1:50-1:500 IF 1:20-1:200
Source: Rabbit	Full Name: rhopilin, Rho GTPase binding protein 2	
Isotype: IgG	Calculated MW: 686 aa, 77 kDa	
Immunogen Catalog Number: AG3353	Observed MW: 77 kDa	

Applications

Tested Applications: IF, IHC, WB, ELISA	Positive Controls: WB: COLO 320 cells, HepG2 cells
Cited Applications: IF, WB	IHC: human colon tissue, human stomach tissue
Species Specificity: human, mouse, rat	IF: HepG2 cells,
Cited Species: human, mouse	

Note-IHC: suggested antigen retrieval with TE buffer pH 9.0; (*) Alternatively, antigen retrieval may be performed with citrate buffer pH 6.0

Background Information

RHPN2 binds specifically to GTP-Rho. It may function in a Rho pathway to limit stress fiber formation and/or increase the turnover of F-actin structures in the absence of high levels of RhoA activity. The MW of this protein is 77 kDa, and this antibody specially recognises the 77 kDa protein.

Notable Publications

Author	Pubmed ID	Journal	Application
Junning Yang	27460990	Sci Signal	
Jian Zhang	36536496	J Biochem Mol Toxicol	WB
Limei Yan	34382920	Cell Cycle	WB,IF

Storage

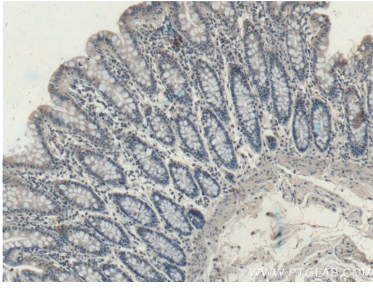
Storage:
Store at -20°C. Stable for one year after shipment.
Storage Buffer:
PBS with 0.02% sodium azide and 50% glycerol pH 7.3.
Aliquoting is unnecessary for -20°C storage

*** 20ul sizes contain 0.1% BSA

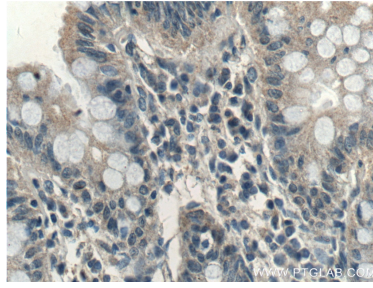
For technical support and original validation data for this product please contact:
T: 1 (888) 4PTGLAB (1-888-478-4522) (toll free in USA), or 1(312) 455-8498 (outside USA)
E: proteintech@ptglab.com
W: ptglab.com

This product is exclusively available under Proteintech Group brand and is not available to purchase from any other manufacturer.

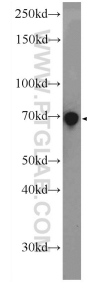
Selected Validation Data



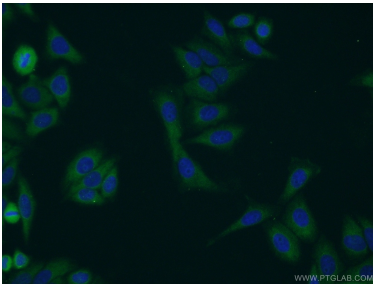
Immunohistochemical analysis of paraffin-embedded human colon tissue slide using 12671-1-AP (RHPN2 antibody) at dilution of 1:200 (under 10x lens).



Immunohistochemical analysis of paraffin-embedded human colon tissue slide using 12671-1-AP (RHPN2 antibody) at dilution of 1:200 (under 40x lens).



COLO 320 cells were subjected to SDS PAGE followed by western blot with 12671-1-AP (RHPN2 Antibody) at dilution of 1:600 incubated at room temperature for 1.5 hours.



Immunofluorescent analysis of HepG2 cells using 12671-1-AP (RHPN2 antibody) at dilution of 1:50 and Alexa Fluor 488-conjugated AffiniPure Goat Anti-Rabbit IgG(H+L).