

For Research Use Only

SHCBP1 Polyclonal antibody

Catalog Number: 12672-1-AP

Featured Product

16 Publications



Basic Information

Catalog Number:

12672-1-AP

Size:

150ul, Concentration: 450 ug/ml by Nanodrop and 373 ug/ml by Bradford method using BSA as the standard;

Source:

Rabbit

Isotype:

IgG

Immunogen Catalog Number:

AG3355

GenBank Accession Number:

BC030699

GeneID (NCBI):

79801

UNIPROT ID:

Q8NEM2

Full Name:

SHC SH2-domain binding protein 1

Calculated MW:

672 aa, 76 kDa

Observed MW:

75-85 kDa

Purification Method:

Antigen affinity purification

Recommended Dilutions:

WB 1:2000-1:10000

IP 0.5-4.0 ug for 1.0-3.0 mg of total protein lysate

IHC 1:50-1:500

Applications

Tested Applications:

WB, IP, IHC, ELISA

Cited Applications:

WB, IHC, IF, IP, CoIP

Species Specificity:

human, mouse

Cited Species:

human, mouse, canine

Note-IHC: suggested antigen retrieval with TE buffer pH 9.0; (*) Alternatively, antigen retrieval may be performed with citrate buffer pH 6.0

Positive Controls:

WB: HeLa cells, Jurkat cells, Sp2/0 cells, Neuro-2a cells, HepG2 cells, mouse thymus tissue

IP: Jurkat cells,

IHC: human liver cancer tissue, human tonsillitis tissue, human testis tissue

Background Information

SHCBP1 was initially identified as a potential gene associated with cell proliferation in fibroblasts. SHCBP1 exerts a crucial physiological function in normal tissue development. Chen et al. showed that SHCBP1 is an essential component of FGF signaling in neural progenitor cells. SHCBP1 is also upregulated during T cell proliferation and regulates CD4+ T cell effector function in vivo. Recently, SHCBP1 was shown to be closely associated with cancer development.

Notable Publications

Author	Pubmed ID	Journal	Application
Hongzhao Lu	33064958	Cancer Biol Ther	WB
Changliang Peng	29020987	J Exp Clin Cancer Res	IF, IHC, WB
Miao Mo	33163262	Am J Cancer Res	WB, IHC

Storage

Storage:

Store at -20°C. Stable for one year after shipment.

Storage Buffer:

PBS with 0.02% sodium azide and 50% glycerol pH 7.3.

Aliquoting is unnecessary for -20°C storage

*** 20ul sizes contain 0.1% BSA

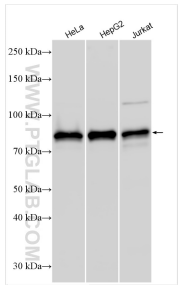
For technical support and original validation data for this product please contact:

T: 1 (888) 4PTGLAB (1-888-478-4522) (toll free in USA), or 1(312) 455-8498 (outside USA)

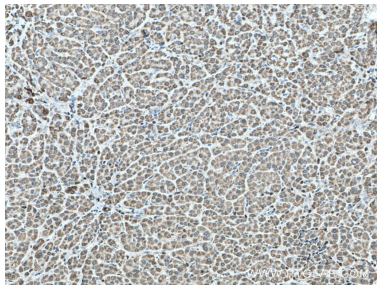
E: proteintech@ptglab.com
W: ptglab.com

This product is exclusively available under Proteintech Group brand and is not available to purchase from any other manufacturer.

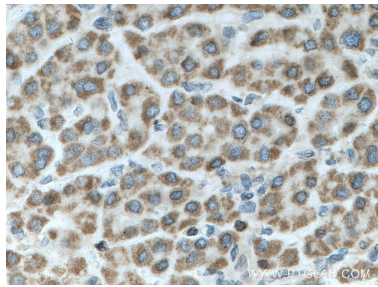
Selected Validation Data



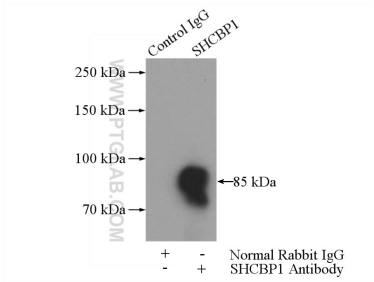
Various lysates were subjected to SDS PAGE followed by western blot with 12672-1-AP (SHCBP1 antibody) at dilution of 1:5000 incubated at room temperature for 1.5 hours.



Immunohistochemical analysis of paraffin-embedded human liver cancer tissue slide using 12672-1-AP (SHCBP1 antibody) at dilution of 1:200 (under 10x lens. Heat mediated antigen retrieval with Tris-EDTA buffer (pH 9.0).



Immunohistochemical analysis of paraffin-embedded human liver cancer tissue slide using 12672-1-AP (SHCBP1 antibody) at dilution of 1:200 (under 40x lens. Heat mediated antigen retrieval with Tris-EDTA buffer (pH 9.0).



IP result of anti-SHCBP1 (IP:12672-1-AP, 4ug; Detection:12672-1-AP 1:500) with Jurkat cells lysate 2400ug.