

For Research Use Only

PPP2R5A Polyclonal antibody

Catalog Number: 12675-2-AP

Featured Product

4 Publications



Basic Information

Catalog Number:

12675-2-AP

Size:

150ul, Concentration: 450 ug/ml by Nanodrop;

Source:

Rabbit

Isotype:

IgG

Immunogen Catalog Number:

AG3360

GenBank Accession Number:

BC022474

GeneID (NCBI):

5525

UNIPROT ID:

Q15172

Full Name:

protein phosphatase 2, regulatory subunit B', alpha isoform

Calculated MW:

486 aa, 56 kDa

Observed MW:

56 kDa

Purification Method:

Antigen affinity purification

Recommended Dilutions:

WB 1:300-1:1000

IP 0.5-4.0 ug for 1.0-3.0 mg of total protein lysate

IHC 1:50-1:500

IF/ICC 1:50-1:500

Applications

Tested Applications:

WB, IHC, IF/ICC, IP, ELISA

Cited Applications:

WB, IHC

Species Specificity:

human, mouse, rat

Cited Species:

human, mouse

Positive Controls:

WB: human ileum tissue, HeLa cells, human brain tissue, human heart tissue, human kidney tissue, human lung tissue, mouse heart tissue, rat heart tissue

IP: mouse brain tissue,

IHC: human pancreas cancer tissue,

IF/ICC: HepG2 cells,

Note-IHC: suggested antigen retrieval with TE buffer pH 9.0; (*) Alternatively, antigen retrieval may be performed with citrate buffer pH 6.0

Background Information

PPP2R5A (protein phosphatase 2, regulatory subunit B (B56), alpha isoform) is also named as PR61alpha and belongs to the phosphatase 2A regulatory subunit B56 family. B56 alpha subunit gene encodes a cytoplasmic phosphoprotein (PMID:7592815). The B regulatory subunit might modulate substrate selectivity and catalytic activity, and also might direct the localization of the catalytic enzyme to a particular subcellular compartment. This protein has 2 isoforms produced by alternative splicing with the molecular weight of 54 kDa and 50 kDa.

Notable Publications

Author	Pubmed ID	Journal	Application
Xiaoman Zhu	36096985	Cell Death Dis	WB
Siwen Yin	35154432	Oncol Lett	WB
Zehang Zhuang	28849187	Oncol Rep	WB, IHC

Storage

Storage:

Store at -20°C. Stable for one year after shipment.

Storage Buffer:

PBS with 0.02% sodium azide and 50% glycerol, pH7.3

Aliquoting is unnecessary for -20°C storage

*** 20ul sizes contain 0.1% BSA

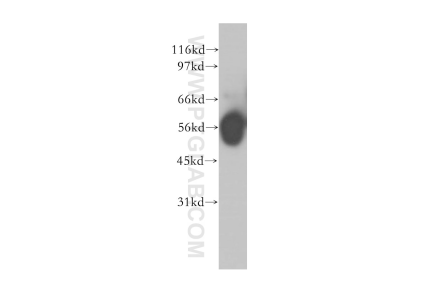
For technical support and original validation data for this product please contact:

T: 1 (888) 4PTGLAB (1-888-478-4522) (toll free in USA), or 1(312) 455-8498 (outside USA)

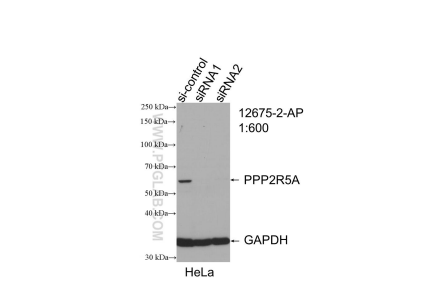
E: proteintech@ptglab.com
W: ptglab.com

This product is exclusively available under Proteintech Group brand and is not available to purchase from any other manufacturer.

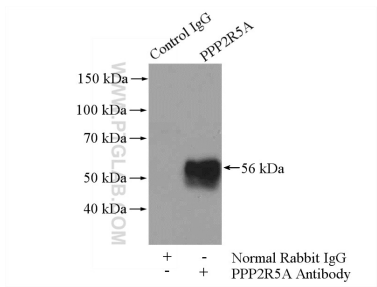
Selected Validation Data



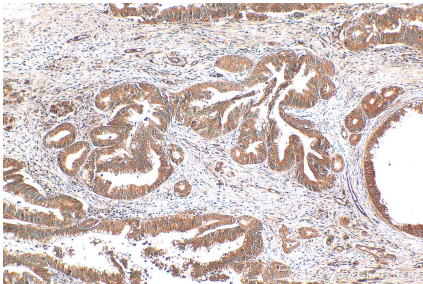
human ileum tissue were subjected to SDS PAGE followed by western blot with 12675-2-AP (PPP2R5A antibody) at dilution of 1:400 incubated at room temperature for 1.5 hours.



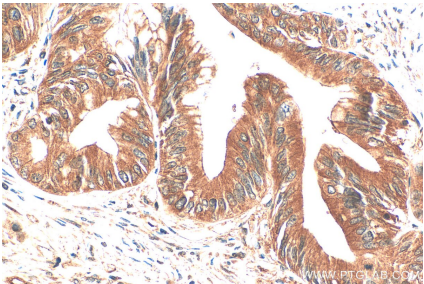
WB result of PPP2R5A antibody (12675-2-AP; 1:600; incubated at room temperature for 1.5 hours) with sh-Control and sh-PPP2R5A transfected HeLa cells.



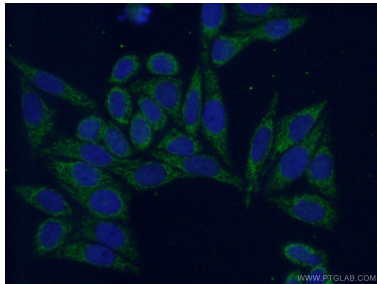
IP result of anti-PPP2R5A (IP:12675-2-AP, 4ug; Detection:12675-2-AP 1:500) with mouse brain tissue lysate 4000ug.



Immunohistochemical analysis of paraffin-embedded human pancreas cancer tissue slide using 12675-2-AP (PPP2R5A antibody) at dilution of 1:200 (under 10x lens). Heat mediated antigen retrieval with Tris-EDTA buffer (pH 9.0).



Immunohistochemical analysis of paraffin-embedded human pancreas cancer tissue slide using 12675-2-AP (PPP2R5A antibody) at dilution of 1:200 (under 40x lens). Heat mediated antigen retrieval with Tris-EDTA buffer (pH 9.0).



Immunofluorescent analysis of (4% PFA) fixed HepG2 cells using 12675-2-AP (PPP2R5A antibody) at dilution of 1:50 and Alexa Fluor 488-conjugated AffiniPure Goat Anti-Rabbit IgG(H+L).