

For Research Use Only

Kir5.1 Polyclonal antibody

Catalog Number: 12696-1-AP



Basic Information

Catalog Number:

12696-1-AP

Size:

150ul , Concentration: 200 ug/ml by Nanodrop and 160 ug/ml by Bradford method using BSA as the standard;

Source:

Rabbit

Isotype:

IgG

Immunogen Catalog Number:

AG3405

GenBank Accession Number:

BC033038

GeneID (NCBI):

3773

UNIPROT ID:

Q9NPI9

Full Name:

potassium inwardly-rectifying channel, subfamily J, member 16

Calculated MW:

418 aa, 48 kDa

Observed MW:

48 kDa

Purification Method:

Antigen affinity purification

Recommended Dilutions:

WB 1:500-1:2000

Applications

Tested Applications:

WB, ELISA

Species Specificity:

human, mouse, rat

Positive Controls:

WB : HEK-293 cells, human brain tissue

Background Information

Kir5.1, also known as KCNJ16, is a member of the inwardly rectifying potassium (Kir) channel family, which plays crucial roles in various physiological processes. These channels are characterized by their ability to allow potassium ions to flow more freely into the cell than out, a property that is vital for maintaining the resting membrane potential and regulating excitability in cardiac, neuronal, and smooth muscle tissues. Kir5.1 is specifically noted for its unique expression patterns and functional roles in several tissues, particularly in the kidney and brain.

Storage

Storage:

Store at -20°C. Stable for one year after shipment.

Storage Buffer:

PBS with 0.02% sodium azide and 50% glycerol pH 7.3.

Aliquoting is unnecessary for -20°C storage

*** 20ul sizes contain 0.1% BSA

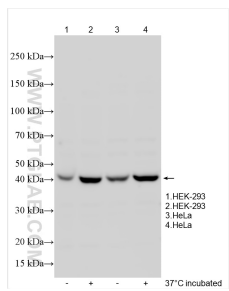
For technical support and original validation data for this product please contact:

T: 1 (888) 4PTGLAB (1-888-478-4522) (toll free in USA), or 1(312) 455-8498 (outside USA)

E: proteintech@ptglab.com
W: ptglab.com

This product is exclusively available under Proteintech Group brand and is not available to purchase from any other manufacturer.

Selected Validation Data



HEK-293 cells(heated at 100 ° C, heated at 37 °C) and HeLa cells(heated at 100 ° C, heated at 37 °C) lysates were subjected to SDS PAGE followed by western blot with 12696-1-AP (Kir5.1 antibody) at dilution of 1:1000 incubated at room temperature for 1.5 hours.