

For Research Use Only

KIFAP3 Polyclonal antibody

Catalog Number: 12700-1-AP

Featured Product

2 Publications



Basic Information

Catalog Number:

12700-1-AP

Size:

150ul, Concentration: 600 ug/ml by Nanodrop and 347 ug/ml by Bradford method using BSA as the standard;

Source:

Rabbit

Isotype:

IgG

Immunogen Catalog Number:

AG3394

GenBank Accession Number:

BC028679

GeneID (NCBI):

22920

UNIPROT ID:

Q92845

Full Name:

kinesin-associated protein 3

Calculated MW:

792 aa, 91 kDa

Observed MW:

91-100 kDa

Purification Method:

Antigen affinity purification

Recommended Dilutions:

WB 1:500-1:3000

IP 0.5-4.0 ug for 1.0-3.0 mg of total protein lysate

IHC 1:50-1:500

IF/ICC 1:50-1:500

Applications

Tested Applications:

WB, IHC, IF/ICC, IP, ELISA

Cited Applications:

WB

Species Specificity:

human, mouse, rat

Cited Species:

human

Note-IHC: suggested antigen retrieval with TE buffer pH 9.0; (*) Alternatively, antigen retrieval may be performed with citrate buffer pH 6.0

Positive Controls:

WB: human brain tissue, mouse testis tissue, mouse brain tissue, MCF-7 cells

IP: mouse testis tissue,

IHC: human ovary cancer tissue,

IF/ICC: HepG2 cells,

Background Information

KIFAP3, also known as KIF3AP or KAP3, is a novel KIF3A/3B-associated protein. It binds to the tail domain of KIF3A/3B and may play a role in regulating the binding of KIF3A/3B to cargoes. Recently it has been reported that mutation within the KIFAP3 gene is associated with decreased KIFAP3 expression and increased survival in sporadic ALS, which makes it a potential target for ALS therapy. KIFAP3 has also been identified as the target of mir-130a.

Notable Publications

Author	Pubmed ID	Journal	Application
Christopher Noyes	36653474	Commun Biol	WB
G?ken Joop J	22323518	Nucleic Acids Res	WB

Storage

Storage:

Store at -20°C. Stable for one year after shipment.

Storage Buffer:

PBS with 0.02% sodium azide and 50% glycerol pH 7.3.

Aliquoting is unnecessary for -20°C storage

*** 20ul sizes contain 0.1% BSA

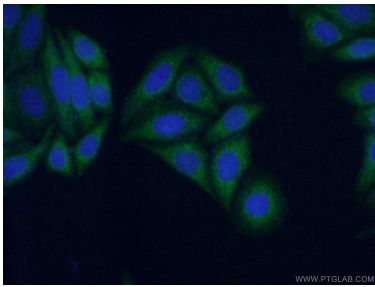
For technical support and original validation data for this product please contact:

T: 1 (888) 4PTGLAB (1-888-478-4522) (toll free in USA), or 1(312) 455-8498 (outside USA)

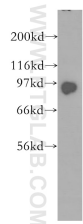
E: proteintech@ptglab.com
W: ptglab.com

This product is exclusively available under Proteintech Group brand and is not available to purchase from any other manufacturer.

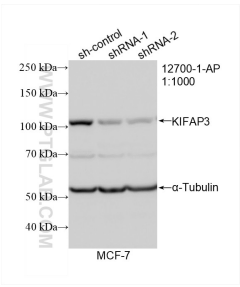
Selected Validation Data



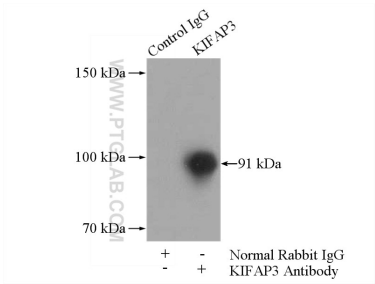
Immunofluorescent analysis of (-20°C Ethanol) fixed HepG2 cells using 12700-1-AP (KIFAP3 antibody) at dilution of 1:50 and Alexa Fluor 488-conjugated AffiniPure Goat Anti-Rabbit IgG(H+L).



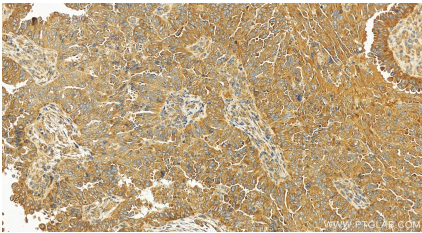
human brain tissue were subjected to SDS PAGE followed by western blot with 12700-1-AP (KIFAP3 antibody) at dilution of 1:600 incubated at room temperature for 1.5 hours.



WB result of KIFAP3 antibody (12700-1-AP; 1:1000; incubated at room temperature for 1.5 hours) with sh-Control and sh-KIFAP3 transfected MCF-7 cells.



IP result of anti-KIFAP3 (IP:12700-1-AP, 4ug; Detection:12700-1-AP 1:500) with mouse testis tissue lysate 4000ug.



Immunohistochemical analysis of paraffin-embedded human ovary cancer tissue slide using 12700-1-AP (KIFAP3 antibody) at dilution of 1:200 (under 20x lens). Heat mediated antigen retrieval with Tris-EDTA buffer (pH 9.0).