

For Research Use Only

# ELL2 Polyclonal antibody

Catalog Number: 12727-1-AP

Featured Product

7 Publications



## Basic Information

### Catalog Number:

12727-1-AP

### Size:

150ul, Concentration: 347 ug/ml by Bradford method using BSA as the standard;

### Source:

Rabbit

### Isotype:

IgG

### Immunogen Catalog Number:

AG3428

### GenBank Accession Number:

BC028412

### GeneID (NCBI):

22936

### UNIPROT ID:

O00472

### Full Name:

elongation factor, RNA polymerase II, 2

### Calculated MW:

640 aa, 72 kDa

### Observed MW:

72 kDa

### Purification Method:

Antigen affinity purification

### Recommended Dilutions:

WB 1:500-1:2000

IP 0.5-4.0 ug for 1.0-3.0 mg of total protein lysate

## Applications

### Tested Applications:

WB, IP, ELISA

### Cited Applications:

WB, IF, IP

### Species Specificity:

human, mouse, rat

### Cited Species:

human, mouse

### Positive Controls:

WB : HeLa cells, mouse stomach tissue, rat brain tissue, mouse brain tissue

IP : mouse brain tissue,

## Background Information

ELL2 (Elongation Factor for RNA Polymerase II 2) is a key transcriptional elongation factor that regulates RNA polymerase II (Pol II) during mRNA synthesis (PMID: 34265249). It belongs to the ELL gene family, which includes ELL1, ELL2, and ELL3, and plays a crucial role in controlling the elongation phase of transcription (PMID: 9108030). ELL2 is an androgen-responsive gene that is expressed by prostate epithelial cells and is frequently down-regulated in prostate cancer (PMID: 29179998).

## Notable Publications

Author	Pubmed ID	Journal	Application
Yuanzheng Peng	28611064	J Biol Chem	WB
Xiaorong Zhang	25083871	Cell	WB
Haoge Luo	35947121	FASEB J	WB

## Storage

### Storage:

Store at -20°C. Stable for one year after shipment.

### Storage Buffer:

PBS with 0.02% sodium azide and 50% glycerol, pH7.3

Aliquoting is unnecessary for -20°C storage

\*\*\* 20ul sizes contain 0.1% BSA

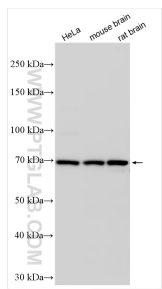
For technical support and original validation data for this product please contact:

T: 1 (888) 4PTGLAB (1-888-478-4522) (toll free in USA), or 1(312) 455-8498 (outside USA)

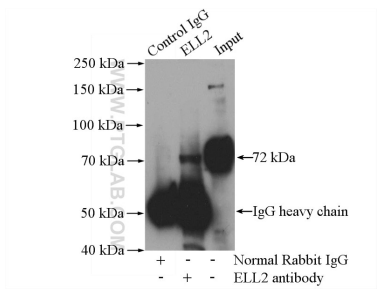
E: [proteintech@ptglab.com](mailto:proteintech@ptglab.com)  
W: [ptglab.com](http://ptglab.com)

This product is exclusively available under Proteintech Group brand and is not available to purchase from any other manufacturer.

## Selected Validation Data



Various lysates were subjected to SDS PAGE followed by western blot with 12727-1-AP (ELL2 antibody) at dilution of 1:1000 incubated at room temperature for 1.5 hours.



IP result of anti-ELL2 (IP:12727-1-AP, 4ug; Detection:12727-1-AP 1:300) with mouse brain tissue lysate 3440ug.