

For Research Use Only

# SERPIND1 Polyclonal antibody

Catalog Number: 12741-1-AP **2 Publications**



## Basic Information

|  |   |  |
|--|---|--|
| <b>Catalog Number:</b><br>12741-1-AP   | <b>GenBank Accession Number:</b><br>BC035028  | <b>Purification Method:</b><br>Antigen affinity purification |
| <b>Size:</b><br>150ul , Concentration: 450 ug/ml by Nanodrop and 313 ug/ml by Bradford method using BSA as the standard; | <b>GeneID (NCBI):</b><br>3053   | <b>Recommended Dilutions:</b><br>WB 1:500-1:2000             |
| <b>Source:</b><br>Rabbit   | <b>UNIPROT ID:</b><br>P05546  |  |
| <b>Isotype:</b><br>IgG   | <b>Full Name:</b><br>serpin peptidase inhibitor, clade D (heparin cofactor), member 1 |  |
| <b>Immunogen Catalog Number:</b><br>AG3637   | <b>Calculated MW:</b><br>499 aa, 57 kDa   |  |
|  | <b>Observed MW:</b><br>57-60 kDa  |  |

## Applications

|  |  |
|--|--|
| <b>Tested Applications:</b><br>WB, ELISA         | <b>Positive Controls:</b><br>WB : human plasma tissue, |
| <b>Cited Applications:</b><br>WB                 |  |
| <b>Species Specificity:</b><br>human, mouse, rat |  |
| <b>Cited Species:</b><br>human                   |  |

## Notable Publications

| Author        | Pubmed ID | Journal   | Application |
|---------------|-----------|-----------|-------------|
| Jo-Chuan Liu  | 33953300  | Sci Rep   | WB          |
| Liancheng Zhu | 27430660  | Oncol Rep |             |

## Storage

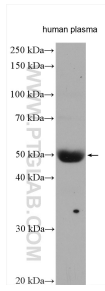
**Storage:**  
Store at -20°C. Stable for one year after shipment.  
**Storage Buffer:**  
PBS with 0.02% sodium azide and 50% glycerol pH 7.3.  
Aliquoting is unnecessary for -20°C storage

**\*\*\* 20ul sizes contain 0.1% BSA**

For technical support and original validation data for this product please contact:  
T: 1 (888) 4PTGLAB (1-888-478-4522) (toll free in USA), or 1(312) 455-8498 (outside USA)  
E: proteintech@ptglab.com  
W: ptglab.com

This product is exclusively available under Proteintech Group brand and is not available to purchase from any other manufacturer.

## Selected Validation Data



human plasma tissue were subjected to SDS PAGE followed by western blot with 12741-1-AP (SERPIND1 antibody) at dilution of 1:1000 incubated at room temperature for 1.5 hours.