

For Research Use Only

IMP3 Polyclonal antibody

Catalog Number: 12750-1-AP

Featured Product

1 Publications



Basic Information

Catalog Number:

12750-1-AP

Size:

150ul, Concentration: 170 ug/ml by Nanodrop and 160 ug/ml by Bradford method using BSA as the standard;

Source:

Rabbit

Isotype:

IgG

Immunogen Catalog Number:

AG3477

GenBank Accession Number:

BC020557

GeneID (NCBI):

55272

UNIPROT ID:

Q9NV31

Full Name:

IMP3, U3 small nucleolar ribonucleoprotein, homolog (yeast)

Calculated MW:

184 aa, 22 kDa

Observed MW:

22 kDa

Purification Method:

Antigen affinity purification

Recommended Dilutions:

WB 1:1000-1:4000

IP 0.5-4.0 ug for 1.0-3.0 mg of total protein lysate

IHC 1:50-1:500

IF/ICC 1:200-1:800

Applications

Tested Applications:

WB, IHC, IF/ICC, IP, ELISA

Cited Applications:

WB, IHC

Species Specificity:

human, mouse, rat

Cited Species:

human, mouse

Note-IHC: suggested antigen retrieval with TE buffer pH 9.0; (*) Alternatively, antigen retrieval may be performed with citrate buffer pH 6.0

Positive Controls:

WB : HeLa cells, MCF-7 cells

IP : HeLa cells,

IHC : human ovary cancer tissue,

IF/ICC : HepG2 cells,

Background Information

IMP U3 small nucleolar ribonucleoprotein 3 (IMP3, BRMS2), is a component of U3 small nucleolar ribonucleoprotein complex (U3 snoRNP), has been identified as a participant in pre-rRNA processing for nearly twenty years.

Notable Publications

Author	Pubmed ID	Journal	Application
Sonja M Kessler	29163784	Oncotarget	WB,IHC

Storage

Storage:

Store at -20°C. Stable for one year after shipment.

Storage Buffer:

PBS with 0.02% sodium azide and 50% glycerol pH 7.3.

Aliquoting is unnecessary for -20°C storage

*** 20ul sizes contain 0.1% BSA

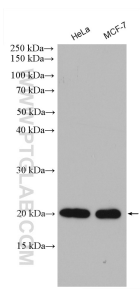
For technical support and original validation data for this product please contact:

T: 1 (888) 4PTGLAB (1-888-478-4522) (toll free in USA), or 1(312) 455-8498 (outside USA)

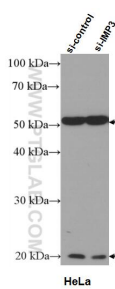
E: proteintech@ptglab.com
W: ptglab.com

This product is exclusively available under Proteintech Group brand and is not available to purchase from any other manufacturer.

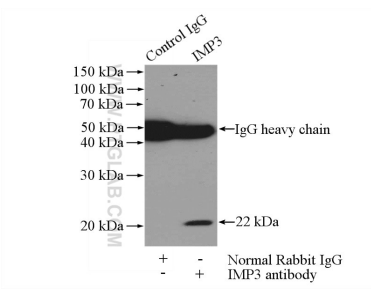
Selected Validation Data



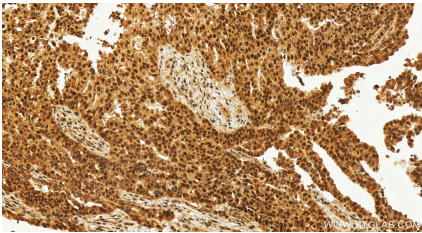
Various lysates were subjected to SDS PAGE followed by western blot with 12750-1-AP (IMP3 antibody) at dilution of 1:1000 incubated at room temperature for 1.5 hours.



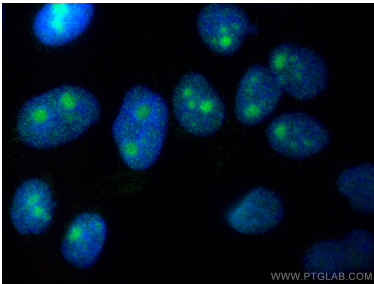
WB result of IMP3 antibody (12750-1-AP; 1:2000; incubated at room temperature for 1.5 hours) with sh-Control and sh-IMP3 transfected HeLa cells.



IP result of anti-IMP3 (IP:12750-1-AP, 3ug; Detection:12750-1-AP 1:500) with HeLa cells lysate 1200ug.



Immunohistochemical analysis of paraffin-embedded human ovary cancer tissue slide using 12750-1-AP (IMP3 antibody) at dilution of 1:200 (under 20x lens). Heat mediated antigen retrieval with Tris-EDTA buffer (pH 9.0).



Immunofluorescent analysis of (4% PFA) fixed HepG2 cells using IMP3 antibody (12750-1-AP) at dilution of 1:400 and CoraLite®488-Conjugated AffiniPure Goat Anti-Rabbit IgG(H+L) (SA00013-2).