

CP110

Polyclonal ANTIBODY

Catalog Number: 12780-1-AP

Featured Product

50 Publications

Basic Information

Catalog Number:
12780-1-AP

Size:
40 µg/150 µl

Source:
Rabbit

Isotype:
IgG

Purification Method:
Antigen affinity purification

Immunogen Catalog Number:
AG3489

GenBank Accession Number:
BC036654

GeneID (NCBI):
9738

Full Name:
CP110 protein

Calculated MW:
991aa, 111 kDa

Observed MW:
113 kDa

Recommended Dilutions:

WB 1:500-1:3000

IP 0.5-4.0 µg for IP and 1:500-1:2000 for WB

IHC 1:50-1:500

IF 1:20-1:200

Applications

Tested Applications:

FC, IF, IHC, IP, WB, ELISA

Cited Applications:

IF, IHC, IP, WB

Species Specificity:

human, mouse, rat, dog

Cited Species:

human, mouse, rat, Xenopus

Positive Controls:

WB : HeLa cells; K-562 cells

IP : HeLa cells; multi-cells

IHC : human testis tissue; human prostate cancer tissue

IF : MEF/HeLa cells;

Background Information

CP110, also named as CCP110 and KIAA0419, is an 110kDa protein. This gene is different to the gene CEP110 (geneID:11064; CNTRL). CP110 is a centriolar protein that positively regulates centriole duplication while restricting centriole elongation and ciliogenesis. And it acts as a key negative regulator of ciliogenesis in collaboration with CEP97 by capping the mother centriole thereby preventing cilia formation.

Notable Publications

Author	Pubmed ID	Journal	Application
Maria P Cavilan	30224411	EMBO Rep	IF
Jennifer T Wang	28906251	Elife	IF
Peter Walentek	27623009	Elife	IF

Storage

Storage:

Store at -20°C. Stable for one year after shipment.

Storage Buffer:

PBS with 0.02% sodium azide and 50% glycerol pH 7.3.

Aliquoting is unnecessary for -20°C storage

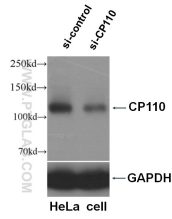
For technical support and original validation data for this product please contact:

T: 1 (888) 4PTGLAB (1-888-478-4522) (toll free in USA), or 1(312) 455-8498 (outside USA)

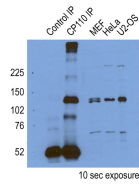
E: proteintech@ptglab.com
W: ptglab.com

This product is exclusively available under Proteintech Group brand and is not available to purchase from any other manufacturer.

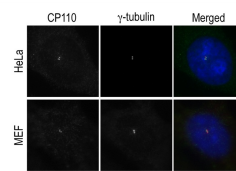
Selected Validation Data



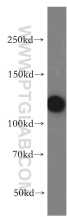
WB result of CP110 antibody (12780-1-AP, 1:500) with si-control and si-CP110 transfected HeLa cells.



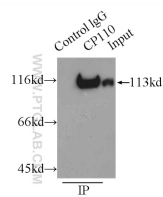
IP result of CP110(12780-1-AP) by Dr. Corbit, Kevin.



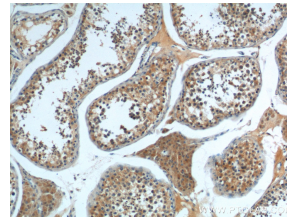
IF result(Centrioles) of anti-CP110(12780-1-AP) by Dr. Corbit Kevin.



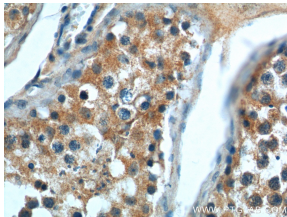
HeLa cells were subjected to SDS PAGE followed by western blot with 12780-1-AP(CP110 antibody) at dilution of 1:400 incubated at room temperature for 1.5 hours



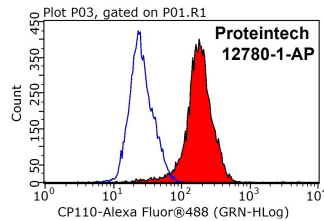
IP Result of anti-CP110 (IP:12780-1-AP 3ug; Detection:12780-1-AP 1:1000) with HeLa cells lysate 3000ug.



Immunohistochemistry of paraffin-embedded human testis tissue slide using 12780-1-AP(CP110 Antibody) at dilution of 1:200 (under 10x lens)



Immunohistochemistry of paraffin-embedded human testis tissue slide using 12780-1-AP(CP110 Antibody) at dilution of 1:200 (under 40x lens)



1X10⁶ HeLa cells were stained with .2ug CP110 antibody (12780-1-AP, red) and control antibody (blue). Fixed with 4% PFA blocked with 3% BSA (30 min). Alexa Fluor 488-conjugated AffiniPure Goat Anti-Rabbit IgG(H+L) with dilution 1:1000.