

For Research Use Only

# SMAP1 Polyclonal antibody

Catalog Number: 12799-1-AP



## Basic Information

<b>Catalog Number:</b> 12799-1-AP	<b>GenBank Accession Number:</b> BC036123	<b>Purification Method:</b> Antigen affinity purification
<b>Size:</b> 150ul , Concentration: 900 µg/ml by Nanodrop and 480 µg/ml by Bradford method using BSA as the standard;	<b>GeneID (NCBI):</b> 60682	<b>Recommended Dilutions:</b> WB 1:500-1:2000 IHC 1:20-1:200
<b>Source:</b> Rabbit	<b>Full Name:</b> small ArfGAP 1	
<b>Isotype:</b> IgG	<b>Calculated MW:</b> 467 aa, 50 kDa	
<b>Immunogen Catalog Number:</b> AG3544	<b>Observed MW:</b> 50-55 kDa	

## Applications

<b>Tested Applications:</b> IHC, WB, ELISA	<b>Positive Controls:</b>
<b>Species Specificity:</b> human, mouse, rat	<b>WB :</b> NIH/3T3 cells, human adrenal gland tissue, human plasma tissue, mouse brain tissue, rat lymph tissue
<b>Note-IHC: suggested antigen retrieval with TE buffer pH 9.0; (*) Alternatively, antigen retrieval may be performed with citrate buffer pH 6.0</b>	<b>IHC :</b> human stomach tissue,

## Background Information

SMAP1, also named as FLJ13159 and SMAP 1, contains a Arf-GAP domain. SMAP1 is a GTPase activating protein for ARF6 that binds clathrin and regulates clathrin-dependent endocytosis. SMAP1 may play a role in erythropoiesis. This antibody is a rabbit polyclonal antibody raised against residues near the N terminus of human SMAP1.

## Storage

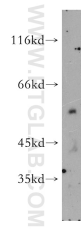
**Storage:**  
Store at -20°C. Stable for one year after shipment.  
**Storage Buffer:**  
PBS with 0.02% sodium azide and 50% glycerol pH 7.3.  
Aliquoting is unnecessary for -20°C storage

\*\*\* 20ul sizes contain 0.1% BSA

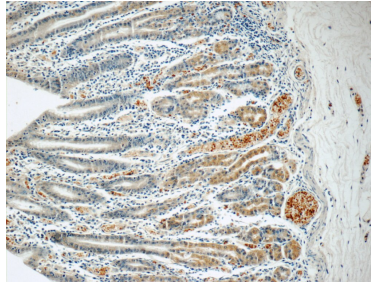
For technical support and original validation data for this product please contact:  
T: 1 (888) 4PTGLAB (1-888-478-4522) (toll free in USA), or 1(312) 455-8498 (outside USA) E: proteintech@ptglab.com W: ptglab.com

This product is exclusively available under Proteintech Group brand and is not available to purchase from any other manufacturer.

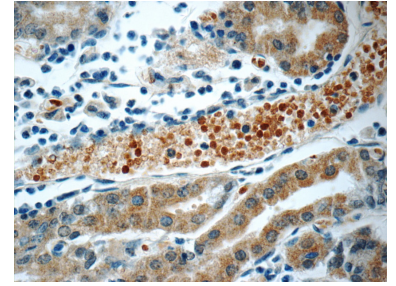
## Selected Validation Data



NIH/3T3 cells were subjected to SDS PAGE followed by western blot with 12799-1-AP (SMAP1 antibody) at dilution of 1:1000 incubated at room temperature for 1.5 hours.



Immunohistochemical analysis of paraffin-embedded human stomach tissue slide using 12799-1-AP (SMAP1 Antibody) at dilution of 1:50 (under 10x lens).



Immunohistochemical analysis of paraffin-embedded human stomach tissue slide using 12799-1-AP (SMAP1 Antibody) at dilution of 1:50 (under 40x lens).