

For Research Use Only

# ITPKB Polyclonal antibody

Catalog Number: 12816-1-AP

Featured Product

8 Publications



## Basic Information

### Catalog Number:

12816-1-AP

### Size:

150ul, Concentration: 700 ug/ml by Nanodrop;

### Source:

Rabbit

### Isotype:

IgG

### Immunogen Catalog Number:

AG3456

### GenBank Accession Number:

BC015009

### GeneID (NCBI):

3707

### UNIPROT ID:

P27987

### Full Name:

inositol 1,4,5-trisphosphate 3-kinase B

### Calculated MW:

946 aa, 102 kDa

### Observed MW:

102-110 kDa

### Purification Method:

Antigen affinity purification

### Recommended Dilutions:

WB 1:500-1:1000

IHC 1:20-1:200

## Applications

### Tested Applications:

WB, IHC, ELISA

### Cited Applications:

WB, IHC, IF

### Species Specificity:

human, mouse, rat

### Cited Species:

human, mouse

### Positive Controls:

**WB**: mouse brain tissue, K-562 cells, mouse lung tissue, mouse thymus tissue, rat brain tissue

**IHC**: human cervical cancer tissue, human lung tissue, mouse brain tissue

**Note-IHC: suggested antigen retrieval with TE buffer pH 9.0; (\*) Alternatively, antigen retrieval may be performed with citrate buffer pH 6.0**

## Background Information

Inositol 1,4,5-trisphosphate 3-kinase isoform B (ITPKB) is also named as IP3KB and possesses important roles in the development of immune cells. IP3KB can be targeted to multiple cellular compartments, among them nuclear localization and binding in close proximity to the plasma membrane. The B isoform is the only IP3K that is almost ubiquitously expressed in mammalian cells (PMID:21148483). Three isoforms of IP3KB occur in mammals, which are distinguished by different molecular masses, sensitivity to  $Ca^{2+}$ /CaM (calmodulin), intracellular distribution and tissue expression (PMID:16173920). ITPKB can be cleaved into many fragments, this antibody can recognize the N-terminal peptide fragment (PMID:15130091)

## Notable Publications

Author	Pubmed ID	Journal	Application
Xiulei Mo	35512704	Cell	WB
Laura Marongiu	33785611	Sci Signal	IHC, WB
Abduarahman Almutairi	31987846	J Allergy Clin Immunol	WB

## Storage

### Storage:

Store at -20°C. Stable for one year after shipment.

### Storage Buffer:

PBS with 0.02% sodium azide and 50% glycerol pH 7.3.

Aliquoting is unnecessary for -20°C storage

\*\*\* 20ul sizes contain 0.1% BSA

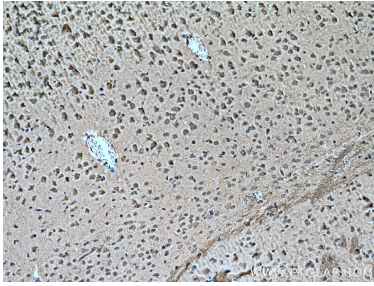
For technical support and original validation data for this product please contact:

T: 1 (888) 4PTGLAB (1-888-478-4522) (toll free in USA), or 1(312) 455-8498 (outside USA)

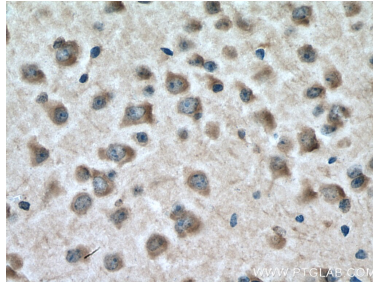
E: proteintech@ptglab.com  
W: ptglab.com

This product is exclusively available under Proteintech Group brand and is not available to purchase from any other manufacturer.

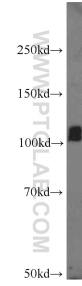
## Selected Validation Data



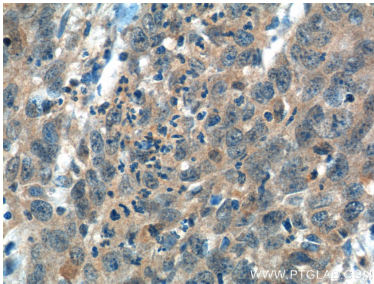
Immunohistochemical analysis of paraffin-embedded mouse brain tissue slide using 12816-1-AP (ITPKB antibody) at dilution of 1:200 (under 10x lens). Heat mediated antigen retrieval with Tris-EDTA buffer (pH 9.0).



Immunohistochemical analysis of paraffin-embedded mouse brain tissue slide using 12816-1-AP (ITPKB antibody) at dilution of 1:200 (under 40x lens). Heat mediated antigen retrieval with Tris-EDTA buffer (pH 9.0).



mouse brain tissue were subjected to SDS PAGE followed by western blot with 12816-1-AP (ITPKB antibody) at dilution of 1:500 incubated at room temperature for 1.5 hours.



Immunohistochemical analysis of paraffin-embedded human cervical cancer tissue slide using 12816-1-AP (ITPKB Antibody) at dilution of 1:50 (under 40x lens).