

For Research Use Only

SLC20A2 Polyclonal antibody

Catalog Number: 12820-1-AP

Featured Product

11 Publications



Basic Information

Catalog Number:

12820-1-AP

Size:

150ul, Concentration: 600 ug/ml by Nanodrop and 200 ug/ml by Bradford method using BSA as the standard;

Source:

Rabbit

Isotype:

IgG

Immunogen Catalog Number:

AG3469

GenBank Accession Number:

BC028600

GeneID (NCBI):

6575

UNIPROT ID:

Q08357

Full Name:

solute carrier family 20 (phosphate transporter), member 2

Calculated MW:

652 aa, 70 kDa

Observed MW:

68-70 kDa

Purification Method:

Antigen affinity purification

Recommended Dilutions:

WB 1:500-1:1000

IP 0.5-4.0 ug for 1.0-3.0 mg of total protein lysate

IHC 1:50-1:500

IF-P 1:50-1:500

Applications

Tested Applications:

WB, IHC, IF-P, IP, ELISA

Cited Applications:

WB, IF

Species Specificity:

human, mouse

Cited Species:

human, mouse

Positive Controls:

WB: mouse brain tissue, COLO 320 cells, mouse kidney tissue

IP: COLO 320 cells,

IHC: human bowen disease, mouse testis tissue

IF-P: mouse brain tissue,

Note-IHC: suggested antigen retrieval with TE buffer pH 9.0; (*) Alternatively, antigen retrieval may be performed with citrate buffer pH 6.0

Background Information

SLC20A2 (also known as PiT2) is a sodium (Na)-phosphate (Pi) co-transporter that belongs to the SLC20 family. SLC20A2 is highly expressed in the central nervous system and controls hippocampal-dependent learning and memory (PMID: 38195526). SLC20A2 is the major causative gene for primary familial brain calcification (PFBC), a rare neurological disease characterized by widespread cognitive impairment.

Notable Publications

Author	Pubmed ID	Journal	Application
Toshimi Michigami	35577326	Bone	WB
Nina Bon	29233890	J Biol Chem	WB
Katalin Éva Sikura	31017307	Br J Pharmacol	WB

Storage

Storage:

Store at -20°C. Stable for one year after shipment.

Storage Buffer:

PBS with 0.02% sodium azide and 50% glycerol pH 7.3.

Aliquoting is unnecessary for -20°C storage

*** 20ul sizes contain 0.1% BSA

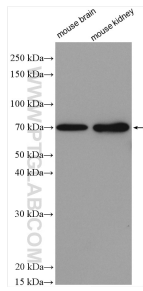
For technical support and original validation data for this product please contact:

T: 1 (888) 4PTGLAB (1-888-478-4522) (toll free in USA), or 1(312) 455-8498 (outside USA)

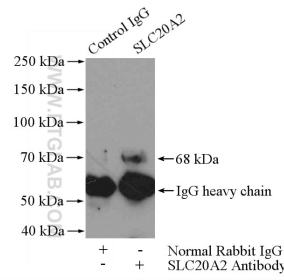
E: proteintech@ptglab.com
W: ptglab.com

This product is exclusively available under Proteintech Group brand and is not available to purchase from any other manufacturer.

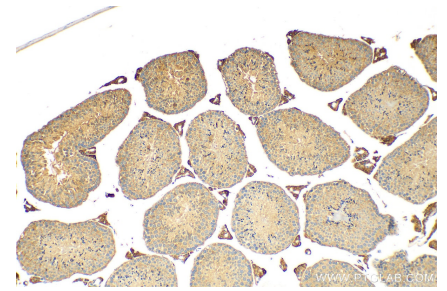
Selected Validation Data



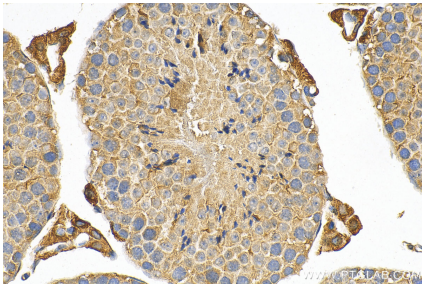
Various lysates were subjected to SDS PAGE followed by western blot with 12820-1-AP (SLC20A2 antibody) at dilution of 1:600 incubated at room temperature for 1.5 hours.



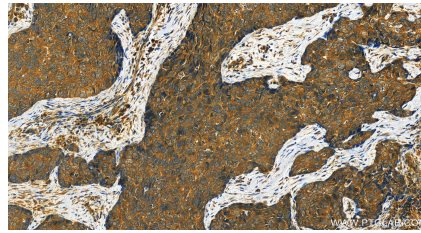
IP result of anti-SLC20A2 (IP:12820-1-AP, 4ug; Detection:12820-1-AP 1:400) with COLO 320 cells lysate 2400ug.



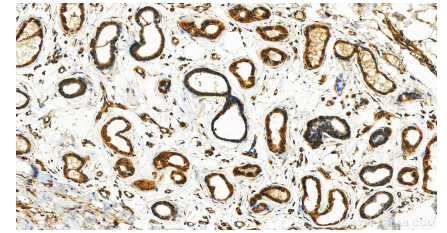
Immunohistochemical analysis of paraffin-embedded mouse testis tissue slide using 12820-1-AP (SLC20A2 antibody) at dilution of 1:400 (under 10x lens). Heat mediated antigen retrieval with Tris-EDTA buffer (pH 9.0).



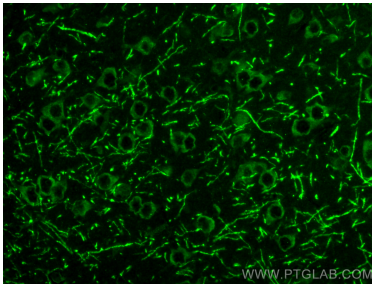
Immunohistochemical analysis of paraffin-embedded mouse testis tissue slide using 12820-1-AP (SLC20A2 antibody) at dilution of 1:400 (under 40x lens). Heat mediated antigen retrieval with Tris-EDTA buffer (pH 9.0).



Immunohistochemical analysis of paraffin-embedded human Bowen disease slide using 12820-1-AP (SLC20A2 antibody) at dilution of 1:200 (under 20x lens). Heat mediated antigen retrieval with Tris-EDTA buffer (pH 9.0).



Immunohistochemical analysis of paraffin-embedded human Bowen disease slide using 12820-1-AP (SLC20A2 antibody) at dilution of 1:200 (under 20x lens). Heat mediated antigen retrieval with Tris-EDTA buffer (pH 9.0).



Immunofluorescent analysis of (4% PFA) fixed paraffin-embedded mouse brain tissue using SLC20A2 antibody (12820-1-AP) at dilution of 1:200 and Multi-rAb CoraLite® Plus 488-Goat Anti-Rabbit Recombinant Secondary Antibody (H+L) (RGAR002). Heat mediated antigen retrieval with Tris-EDTA buffer (pH 9.0).