

For Research Use Only

# MAP4K5 Polyclonal antibody

Catalog Number: 12827-1-AP



## Basic Information

**Catalog Number:**

12827-1-AP

**Size:**

150ul , Concentration: 400 ug/ml by Nanodrop and 260 ug/ml by Bradford method using BSA as the standard;

**Source:**

Rabbit

**Isotype:**

IgG

**Immunogen Catalog Number:**

AG3547

**GenBank Accession Number:**

BC036013

**GeneID (NCBI):**

11183

**UNIPROT ID:**

Q9Y4K4

**Full Name:**

mitogen-activated protein kinase kinase kinase 5

**Calculated MW:**

846 aa, 95 kDa

**Observed MW:**

58 kDa, 95 kDa, 120 kDa

**Purification Method:**

Antigen affinity purification

**Recommended Dilutions:**

WB 1:500-1:2000

IHC 1:20-1:200

## Applications

**Tested Applications:**

WB, IHC, ELISA

**Species Specificity:**

human, mouse, rat

**Note-IHC: suggested antigen retrieval with TE buffer pH 9.0; (\*) Alternatively, antigen retrieval may be performed with citrate buffer pH 6.0**

**Positive Controls:**

WB : mouse ovary tissue, HeLa cells, K-562 cells

IHC : human ovary tumor tissue,

## Storage

**Storage:**

Store at -20°C. Stable for one year after shipment.

**Storage Buffer:**

PBS with 0.02% sodium azide and 50% glycerol pH 7.3.

Aliquoting is unnecessary for -20°C storage

\*\*\* 20ul sizes contain 0.1% BSA

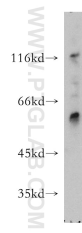
For technical support and original validation data for this product please contact:

T: 1 (888) 4PTGLAB (1-888-478-4522) (toll free in USA), or 1(312) 455-8498 (outside USA)

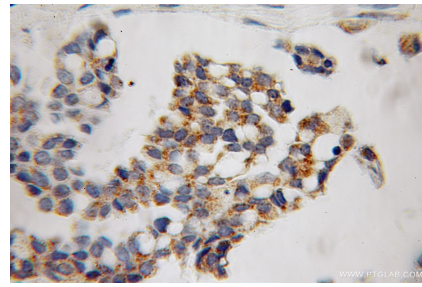
E: [proteintech@ptglab.com](mailto:proteintech@ptglab.com)  
W: [ptglab.com](http://ptglab.com)

This product is exclusively available under Proteintech Group brand and is not available to purchase from any other manufacturer.

## Selected Validation Data



mouse ovary tissue were subjected to SDS PAGE followed by western blot with 12827-1-AP (MAP4K5 antibody) at dilution of 1:1000 incubated at room temperature for 1.5 hours.



Immunohistochemical analysis of paraffin-embedded human ovary tumor using 12827-1-AP (MAP4K5 antibody) at dilution of 1:100 (under 10x lens).