

For Research Use Only

GIPC2 Polyclonal antibody

Catalog Number: 12832-1-AP

1 Publications



Basic Information

Catalog Number:

12832-1-AP

Size:

150ul, Concentration: 750 ug/ml by Nanodrop and 613 ug/ml by Bradford method using BSA as the standard;

Source:

Rabbit

Isotype:

IgG

Immunogen Catalog Number:

AG3566

GenBank Accession Number:

BC036075

GeneID (NCBI):

54810

UNIPROT ID:

Q8TF65

Full Name:

GIPC PDZ domain containing family, member 2

Calculated MW:

315 aa, 34 kDa

Observed MW:

34 kDa

Purification Method:

Antigen affinity purification

Recommended Dilutions:

WB 1:1000-1:5000

Applications

Tested Applications:

WB, ELISA

Cited Applications:

WB

Species Specificity:

human, mouse, rat

Cited Species:

human

Positive Controls:

WB : HEK-293 cells, MKN-45 cells, T-47D cells, mouse colon tissue

Notable Publications

Author	Pubmed ID	Journal	Application
Jingyuan Zhao	37212125	Epigenomics	WB

Storage

Storage:

Store at -20°C. Stable for one year after shipment.

Storage Buffer:

PBS with 0.02% sodium azide and 50% glycerol pH 7.3.

Aliquoting is unnecessary for -20°C storage

*** 20ul sizes contain 0.1% BSA

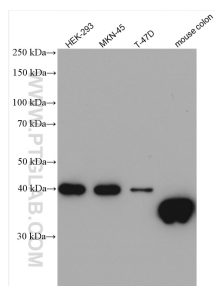
For technical support and original validation data for this product please contact:

T: 1 (888) 4PTGLAB (1-888-478-4522) (toll free in USA), or 1(312) 455-8498 (outside USA)

E: proteintech@ptglab.com
W: ptglab.com

This product is exclusively available under Proteintech Group brand and is not available to purchase from any other manufacturer.

Selected Validation Data



Various lysates were subjected to SDS PAGE followed by western blot with 12832-1-AP (GIPC2 antibody) at dilution of 1:2500 incubated at room temperature for 1.5 hours.