

For Research Use Only

BCL2L14 Polyclonal antibody

Catalog Number: 12846-1-AP



Basic Information

Catalog Number:

12846-1-AP

Size:

150ul, Concentration: 1000 ug/ml by Nanodrop and 467 ug/ml by Bradford method using BSA as the standard;

Source:

Rabbit

Isotype:

IgG

Immunogen Catalog Number:

AG3926

GenBank Accession Number:

BC025778

GeneID (NCBI):

79370

UNIPROT ID:

Q9BZR8

Full Name:

BCL2-like 14 (apoptosis facilitator)

Calculated MW:

327 aa, 37 kDa

Observed MW:

37 kDa

Purification Method:

Antigen affinity purification

Recommended Dilutions:

WB 1:1000-1:2000

IHC 1:20-1:200

IF/ICC 1:50-1:500

Applications

Tested Applications:

WB, IHC, IF/ICC, FC (Intra), ELISA

Species Specificity:

human

Note-IHC: suggested antigen retrieval with TE buffer pH 9.0; (*) Alternatively, antigen retrieval may be performed with citrate buffer pH 6.0

Positive Controls:

WB : A549 cells, human lung tissue

IHC : human prostate cancer tissue,

IF/ICC : MCF-7 cells,

Storage

Storage:

Store at -20°C. Stable for one year after shipment.

Storage Buffer:

PBS with 0.02% sodium azide and 50% glycerol pH 7.3.

Aliquoting is unnecessary for -20°C storage

*** 20ul sizes contain 0.1% BSA

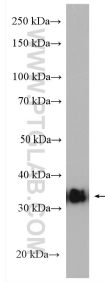
For technical support and original validation data for this product please contact:

T: 1 (888) 4PTGLAB (1-888-478-4522) (toll free in USA), or 1(312) 455-8498 (outside USA)

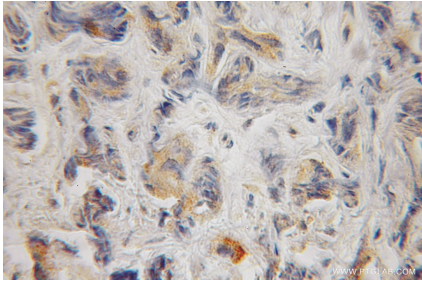
E: proteintech@ptglab.com
W: ptglab.com

This product is exclusively available under Proteintech Group brand and is not available to purchase from any other manufacturer.

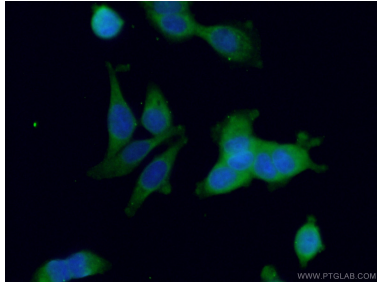
Selected Validation Data



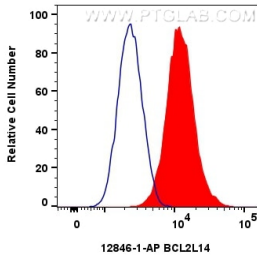
A549 cells were subjected to SDS PAGE followed by western blot with 12846-1-AP (BCL2L14 antibody) at dilution of 1:2000 incubated at room temperature for 1.5 hours.



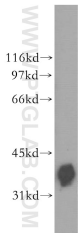
Immunohistochemical analysis of paraffin-embedded human prostate cancer using 12846-1-AP (BCL2L14 antibody) at dilution of 1:100 (under 10x lens).



Immunofluorescent analysis of (-20°C Ethanol) fixed MCF-7 cells using 12846-1-AP (BCL2L14 antibody) at dilution of 1:50 and Alexa Fluor 488-Conjugated AffiniPure Goat Anti-Rabbit IgG(H+L).



1x10⁶ Jurkat cells were intracellularly stained with 0.4 ug BCL2L14 Polyclonal antibody (12846-1-AP) and CoraLite®488-Conjugated AffiniPure Goat Anti-Rabbit IgG(H+L) (SA00013-2)(red), or 0.4 ug Rabbit IgG control Rabbit PolyAb (30000-0-AP) (blue). Cells were fixed with 4% PFA and permeabilized with Flow Cytometry Perm Buffer (PF00011-C).



human lung tissue were subjected to SDS PAGE followed by western blot with 12846-1-AP (BCL2L14 antibody) at dilution of 1:500 incubated at room temperature for 1.5 hours.