

For Research Use Only

HLF Polyclonal antibody

Catalog Number: 12870-1-AP



Basic Information

Catalog Number: 12870-1-AP	GenBank Accession Number: BC036093	Purification Method: Antigen affinity purification
Size: 150ul , Concentration: 850 ug/ml by Nanodrop and 433 ug/ml by Bradford method using BSA as the standard;	GeneID (NCBI): 3131	Recommended Dilutions: WB 1:500-1:2000 IHC 1:250-1:1000
Source: Rabbit	UNIPROT ID: Q16534	
Isotype: IgG	Full Name: hepatic leukemia factor	
Immunogen Catalog Number: AG3533	Calculated MW: 295 aa, 33 kDa	
	Observed MW: 33kDa, 66 kDa	

Applications

Tested Applications: WB, IHC, ELISA	Positive Controls:
Species Specificity: human, mouse, rat	WB : SH-SY5Y cells, HEK-293 cells, K-562 cells, HepG2 cells, mouse liver tissue, mouse brain tissue
Note-IHC: suggested antigen retrieval with TE buffer pH 9.0; (*) Alternatively, antigen retrieval may be performed with citrate buffer pH 6.0	IHC : rat liver tissue, mouse liver tissue

Background Information

Hepatic leukemia factor (Hlf), is a novel hepatic protein of the proline and acidic amino acid-rich basic leucine zipper (bZip) family, previously studied for its role in circadian rhythm regulated neurotransmitter metabolism in the brain (PMID: 29166614). HLF is an essential regulator of HSC quiescence and that HLF deficiency leads to an exhaustion of HSCs in adult mouse BM during regeneration or following cytotoxic stress (PMID: 29262330). Hlf is able to bind DNA specifically as a homodimer or as a heterodimer with other PAR factors (PMID: 1516826). Western blot analysis detected bands 33 kDa whereas the 66 kDa could be the dimer form of Hlf.

Storage

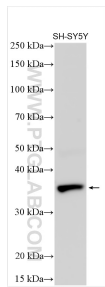
Storage:
Store at -20°C. Stable for one year after shipment.
Storage Buffer:
PBS with 0.02% sodium azide and 50% glycerol pH 7.3.
Aliquoting is unnecessary for -20°C storage

*** 20ul sizes contain 0.1% BSA

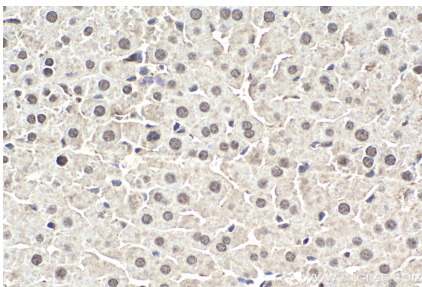
For technical support and original validation data for this product please contact:
T: 1 (888) 4PTGLAB (1-888-478-4522) (toll free in USA), or 1(312) 455-8498 (outside USA)
E: proteintech@ptglab.com
W: ptglab.com

This product is exclusively available under Proteintech Group brand and is not available to purchase from any other manufacturer.

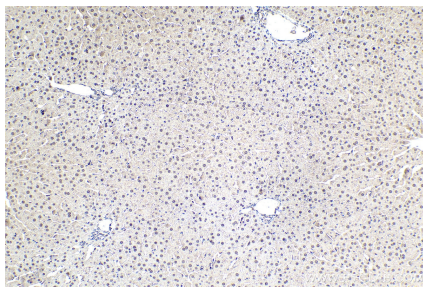
Selected Validation Data



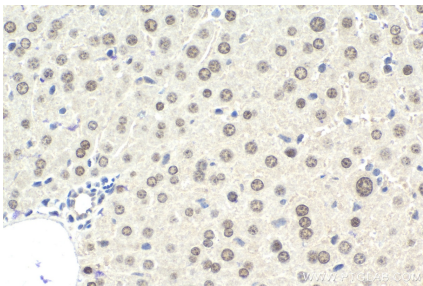
Various lysates were subjected to SDS PAGE followed by western blot with 12870-1-AP (HLF antibody) at dilution of 1:1000 incubated at room temperature for 1.5 hours.



Immunohistochemical analysis of paraffin-embedded rat liver tissue slide using 12870-1-AP (HLF antibody) at dilution of 1:500 (under 40x lens). Heat mediated antigen retrieval with Tris-EDTA buffer (pH 9.0).



Immunohistochemical analysis of paraffin-embedded rat liver tissue slide using 12870-1-AP (HLF antibody) at dilution of 1:500 (under 10x lens). Heat mediated antigen retrieval with Tris-EDTA buffer (pH 9.0).



Immunohistochemical analysis of paraffin-embedded mouse liver tissue slide using 12870-1-AP (HLF antibody) at dilution of 1:1000 (under 40x lens). Heat mediated antigen retrieval with Tris-EDTA buffer (pH 9.0).