

For Research Use Only

GJB3 Polyclonal antibody

Catalog Number: 12880-1-AP

Featured Product

11 Publications



Basic Information

Catalog Number:

12880-1-AP

Size:

150ul, Concentration: 750 ug/ml by Nanodrop;

Source:

Rabbit

Isotype:

IgG

Immunogen Catalog Number:

AG3839

GenBank Accession Number:

BC012918

GeneID (NCBI):

2707

UNIPROT ID:

O75712

Full Name:

gap junction protein, beta 3, 31kDa

Calculated MW:

270 aa, 31 kDa

Observed MW:

31 kDa

Purification Method:

Antigen affinity purification

Recommended Dilutions:

WB: 1:1000-1:4000

IP: 0.5-4.0 ug for 1.0-3.0 mg of total protein lysate

IHC: 1:50-1:500

IF-P: 1:50-1:500

Applications

Tested Applications:

WB, IHC, IF-P, IP, ELISA

Cited Applications:

WB, IHC, IF

Species Specificity:

human, mouse, rat

Cited Species:

human, mouse, rat, marmoset

Positive Controls:

WB: mouse stomach tissue, mouse ovary tissue, HeLa cells

IP: HeLa cells,

IHC: mouse placenta tissue, human ovary tumor tissue, human cervix tissue, human skin cancer tissue

IF-P: human placenta tissue,

Note-IHC: suggested antigen retrieval with TE buffer pH 9.0; (*) Alternatively, antigen retrieval may be performed with citrate buffer pH 6.0

Background Information

GJB3, also known as Connexin-31 (Cx31), belongs to the connexin family. Connexins are membrane-spanning proteins that assemble to form gap junction channels that facilitate the transfer of ions and small molecules between cells. Mutations in the gene of GJB3 have been described in patients with dominant and recessive hearing impairment and in patients with erythrokeratoderma variabilis (EKV).

Notable Publications

Author	Pubmed ID	Journal	Application
Stefania Monterisi	36107487	Elife	WB
Girioca Lorusso	36070364	Sci Transl Med	WB,IHC
Yanmiao Huo	36341459	Front Immunol	WB,IHC

Storage

Storage:

Store at -20°C. Stable for one year after shipment.

Storage Buffer:

PBS with 0.02% sodium azide and 50% glycerol, pH7.3

Aliquoting is unnecessary for -20°C storage

*** 20ul sizes contain 0.1% BSA

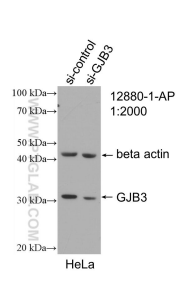
For technical support and original validation data for this product please contact:

T: 1 (888) 4PTGLAB (1-888-478-4522) (toll free in USA), or 1(312) 455-8498 (outside USA)

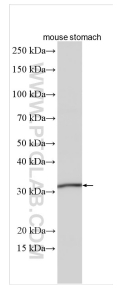
E: proteintech@ptglab.com
W: ptglab.com

This product is exclusively available under Proteintech Group brand and is not available to purchase from any other manufacturer.

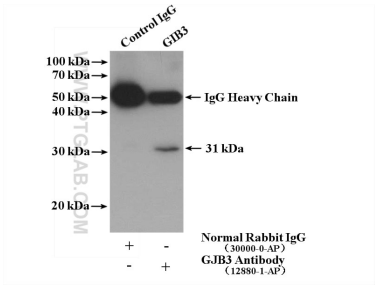
Selected Validation Data



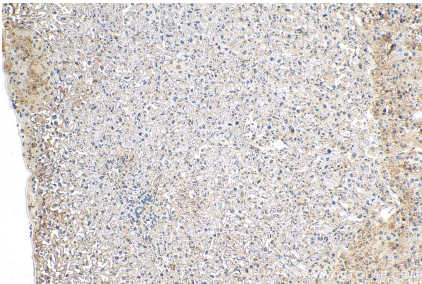
WB result of GJB3 antibody (12880-1-AP; 1:2000; incubated at room temperature for 1.5 hours) with sh-Control and sh-GJB3 transfected HeLa cells.



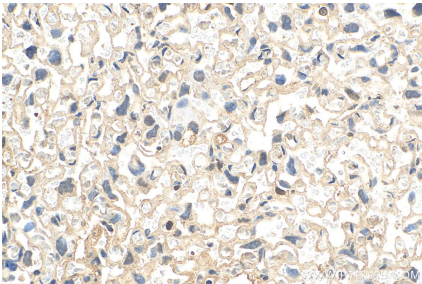
mouse stomach tissue was subjected to SDS PAGE followed by western blot with 12880-1-AP (GJB3 antibody) at dilution of 1:2000 incubated at room temperature for 1.5 hours.



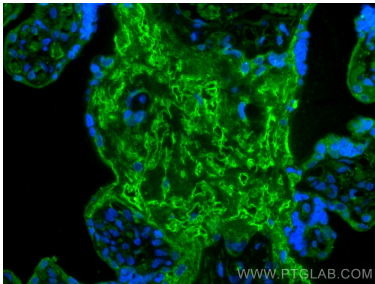
IP result of anti-GJB3 (IP:12880-1-AP, 4ug; Detection:12880-1-AP 1:500) with HeLa cells lysate 2600 ug.



Immunohistochemical analysis of paraffin-embedded mouse placenta tissue slide using 12880-1-AP (GJB3 antibody) at dilution of 1:200 (under 10x lens). Heat mediated antigen retrieval with Tris-EDTA buffer (pH 9.0).



Immunohistochemical analysis of paraffin-embedded mouse placenta tissue slide using 12880-1-AP (GJB3 antibody) at dilution of 1:200 (under 40x lens). Heat mediated antigen retrieval with Tris-EDTA buffer (pH 9.0).



Immunofluorescent analysis of (4% PFA) fixed paraffin-embedded human placenta tissue using GJB3 antibody (12880-1-AP) at dilution of 1:200 and CoraLite®488-Conjugated AffiniPure Goat Anti-Rabbit IgG(H+L) (SA00013-2). Heat mediated antigen retrieval with Tris-EDTA buffer (pH 9.0).