

For Research Use Only

PLS3 Polyclonal antibody

Catalog Number: 12917-1-AP **1 Publications**



Basic Information

Catalog Number: 12917-1-AP	GenBank Accession Number: BC039049	Purification Method: Antigen affinity purification
Size: 150ul , Concentration: 500 µg/ml by Nanodrop and 340 µg/ml by Bradford method using BSA as the standard;	GeneID (NCBI): 5358	Recommended Dilutions: WB 1:1000-1:8000 IP 0.5-4.0 ug for IP and 1:500-1:1000 for WB
Source: Rabbit	Full Name: plastin 3 (T isoform)	IF 1:50-1:500
Isotype: IgG	Calculated MW: 630 aa, 71 kDa	
Immunogen Catalog Number: AG3574	Observed MW: 68 kDa	

Applications

Tested Applications: IF, IP, WB, ELISA	Positive Controls:
Cited Applications: WB	WB : A431 cells, HEK-293 cells, HeLa cells, HepG2 cells, NIH/3T3 cells
Species Specificity: human, mouse, rat	IP : A431 cells,
Cited Species: mouse	IF : A431 cells,

Background Information

PLS3, also named T-plastin and Plastin-3, is an actin-bundling protein found in intestinal microvilli, hair cell stereocilia, and fibroblast filopodia. It plays an important role in leukocyte function. L-plastin plays an important role in leukocyte function, and T-plastin is possibly involved in DNA repair. Both T- and L-plastin are implicated in several diseases, and L-plastin is considered to be a valuable marker for cancer (PMID: 15960882).

Notable Publications

Author	Pubmed ID	Journal	Application
Jasmin Morandell	34031387	Nat Commun	WB

Storage

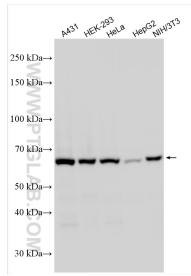
Storage:
Store at -20°C. Stable for one year after shipment.
Storage Buffer:
PBS with 0.02% sodium azide and 50% glycerol pH 7.3.
Aliquoting is unnecessary for -20°C storage

*** 20ul sizes contain 0.1% BSA

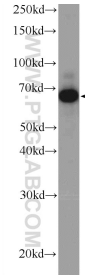
For technical support and original validation data for this product please contact:
T: 1 (888) 4PTGLAB (1-888-478-4522) (toll free in USA), or 1(312) 455-8498 (outside USA)
E: proteintech@ptglab.com
W: ptglab.com

This product is exclusively available under Proteintech Group brand and is not available to purchase from any other manufacturer.

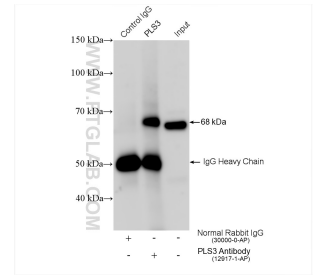
Selected Validation Data



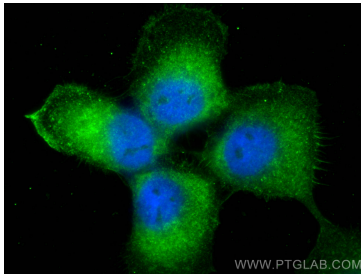
Various lysates were subjected to SDS PAGE followed by western blot with 12917-1-AP (PLS3 antibody) at dilution of 1:4000 incubated at room temperature for 1.5 hours.



A431 cells were subjected to SDS PAGE followed by western blot with 12917-1-AP (PLS3 Antibody) at dilution of 1:600 incubated at room temperature for 1.5 hours.



IP result of anti-PLS3(IP:12917-1-AP, 4ug; Detection:12917-1-AP 1:500) with A431 cells lysate 2640 ug.



Immunofluorescent analysis of (-20°C Ethanol) fixed A431 cells using PLS3 antibody (12917-1-AP) at dilution of 1:200 and CoraLite®488-Conjugated AffiniPure Goat Anti-Rabbit IgG(H+L).