

For Research Use Only

NFE2L1 Polyclonal antibody

Catalog Number: 12936-1-AP

Featured Product

14 Publications



Basic Information

Catalog Number:

12936-1-AP

Size:

150ul, Concentration: 1000 ug/ml by Nanodrop and 620 ug/ml by Bradford method using BSA as the standard;

Source:

Rabbit

Isotype:

IgG

Immunogen Catalog Number:

AG3916

GenBank Accession Number:

BC010623

GeneID (NCBI):

4779

UNIPROT ID:

Q14494

Full Name:

nuclear factor (erythroid-derived 2)-like 1

Calculated MW:

772 aa, 85 kDa

Observed MW:

65 kDa

Purification Method:

Antigen affinity purification

Recommended Dilutions:

WB 1:500-1:1000

IP 0.5-4.0 ug for 1.0-3.0 mg of total protein lysate

IHC 1:50-1:500

Applications

Tested Applications:

WB, IP, IHC, ELISA

Cited Applications:

WB, IF, IP, ChIP

Species Specificity:

human, mouse, rat

Cited Species:

human, mouse, rat

Note-IHC: suggested antigen retrieval with TE buffer pH 9.0; (*) Alternatively, antigen retrieval may be performed with citrate buffer pH 6.0

Positive Controls:

WB: mouse skeletal muscle tissue, Fetal mouse bone tissue, HeLa cells, HepG2 cells, Jurkat cells, K-562 cells

IP: mouse skeletal muscle tissue,

IHC: human breast cancer tissue, mouse brain tissue

Background Information

NFE2L1, also named as HBZ17, NRF1, TCF11 and LCR-F1, belongs to the bZIP family and CNC subfamily. It activates erythroid-specific, globin gene expression. NFE2L1 is involved in mediating ascorbic acid-induced osterix expression and osteoblast differentiation via binding to the antioxidant response element of the osterix promoter. NFE2L1, produced by osteoblasts, is involved in regulating osterix expression, osteoblast differentiation, and bone formation. (PMID:19887580). This antibody is a rabbit polyclonal antibody raised against a region of human NFE2L1.

Notable Publications

Author	Pubmed ID	Journal	Application
Zi-Chao Wang	36163178	Cell Death Dis	WB
Simeng Bao	34699923	Food Chem Toxicol	WB
Jia-Wen Shou	35093536	Free Radic Biol Med	WB

Storage

Storage:

Store at -20°C. Stable for one year after shipment.

Storage Buffer:

PBS with 0.02% sodium azide and 50% glycerol pH 7.3.

Aliquoting is unnecessary for -20°C storage

*** 20ul sizes contain 0.1% BSA

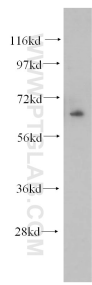
For technical support and original validation data for this product please contact:

T: 1 (888) 4PTGLAB (1-888-478-4522) (toll free in USA), or 1(312) 455-8498 (outside USA)

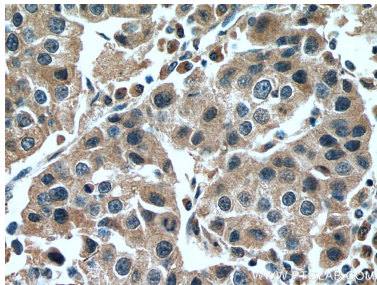
E: proteintech@ptglab.com
W: ptglab.com

This product is exclusively available under Proteintech Group brand and is not available to purchase from any other manufacturer.

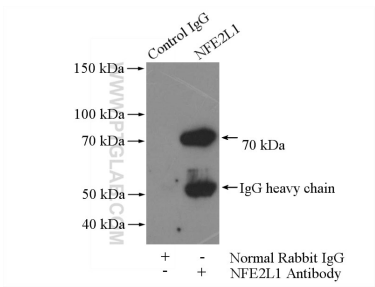
Selected Validation Data



mouse skeletal muscle tissue were subjected to SDS PAGE followed by western blot with 12936-1-AP (NFE2L1 antibody) at dilution of 1:500 incubated at room temperature for 1.5 hours.



Immunohistochemical analysis of paraffin-embedded human breast cancer tissue slide using 12936-1-AP (NFE2L1 antibody) at dilution of 1:200 (under 40x lens). Heat mediated antigen retrieval with Tris-EDTA buffer (pH 9.0).



IP result of anti-NFE2L1 (IP:12936-1-AP, 4ug; Detection:12936-1-AP 1:500) with mouse skeletal muscle tissue lysate 2200ug.