

For Research Use Only

PSME2 Polyclonal antibody

Catalog Number: 12937-2-AP **3 Publications**



Basic Information

Catalog Number: 12937-2-AP	GenBank Accession Number: BC019885	Purification Method: Antigen affinity purification
Size: 150ul, Concentration: 550 µg/ml by Nanodrop and 333 µg/ml by Bradford method using BSA as the standard;	GeneID (NCBI): 5721	Recommended Dilutions: IP 0.5-4.0 ug for IP and 1:500-1:1000 for WB
Source: Rabbit	Full Name: proteasome (prosome, macropain) activator subunit 2 (PA28 beta)	IHC 1:1000-1:4000 IF 1:10-1:100
Isotype: IgG	Calculated MW: 239 aa, 27 kDa	
Immunogen Catalog Number: AG3986	Observed MW: 27 kDa	

Applications

Tested Applications: IF, IHC, IP, WB, ELISA	Positive Controls: IP: MCF-7 cells, IHC: human kidney tissue, IF: MCF-7 cells,
Cited Applications: IF, IHC, WB	
Species Specificity: human, mouse, rat	
Cited Species: human, mouse	

Note-IHC: suggested antigen retrieval with TE buffer pH 9.0; (*) Alternatively, antigen retrieval may be performed with citrate buffer pH 6.0

Background Information

The principal function of the proteasome is targeted degradation of intracellular proteins. Activity of the 20S proteasome is controlled by regulatory complexes that bind to the ends of the cylindrical proteasome. 11S regulator (REG or PA28), is a complex of 28 kDa subunits that is thought to activate proteasomes toward the production of antigenic peptides. Human PSME1 and PSME2 genes encode the two proteasome activators PA28 alpha and beta, respectively, which have been implicated in antigen processing for loading class I MHC molecules. The PA28 activator complex enhances the generation of class I binding peptides by altering the cleavage pattern of the proteasome.

Notable Publications

Author	Pubmed ID	Journal	Application
Qing Li	36586643	Pharmacol Res	WB
Cen Wu	36583022	Front Genet	IHC
Brooke R D'Arcy	36854011	PLoS Biol	IF

Storage

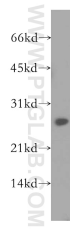
Storage:
Store at -20°C. Stable for one year after shipment.
Storage Buffer:
PBS with 0.02% sodium azide and 50% glycerol pH 7.3.
Aliquoting is unnecessary for -20°C storage

*** 20ul sizes contain 0.1% BSA

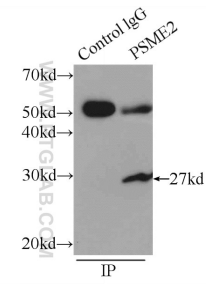
For technical support and original validation data for this product please contact:
T: 1 (888) 4PTGLAB (1-888-478-4522) (toll free in USA), or 1(312) 455-8498 (outside USA)
E: proteintech@ptglab.com
W: ptglab.com

This product is exclusively available under Proteintech Group brand and is not available to purchase from any other manufacturer.

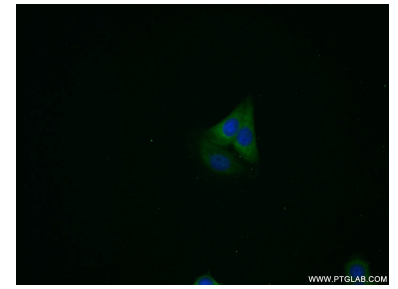
Selected Validation Data



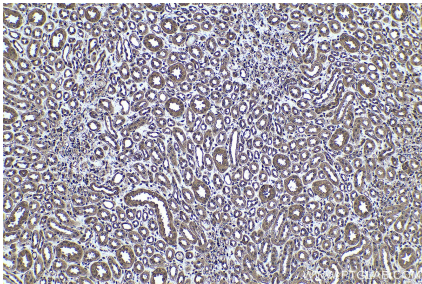
MCF7 cells were subjected to SDS PAGE followed by western blot with 12937-2-AP (PSME2 antibody) at dilution of 1:0 incubated at room temperature for 1.5 hours.



IP Result of anti-PSME2 (IP:12937-2-AP, 4ug; Detection:12937-2-AP 1:500) with MCF-7 cells lysate 2000ug.



Immunofluorescent analysis of MCF-7 cells using 12937-2-AP (PSME2 antibody) at dilution of 1:25 and Alexa Fluor 488-conjugated AffiniPure Goat Anti-Rabbit IgG(H+L).



Immunohistochemical analysis of paraffin-embedded human kidney tissue slide using 12937-2-AP (PSME2 antibody) at dilution of 1:2000 (under 10x lens). Heat mediated antigen retrieval with Tris-EDTA buffer (pH 9.0).