

For Research Use Only

CLASP2 Polyclonal antibody

Catalog Number: 12942-1-AP

1 Publications



Basic Information

Catalog Number: 12942-1-AP	GenBank Accession Number: BC029035	Purification Method: Antigen affinity purification
Size: 150ul , Concentration: 400 ug/ml by Nanodrop and 233 ug/ml by Bradford method using BSA as the standard;	GeneID (NCBI): 23122	Recommended Dilutions: WB 1:500-1:2000 IHC 1:50-1:500 IF-P 1:50-1:500 IF/ICC 1:50-1:500
Source: Rabbit	UNIPROT ID: O75122	
Isotype: IgG	Full Name: cytoplasmic linker associated protein 2	
Immunogen Catalog Number: AG4012	Calculated MW: 1294 aa, 141 kDa	
	Observed MW: 140-160 kDa	

Applications

Tested Applications: WB, IHC, IF/ICC, IF-P, ELISA	Positive Controls: WB : human brain tissue, HEK-293 cells
Cited Applications: WB	IHC : mouse brain tissue,
Species Specificity: human, mouse	IF-P : mouse brain tissue,
Cited Species: mouse	IF/ICC : HepG2 cells,
Note-IHC: suggested antigen retrieval with TE buffer pH 9.0; (*) Alternatively, antigen retrieval may be performed with citrate buffer pH 6.0	

Background Information

CLASP2 (CLIP-associating protein 2) is a brain specific protein belongs to CLASP family. CLASP1 and CLASP2 regulate microtubule plus-end dynamics in brain cortex. CLASP2 is required for the orientation of stabilized microtubules toward the leading edge. It may act at the cell cortex to enhance the frequency of rescue of depolymerizing microtubules by attaching their plus-ends to cortical platforms. Phosphorylation of CLASP2 by GSK3B may negatively regulate binding to microtubule lattices in lamella.

Notable Publications

Author	Pubmed ID	Journal	Application
Matsumoto Takumi T	23239117	J Bone Miner Res	WB

Storage

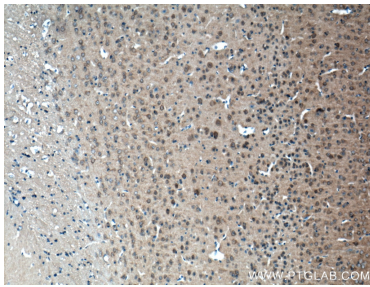
Storage:
Store at -20°C. Stable for one year after shipment.
Storage Buffer:
PBS with 0.02% sodium azide and 50% glycerol pH 7.3.
Aliquoting is unnecessary for -20°C storage

*** 20ul sizes contain 0.1% BSA

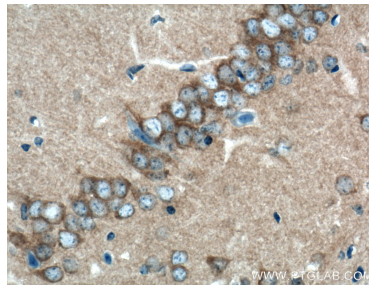
For technical support and original validation data for this product please contact:
T: 1 (888) 4PTGLAB (1-888-478-4522) (toll free in USA), or 1(312) 455-8498 (outside USA)
E: proteintech@ptglab.com
W: ptglab.com

This product is exclusively available under Proteintech Group brand and is not available to purchase from any other manufacturer.

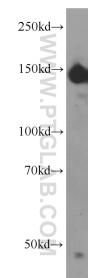
Selected Validation Data



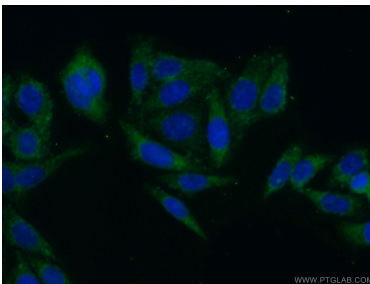
Immunohistochemical analysis of paraffin-embedded mouse brain tissue slide using 12942-1-AP (CLASP2 antibody) at dilution of 1:200 (under 10x lens). Heat mediated antigen retrieval with Tris-EDTA buffer (pH 9.0).



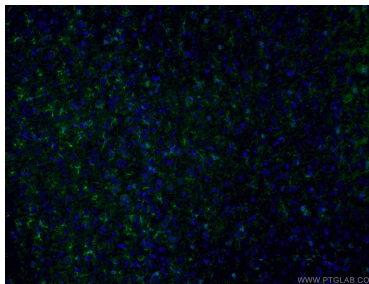
Immunohistochemical analysis of paraffin-embedded mouse brain tissue slide using 12942-1-AP (CLASP2 antibody) at dilution of 1:200 (under 40x lens). Heat mediated antigen retrieval with Tris-EDTA buffer (pH 9.0).



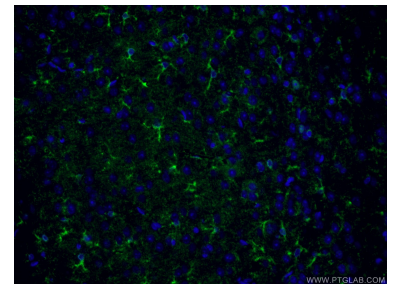
human brain tissue were subjected to SDS PAGE followed by western blot with 12942-1-AP (CLASP2 antibody) at dilution of 1:500 incubated at room temperature for 1.5 hours.



Immunofluorescent analysis of HepG2 cells using 12942-1-AP (CLASP2 antibody) at dilution of 1:50 and Alexa Fluor 488-conjugated AffiniPure Goat Anti-Rabbit IgG(H+L).



Immunofluorescent analysis of (4% PFA) fixed mouse brain tissue using 12942-1-AP (CLASP2 antibody) at dilution of 1:50 and Alexa Fluor 488-conjugated AffiniPure Goat Anti-Rabbit IgG(H+L).



Immunofluorescent analysis of (4% PFA) fixed mouse brain tissue using 12942-1-AP (CLASP2 antibody) at dilution of 1:50 and Alexa Fluor 488-conjugated AffiniPure Goat Anti-Rabbit IgG(H+L).