

For Research Use Only

# LIPA Polyclonal antibody

Catalog Number: 12956-1-AP

Featured Product

9 Publications



## Basic Information

### Catalog Number:

12956-1-AP

### Size:

150ul, Concentration: 500 ug/ml by Nanodrop;

### Source:

Rabbit

### Isotype:

IgG

### Immunogen Catalog Number:

AG3627

### GenBank Accession Number:

BC012287

### GeneID (NCBI):

3988

### UNIPROT ID:

P38571

### Full Name:

lipase A, lysosomal acid, cholesterol esterase

### Calculated MW:

399 aa, 45 kDa

### Observed MW:

45 kDa

### Purification Method:

Antigen affinity purification

### Recommended Dilutions:

WB 1:500-1:2000

IP 0.5-4.0 ug for 1.0-3.0 mg of total protein lysate

IHC 1:1000-1:4000

## Applications

### Tested Applications:

WB, IHC, IP, ELISA

### Cited Applications:

WB, IHC, IF, IP

### Species Specificity:

human, mouse, rat

### Cited Species:

human, mouse, rat, pig

**Note-IHC: suggested antigen retrieval with TE buffer pH 9.0; (\*) Alternatively, antigen retrieval may be performed with citrate buffer pH 6.0**

### Positive Controls:

WB : HT-1080 cells, HeLa cells, HEK-293 cells, HepG2 cells, RAW 264.7 cells, NIH/3T3 cells

IP : HT-1080 cells,

IHC : human colon cancer tissue,

## Background Information

Human acid lipase/cholesteryl esterase (LIPA) is a 46-kDa glycoprotein required for the lysosomal hydrolysis of cholesteryl esters and triglycerides that cells acquire through the receptor-mediated endocytosis of low-density lipoproteins (PMID:8432549). Defects in LIPA are the cause of Wolman disease (WOD) (PMID:8146180) and cholesteryl ester storage disease (CESD) (PMID:9633819). It has 2 isoforms produced by alternative splicing with the molecular weight of 45 kDa and 39 kDa. The full length protein has a signal peptide and several glycosylation sites.

## Notable Publications

Author	Pubmed ID	Journal	Application
Yangjun Yang	36432597	Nutrients	WB
Simone Carotti	34795230	Cell Death Dis	WB, IHC, IF, IP
Lin An	35679793	Phytomedicine	WB

## Storage

### Storage:

Store at -20°C. Stable for one year after shipment.

### Storage Buffer:

PBS with 0.02% sodium azide and 50% glycerol, pH7.3

Aliquoting is unnecessary for -20°C storage

\*\*\* 20ul sizes contain 0.1% BSA

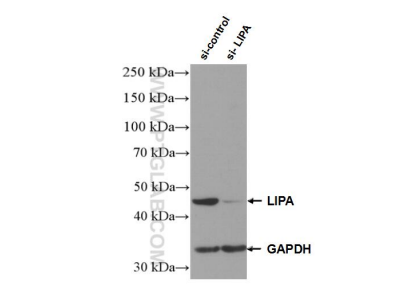
For technical support and original validation data for this product please contact:

T: 1 (888) 4PTGLAB (1-888-478-4522) (toll free in USA), or 1(312) 455-8498 (outside USA)

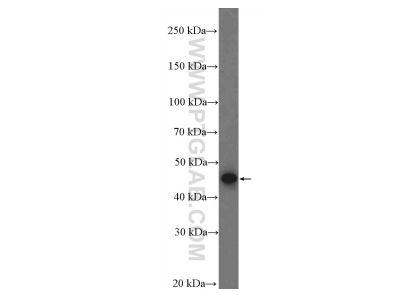
E: proteintech@ptglab.com  
W: ptglab.com

This product is exclusively available under Proteintech Group brand and is not available to purchase from any other manufacturer.

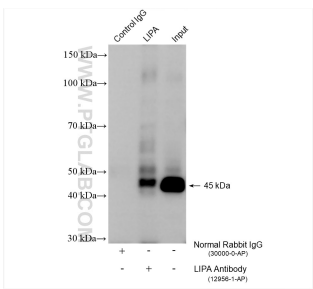
Selected Validation Data



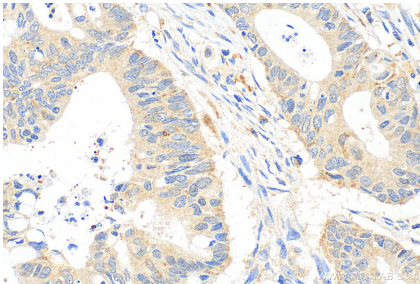
WB result of LIPA antibody (12956-1-AP; 1:1000; incubated at room temperature for 1.5 hours) with sh-Control and sh-LIPA transfected HEK-293 cells.



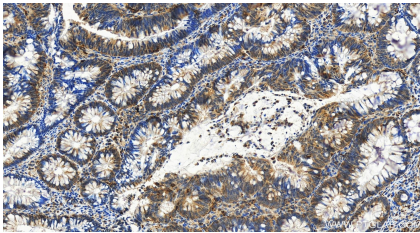
HT-1080 cells were subjected to SDS PAGE followed by western blot with 12956-1-AP (LIPA Antibody) at dilution of 1:1000 incubated at room temperature for 1.5 hours.



IP result of anti-LIPA (IP:12956-1-AP, 4ug; Detection:12956-1-AP 1:2000) with HT-1080 cells lysate 3600 ug.



Immunohistochemical analysis of paraffin-embedded human colon cancer tissue slide using 12956-1-AP (LIPA antibody) at dilution of 1:2000 (under 40x lens). Heat mediated antigen retrieval with Tris-EDTA buffer (pH 9.0).



Immunohistochemical analysis of paraffin-embedded human colon cancer tissue slide using 12956-1-AP (LIPA antibody) at dilution of 1:2000 (under 20x lens). Heat mediated antigen retrieval with Tris-EDTA buffer (pH 9.0).