

For Research Use Only

DRP1 (C-terminal) Polyclonal antibody

Catalog Number:12957-1-AP

Featured Product

281 Publications



Basic Information

Catalog Number:

12957-1-AP

Size:

150ul , Concentration: 1000 ug/ml by Nanodrop;

Source:

Rabbit

Isotype:

IgG

Immunogen Catalog Number:

AG3644

GenBank Accession Number:

BC024590

GeneID (NCBI):

10059

UNIPROT ID:

O00429

Full Name:

dynamin 1-like

Calculated MW:

736 aa, 82 kDa

Observed MW:

75-80 kDa

Purification Method:

Antigen affinity purification

Recommended Dilutions:

WB 1:2000-1:10000

IP 0.5-4.0 ug for 1.0-3.0 mg of total protein lysate

IHC 1:50-1:500

IF/ICC 1:250-1:1000

Applications

Tested Applications:

WB, IHC, IF/ICC, FC (Intra), IP, ELISA

Cited Applications:

WB, IHC, IF, IP, CoIP

Species Specificity:

human, mouse, rat

Cited Species:

human, mouse, rat, monkey, chicken, zebrafish, bovine, hamster, goat, duck

Note-IHC: suggested antigen retrieval with TE buffer pH 9.0; (*) Alternatively, antigen retrieval may be performed with citrate buffer pH 6.0

Positive Controls:

WB : mouse brain tissue, HeLa cells, A549 cells, rat brain tissue, DU 145 cells, HCT 116 cells, HepG2 cells, NIH/3T3 cells

IP : mouse brain tissue,

IHC : mouse cerebellum tissue,

IF/ICC : HeLa cells,

Background Information

DNM1L(Dynamin-1-like protein) , also known as dynamin-related protein 1 (DRP1), belongs to the dynamin family of large GTPases that mediate membrane remodeling during a variety of cellular processes. DNM1L has an important role in the division of growing mitochondria and peroxisomes and also mediates outer mitochondrial membrane fission in mammalian cells. DNM1L is ubiquitously expressed with abundant expression in skeletal muscle, heart, kidney and brain.Variable isoforms of DNM1L have been reported in a tissue-specific manner due to the alternative splicing.

Notable Publications

Author	Pubmed ID	Journal	Application
Wenliang Zhang	34580406	Sci Rep	WB
Xinyao Tian	36163170	Cell Death Dis	WB
Jinghua Du	29158819	Theranostics	WB

Storage

Storage:

Store at -20°C. Stable for one year after shipment.

Storage Buffer:

PBS with 0.02% sodium azide and 50% glycerol, pH7.3

Aliquoting is unnecessary for -20°C storage

*** 20ul sizes contain 0.1% BSA

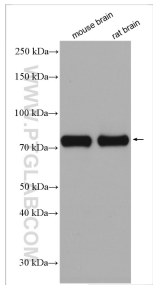
For technical support and original validation data for this product please contact:

T: 1 (888) 4PTGLAB (1-888-478-4522) (toll free in USA), or 1(312) 455-8498 (outside USA)

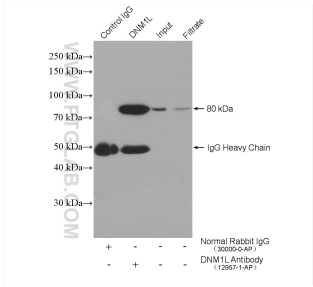
E: proteintech@ptglab.com
W: ptglab.com

This product is exclusively available under Proteintech Group brand and is not available to purchase from any other manufacturer.

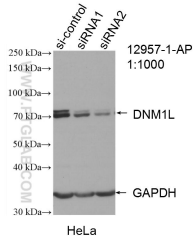
Selected Validation Data



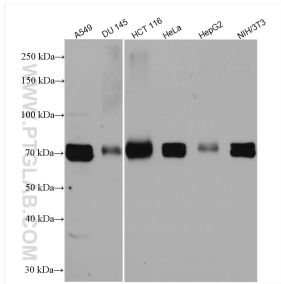
Various lysates were subjected to SDS PAGE followed by western blot with 12957-1-AP (DRP1 (C-terminal) antibody) at dilution of 1:5000 incubated at room temperature for 1.5 hours.



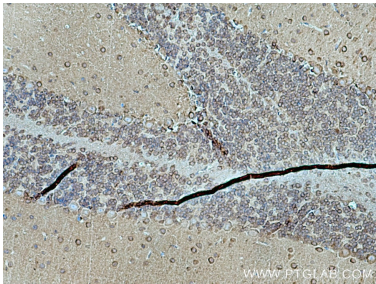
IP result of anti-DRP1 (C-terminal) (IP:12957-1-AP, 4ug; Detection:12957-1-AP 1:1000) with mouse brain tissue lysate 2400 ug.



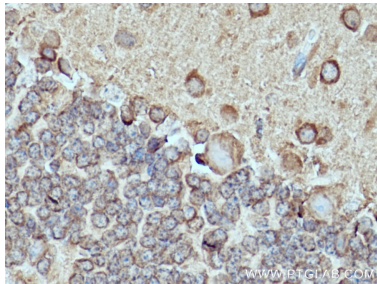
WB result of DRP1 (C-terminal) antibody (12957-1-AP; 1:1000; incubated at room temperature for 1.5 hours) with sh-Control and sh-DRP1 (C-terminal) transfected HeLa cells.



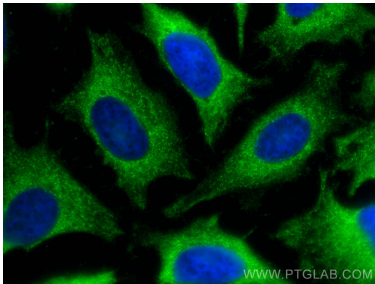
Various lysates were subjected to SDS PAGE followed by western blot with 12957-1-AP (DRP1 (C-terminal) antibody) at dilution of 1:5000 incubated at room temperature for 1.5 hours.



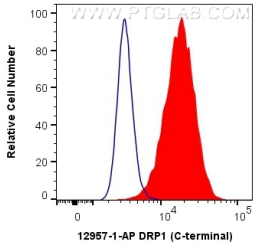
Immunohistochemical analysis of paraffin-embedded mouse cerebellum tissue slide using 12957-1-AP (DRP1 (C-terminal) antibody) at dilution of 1:200 (under 10x lens). Heat mediated antigen retrieval with Tris-EDTA buffer (pH 9.0).



Immunohistochemical analysis of paraffin-embedded mouse cerebellum tissue slide using 12957-1-AP (DRP1 (C-terminal) antibody) at dilution of 1:200 (under 40x lens). Heat mediated antigen retrieval with Tris-EDTA buffer (pH 9.0).



Immunofluorescent analysis of (-20°C Methanol) fixed HeLa cells using DRP1 (C-terminal) antibody (12957-1-AP) at dilution of 1:500 and CoraLite®488-Conjugated AffiniPure Goat Anti-Rabbit IgG(H+L).



1X10⁶ HeLa cells were intracellularly stained with 0.4 ug Anti-Human DRP1 (C-terminal) (12957-1-AP) and CoraLite®488-Conjugated AffiniPure Goat Anti-Rabbit IgG(H+L) at dilution 1:1000 (red), or 0.4 ug Control Antibody. Cells were fixed with 4% PFA and permeabilized with Flow Cytometry Perm Buffer (PF00011-C).