

For Research Use Only

# EME1 Polyclonal antibody

Catalog Number: 12975-1-AP



## Basic Information

**Catalog Number:**

12975-1-AP

**Size:**

150ul , Concentration: 240 ug/ml by Nanodrop and 247 ug/ml by Bradford method using BSA as the standard;

**Source:**

Rabbit

**Isotype:**

IgG

**Immunogen Catalog Number:**

AG3580

**GenBank Accession Number:**

BC016470

**GeneID (NCBI):**

146956

**UNIPROT ID:**

Q96AY2

**Full Name:**

essential meiotic endonuclease 1 homolog 1 (S. pombe)

**Calculated MW:**

583 aa, 65 kDa

**Observed MW:**

65 kDa

**Purification Method:**

Antigen affinity purification

**Recommended Dilutions:**

WB 1:500-1:1000

## Applications

**Tested Applications:**

WB, ELISA

**Species Specificity:**

human, mouse, rat

**Positive Controls:**

WB : A375 cells, human liver tissue

## Storage

**Storage:**

Store at -20°C. Stable for one year after shipment.

**Storage Buffer:**

PBS with 0.02% sodium azide and 50% glycerol pH 7.3.

Aliquoting is unnecessary for -20°C storage

\*\*\* 20ul sizes contain 0.1% BSA

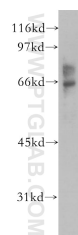
For technical support and original validation data for this product please contact:

T: 1 (888) 4PTGLAB (1-888-478-4522) (toll free in USA), or 1(312) 455-8498 (outside USA)

E: [proteintech@ptglab.com](mailto:proteintech@ptglab.com)  
W: [ptglab.com](http://ptglab.com)

This product is exclusively available under Proteintech Group brand and is not available to purchase from any other manufacturer.

## Selected Validation Data



A375 cells were subjected to SDS PAGE followed by western blot with 12975-1-AP (EME1 antibody) at dilution of 1:500 incubated at room temperature for 1.5 hours.