

TPTE Polyclonal antibody

Catalog Number: 12982-1-AP

Basic Information

Catalog Number: 12982-1-AP	GenBank Accession Number: BC028719	Purification Method: Antigen affinity purification
Size: 150ul , Concentration: 260 ug/ml by Nanodrop and 247 ug/ml by Bradford method using BSA as the standard;	GeneID (NCBI): 7179	Recommended Dilutions: WB 1:500-1:2000
Source: Rabbit	UNIPROT ID: P56180	IHC 1:20-1:200
Isotype: IgG	Full Name: transmembrane phosphatase with tensin homology	IF/ICC 1:10-1:100
Immunogen Catalog Number: AG3606	Calculated MW: 62 kDa, 64 kDa	
	Observed MW: 62 kDa, 64 kDa	

Applications

Tested Applications: WB, IHC, IF/ICC, ELISA	Positive Controls:
Species Specificity: human, mouse	WB : HepG2 cells, HEK-293 cells, human testis tissue, BxPC-3 cells, mouse testis tissue
Note-IHC: suggested antigen retrieval with TE buffer pH 9.0; (*) Alternatively, antigen retrieval may be performed with citrate buffer pH 6.0	IHC : human testis tissue,
	IF/ICC : BxPC-3 cells,

Background Information

TPTE(Transmembrane phosphatase with tensin homology) is also named as CT44, BJ-HCC-5 and belongs to the non receptor class of the protein-tyrosine phosphatase family. The gene encodes a predicted polypeptide of 551 amino acids with at least 2 potential transmembrane domains and a tyrosine phosphatase motif. TPTE may be involved in the signal transduction pathways of the endocrine or spermatogenic function of the testis(PMID:10598804). It is putatively involved in linking the cell membrane to cytoskeleton. This protein is very similar in sequence to PTEN through the phosphatase and C2 domains, but lacks a PDZ binding motif and an extensively phosphorylated C-terminal tail(PMID:17240336). It has 4 isoforms produced by alternative splicing.

Storage

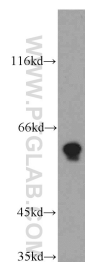
Storage:
Store at -20°C. Stable for one year after shipment.
Storage Buffer:
PBS with 0.02% sodium azide and 50% glycerol pH 7.3.
Aliquoting is unnecessary for -20°C storage

*** 20ul sizes contain 0.1% BSA

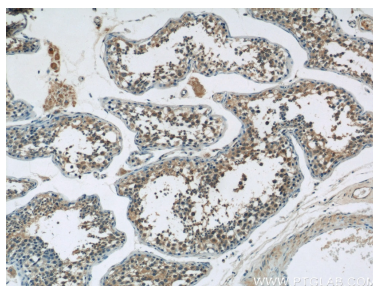
For technical support and original validation data for this product please contact:
T: 1 (888) 4PTGLAB (1-888-478-4522) (toll free in USA), or 1(312) 455-8498 (outside USA)
E: proteintech@ptglab.com
W: ptglab.com

This product is exclusively available under Proteintech Group brand and is not available to purchase from any other manufacturer.

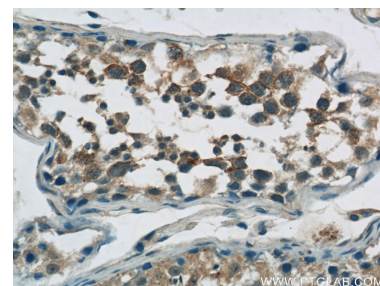
Selected Validation Data



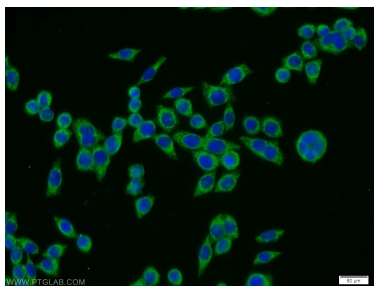
HepG2 cells were subjected to SDS PAGE followed by western blot with 12982-1-AP (TPTE antibody) at dilution of 1:500 incubated at room temperature for 1.5 hours.



Immunohistochemical analysis of paraffin-embedded human testis tissue slide using 12982-1-AP (TPTE Antibody) at dilution of 1:50 (under 10x lens).



Immunohistochemical analysis of paraffin-embedded human testis tissue slide using 12982-1-AP (TPTE Antibody) at dilution of 1:50 (under 40x lens).



Immunofluorescent analysis of BxPC-3 cells using 12982-1-AP (TPTE antibody) at dilution of 1:25 and Alexa Fluor 488-conjugated Goat Anti-Rabbit IgG(H+L).