

For Research Use Only

GSPT2 Polyclonal antibody

Catalog Number: 12989-1-AP

5 Publications



Basic Information

Catalog Number:

12989-1-AP

Size:

150ul, Concentration: 400 ug/ml by Nanodrop and 247 ug/ml by Bradford method using BSA as the standard;

Source:

Rabbit

Isotype:

IgG

Immunogen Catalog Number:

AG3641

GenBank Accession Number:

BC036077

GeneID (NCBI):

23708

UNIPROT ID:

Q8IYD1

Full Name:

G1 to S phase transition 2

Calculated MW:

628 aa, 69 kDa

Observed MW:

69-75 kDa

Purification Method:

Antigen affinity purification

Recommended Dilutions:

WB 1:1000-1:4000

IHC 1:20-1:200

IF/ICC 1:200-1:800

Applications

Tested Applications:

WB, IHC, IF/ICC, ELISA

Cited Applications:

WB, IF

Species Specificity:

human, mouse, rat

Cited Species:

human, mouse

Note-IHC: suggested antigen retrieval with TE buffer pH 9.0; (*) Alternatively, antigen retrieval may be performed with citrate buffer pH 6.0

Positive Controls:

WB : MCF-7 cells, NIH/3T3 cells, PC-3 cells

IHC : human colon cancer tissue,

IF/ICC : MCF-7 cells,

Background Information

GSPT2, also named as Eukaryotic peptide chain release factor GTP-binding subunit ERF3B or G1 to S phase transition protein 2 homolog, is a 628 amino acid protein, which belongs to the GTP-binding elongation factor family. ERF3 subfamily. GSPT2 localizes in the cytoplasm and is highly expressed in IUEC stage II colorectal cancer (CRC). GSPT2 is involved in translation termination in response to the termination codons UAA, UAG and UGA and may play a role as a potent stimulator of the release factor activity of ETF1. It may play a role in cell cycle progression.

Notable Publications

Author	Pubmed ID	Journal	Application
Zhengrong Xu	30272252	Int J Mol Med	
Yulin Sun	35589723	Nat Commun	
Hong Su	21726813	Mol Cell	WB

Storage

Storage:

Store at -20°C. Stable for one year after shipment.

Storage Buffer:

PBS with 0.02% sodium azide and 50% glycerol pH 7.3.

Aliquoting is unnecessary for -20°C storage

*** 20ul sizes contain 0.1% BSA

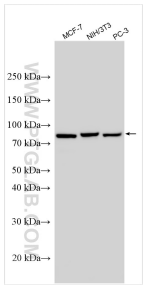
For technical support and original validation data for this product please contact:

T: 1 (888) 4PTGLAB (1-888-478-4522) (toll free in USA), or 1(312) 455-8498 (outside USA)

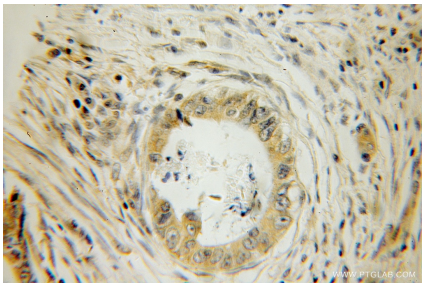
E: proteintech@ptglab.com
W: ptglab.com

This product is exclusively available under Proteintech Group brand and is not available to purchase from any other manufacturer.

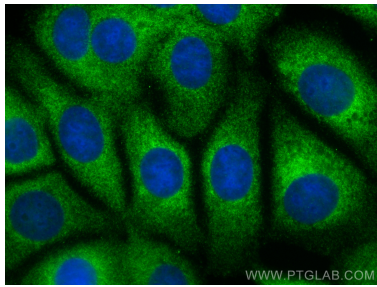
Selected Validation Data



Various lysates were subjected to SDS PAGE followed by western blot with 12989-1-AP (GSPT2 antibody) at dilution of 1:2000 incubated at room temperature for 1.5 hours.



Immunohistochemical analysis of paraffin-embedded human colon cancer using 12989-1-AP (GSPT2 antibody) at dilution of 1:100 (under 10x lens).



Immunofluorescent analysis of (-20°C Methanol) fixed MCF-7 cells using GSPT2 antibody (12989-1-AP) at dilution of 1:400 and CoraLite®488-Conjugated Goat Anti-Rabbit IgG(H+L) (SA00013-2).