

For Research Use Only

# ELMOD2 Polyclonal antibody

Catalog Number: 13027-1-AP



## Basic Information

### Catalog Number:

13027-1-AP

### Size:

150ul, Concentration: 550 ug/ml by Nanodrop and 400 ug/ml by Bradford method using BSA as the standard;

### Source:

Rabbit

### Isotype:

IgG

### Immunogen Catalog Number:

AG3653

### GenBank Accession Number:

BC015168

### GeneID (NCBI):

255520

### UNIPROT ID:

Q8IZ81

### Full Name:

ELMO/CED-12 domain containing 2

### Calculated MW:

293 aa, 32 kDa

### Observed MW:

32 kDa

### Purification Method:

Antigen affinity purification

### Recommended Dilutions:

WB 1:1000-1:4000

IP 0.5-4.0 ug for 1.0-3.0 mg of total protein lysate

IHC 1:20-1:200

## Applications

### Tested Applications:

WB, IP, IHC, ELISA

### Species Specificity:

human

**Note-IHC: suggested antigen retrieval with TE buffer pH 9.0; (\*) Alternatively, antigen retrieval may be performed with citrate buffer pH 6.0**

### Positive Controls:

**WB** : A549 cells, HeLa cells, HepG2 cells, Jurkat cells, human placenta tissue

**IP** : A549 cells,

**IHC** : human pancreas cancer tissue,

## Storage

### Storage:

Store at -20°C. Stable for one year after shipment.

### Storage Buffer:

PBS with 0.02% sodium azide and 50% glycerol pH 7.3.

Aliquoting is unnecessary for -20°C storage

\*\*\* 20ul sizes contain 0.1% BSA

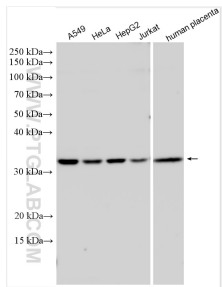
For technical support and original validation data for this product please contact:

T: 1 (888) 4PTGLAB (1-888-478-4522) (toll free in USA), or 1(312) 455-8498 (outside USA)

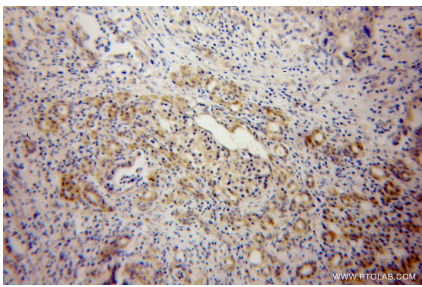
E: [proteintech@ptglab.com](mailto:proteintech@ptglab.com)  
W: [ptglab.com](http://ptglab.com)

This product is exclusively available under Proteintech Group brand and is not available to purchase from any other manufacturer.

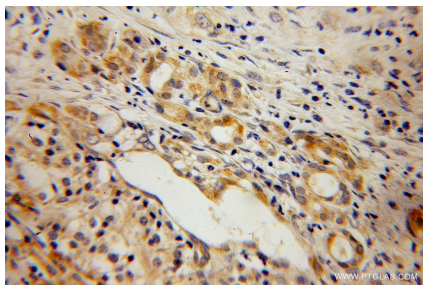
Selected Validation Data



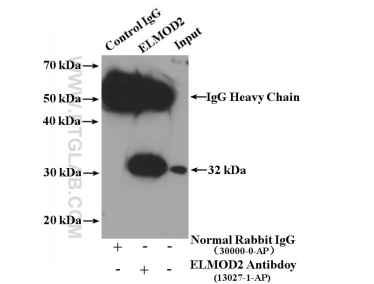
Various lysates were subjected to SDS PAGE followed by western blot with 13027-1-AP (ELMOD2 antibody) at dilution of 1:2000 incubated at room temperature for 1.5 hours.



Immunohistochemical analysis of paraffin-embedded human pancreas cancer using 13027-1-AP (ELMOD2 antibody) at dilution of 1:100 (under 10x lens).



Immunohistochemical analysis of paraffin-embedded human pancreas cancer using 13027-1-AP (ELMOD2 antibody) at dilution of 1:100 (under 40x lens).



IP result of anti-ELMOD2 (IP:13027-1-AP, 4ug; Detection:13027-1-AP 1:300) with A549 cells lysate 2000ug.