

For Research Use Only

CTHF18 Polyclonal antibody

Catalog Number: 13030-1-AP



Basic Information

Catalog Number:

13030-1-AP

Size:

150ul , Concentration: 600 ug/ml by Nanodrop;

Source:

Rabbit

Isotype:

IgG

Immunogen Catalog Number:

AG3672

GenBank Accession Number:

BC018184

GeneID (NCBI):

63922

UNIPROT ID:

Q8WVB6

Full Name:

CTF18, chromosome transmission fidelity factor 18 homolog (S. cerevisiae)

Calculated MW:

1184 aa, 129 kDa

Observed MW:

110 kDa

Purification Method:

Antigen affinity purification

Recommended Dilutions:

WB 1:500-1:1000

IHC 1:20-1:200

Applications

Tested Applications:

WB, IHC, ELISA

Species Specificity:

human, mouse, rat

Note-IHC: suggested antigen retrieval with TE buffer pH 9.0; (*) Alternatively, antigen retrieval may be performed with citrate buffer pH 6.0

Positive Controls:

WB : HeLa cells, Y79 cells

IHC : human medulloblastoma tissue,

Storage

Storage:

Store at -20°C. Stable for one year after shipment.

Storage Buffer:

PBS with 0.02% sodium azide and 50% glycerol pH 7.3.

Aliquoting is unnecessary for -20°C storage

*** 20ul sizes contain 0.1% BSA

For technical support and original validation data for this product please contact:

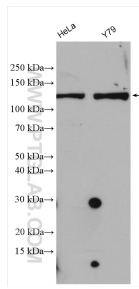
T: 1 (888) 4PTGLAB (1-888-478-4522) (toll free in USA), or 1(312) 455-8498 (outside USA)

E: proteintech@ptglab.com

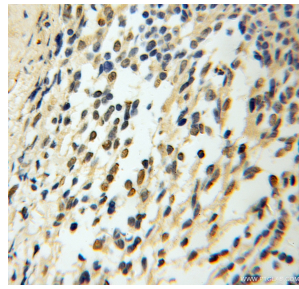
W: ptglab.com

This product is exclusively available under Proteintech Group brand and is not available to purchase from any other manufacturer.

Selected Validation Data



Various lysates were subjected to SDS PAGE followed by western blot with 13030-1-AP (CHTF18 antibody) at dilution of 1:800 incubated at room temperature for 1.5 hours.



Immunohistochemical analysis of paraffin-embedded human medulloblastoma using 13030-1-AP (CHTF18 antibody) at dilution of 1:100 (under 10x lens).