

For Research Use Only

# SACM1L Polyclonal antibody

Catalog Number: 13033-1-AP

Featured Product

18 Publications



## Basic Information

### Catalog Number:

13033-1-AP

### Size:

150ul, Concentration: 550 ug/ml by Nanodrop;

### Source:

Rabbit

### Isotype:

IgG

### Immunogen Catalog Number:

AG3682

### GenBank Accession Number:

BC016559

### GeneID (NCBI):

22908

### UNIPROT ID:

Q9NTJ5

### Full Name:

SAC1 suppressor of actin mutations 1-like (yeast)

### Calculated MW:

587 aa, 67 kDa

### Observed MW:

60-67 kDa

### Purification Method:

Antigen affinity purification

### Recommended Dilutions:

WB 1:500-1:2000

IP 0.5-4.0 ug for 1.0-3.0 mg of total protein lysate

IHC 1:20-1:200

IF/ICC 1:50-1:500

## Applications

### Tested Applications:

WB, IHC, IF/ICC, IP, ELISA

### Cited Applications:

WB, IF, IP

### Species Specificity:

human, mouse, rat

### Cited Species:

human, mouse, rat

**Note-IHC: suggested antigen retrieval with TE buffer pH 9.0; (\*) Alternatively, antigen retrieval may be performed with citrate buffer pH 6.0**

### Positive Controls:

WB : human kidney tissue, A549 cells, mouse kidney tissue, mouse lung tissue, human brain tissue

IP : mouse kidney tissue,

IHC : human brain tissue, human heart tissue

IF/ICC : A549 cells,

## Background Information

SACM1L(Suppressor of actin mutations 1-like protein) is also named KIAA0851. It is a phosphoinositide phosphatase that hydrolyzes PtdIns3P and PtdIns4P and has low activity towards PtdIns(3,5)P2.

## Notable Publications

Author	Pubmed ID	Journal	Application
Jochen Schwenk	31604597	Neuron	WB
Ying Gao	36280710	Cell Res	WB
Yuichi Wakana	33156328	J Cell Biol	WB

## Storage

### Storage:

Store at -20°C. Stable for one year after shipment.

### Storage Buffer:

PBS with 0.02% sodium azide and 50% glycerol pH 7.3.

Aliquoting is unnecessary for -20°C storage

\*\*\* 20ul sizes contain 0.1% BSA

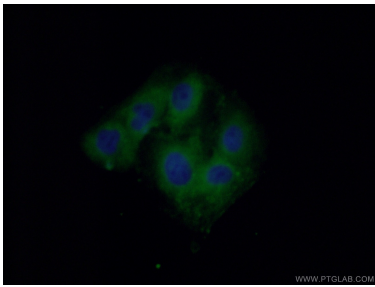
For technical support and original validation data for this product please contact:

T: 1 (888) 4PTGLAB (1-888-478-4522) (toll free in USA), or 1(312) 455-8498 (outside USA)

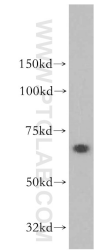
E: [proteintech@ptglab.com](mailto:proteintech@ptglab.com)  
W: [ptglab.com](http://ptglab.com)

This product is exclusively available under Proteintech Group brand and is not available to purchase from any other manufacturer.

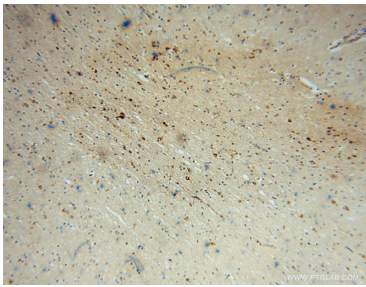
Selected Validation Data



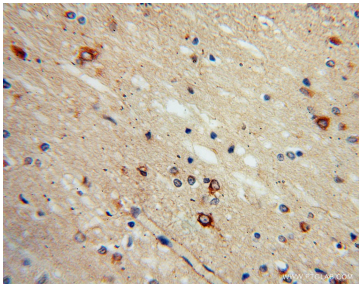
Immunofluorescent analysis of (-20°C Ethanol) fixed A549 cells using 13033-1-AP (SACM1L antibody) at dilution of 1:50 and Alexa Fluor 488-conjugated AffiniPure Goat Anti-Rabbit IgG(H+L).



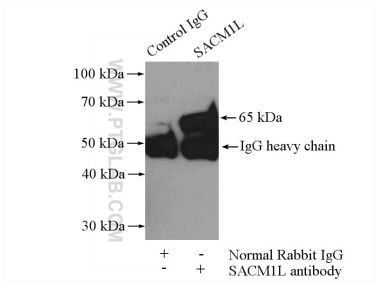
human kidney tissue were subjected to SDS PAGE followed by western blot with 13033-1-AP (SACM1L antibody) at dilution of 1:1000 incubated at room temperature for 1.5 hours.



Immunohistochemical analysis of paraffin-embedded human brain using 13033-1-AP (SACM1L antibody) at dilution of 1:100 (under 10x lens).



Immunohistochemical analysis of paraffin-embedded human brain using 13033-1-AP (SACM1L antibody) at dilution of 1:100 (under 40x lens).



IP result of anti-SACM1L (IP:13033-1-AP, 4ug; Detection:13033-1-AP 1:1000) with mouse kidney tissue lysate 4000ug.