

Claudin 1 Polyclonal antibody

Catalog Number: 13050-1-AP

Featured Product

213 Publications

Basic Information

Catalog Number: 13050-1-AP	GenBank Accession Number: BC012471	Purification Method: Antigen affinity purification
Size: 150ul , Concentration: 600 µg/ml by Nanodrop;	GeneID (NCBI): 9076	Recommended Dilutions: WB 1:1000-1:8000 IHC 1:50-1:500 IF 1:1000-1:4000
Source: Rabbit	Full Name: claudin 1	
Isotype: IgG	Calculated MW: 211 aa, 23 kDa	
Immunogen Catalog Number: AG3713	Observed MW: 20-23 kDa	

Applications

Tested Applications: IF, IHC, WB, ELISA	Positive Controls:
Cited Applications: IF, IHC, WB	WB: A431 cells, mouse skin tissue, mouse thymus tissue, mouse liver tissue, rat skin tissue, A549 cells, HUVEC cells
Species Specificity: human, mouse, rat, canine	IHC: human cervical cancer tissue, human skin cancer tissue, mouse skin tissue, human oesophagus cancer tissue, human malignant melanoma tissue
Cited Species: human, goat, chicken, rat, sheep, mouse, pig, canine, bovine	IF: HUVEC cells, MDCK cells
Note-IHC: suggested antigen retrieval with TE buffer pH 9.0; (*) Alternatively, antigen retrieval may be performed with citrate buffer pH 6.0	

Background Information

Claudins are a family of proteins that are the most important components of the tight junctions, where they establish the paracellular barrier that controls the flow of molecules in the intercellular space between the cells of an epithelium. 23 claudins have been identified. They are small (20-27 kilodalton (kDa)) proteins with very similar structure. They have four transmembrane domains, with the N-terminus and the C-terminus in the cytoplasm. Claudin-1 is expressed primarily in keratinocytes and normal mammary epithelial cells.

Notable Publications

Author	Pubmed ID	Journal	Application
Yuanyuan Li	33003577	Mar Drugs	WB
Zhongwei Xin	30267473	Thorac Cancer	WB
Ruizhi Hu	34977384	Anim Nutr	IHC

Storage

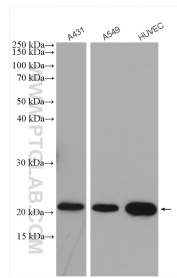
Storage:
Store at -20°C. Stable for one year after shipment.
Storage Buffer:
PBS with 0.02% sodium azide and 50% glycerol pH 7.3.
Aliquoting is unnecessary for -20°C storage

*** 20ul sizes contain 0.1% BSA

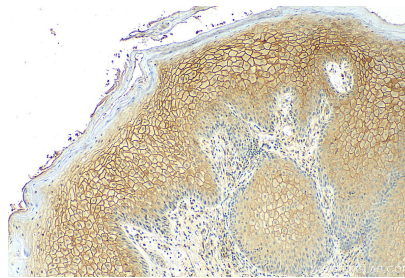
For technical support and original validation data for this product please contact:
T: 1 (888) 4PTGLAB (1-888-478-4522) (toll free in USA), or 1(312) 455-8498 (outside USA)
E: proteintech@ptglab.com
W: ptglab.com

This product is exclusively available under Proteintech Group brand and is not available to purchase from any other manufacturer.

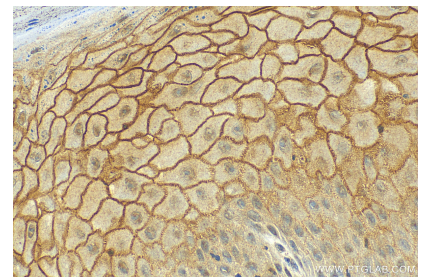
Selected Validation Data



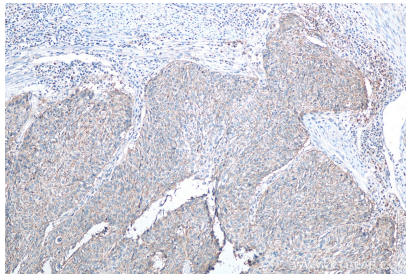
Various lysates were subjected to SDS PAGE followed by western blot with 13050-1-AP (Claudin 1 antibody) at dilution of 1:4000 incubated at room temperature for 1.5 hours.



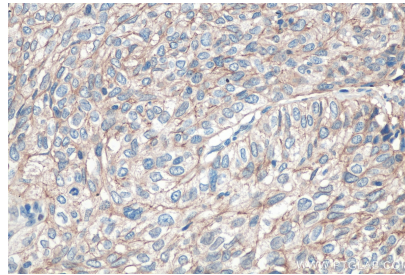
Immunohistochemical analysis of paraffin-embedded human skin cancer tissue slide using 13050-1-AP (Claudin 1 antibody) at dilution of 1:1000 (under 10x lens). Heat mediated antigen retrieval with Tris-EDTA buffer (pH 9.0).



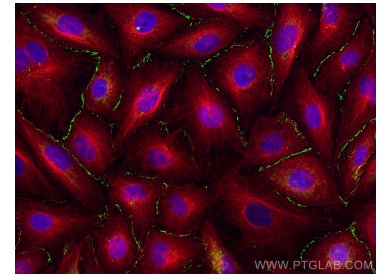
Immunohistochemical analysis of paraffin-embedded human skin cancer tissue slide using 13050-1-AP (Claudin 1 antibody) at dilution of 1:1000 (under 40x lens). Heat mediated antigen retrieval with Tris-EDTA buffer (pH 9.0).



Immunohistochemical analysis of paraffin-embedded human cervical cancer tissue slide using 13050-1-AP (Claudin 1 antibody) at dilution of 1:200 (under 10x lens). Heat mediated antigen retrieval with Tris-EDTA buffer (pH 9.0).



Immunohistochemical analysis of paraffin-embedded human cervical cancer tissue slide using 13050-1-AP (Claudin 1 antibody) at dilution of 1:200 (under 40x lens). Heat mediated antigen retrieval with Tris-EDTA buffer (pH 9.0).



Immunofluorescent analysis of (4% PFA) fixed HUVEC cells using Claudin 1 antibody (13050-1-AP) at dilution of 1:2000 and CoraLite®488-Conjugated AffiniPure Goat Anti-Rabbit IgG(H+L), Alpha Tubulin antibody (66031-1-Ig, Clone: 1E4C11, red).