

For Research Use Only

ASPRV1 Polyclonal antibody

Catalog Number: 13052-1-AP



Basic Information

Catalog Number: 13052-1-AP	GenBank Accession Number: BC031997	Purification Method: Antigen affinity purification
Size: 150ul , Concentration: 750 µg/ml by Nanodrop and 353 µg/ml by Bradford method using BSA as the standard;	GeneID (NCBI): 151516	Recommended Dilutions: WB 1:500-1:2000
Source: Rabbit	Full Name: aspartic peptidase, retroviral-like 1	
Isotype: IgG	Calculated MW: 343 aa, 37 kDa	
Immunogen Catalog Number: AG3719	Observed MW: 28 kDa, 37 kDa	

Applications

Tested Applications: WB, ELISA	Positive Controls: WB : mouse skin tissue, mouse brain tissue
Species Specificity: human, mouse, rat	

Background Information

The human retroviral-like aspartic protease 1 (ASPRV1) is a mammalian retroviral-like enzyme that catalyzes a critical proteolytic step during epidermal differentiation; therefore, it is also referred to as skin-specific aspartic protease (SASPase).

Storage

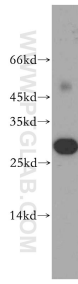
Storage:
Store at -20°C. Stable for one year after shipment.
Storage Buffer:
PBS with 0.02% sodium azide and 50% glycerol pH 7.3.
Aliquoting is unnecessary for -20°C storage

*** 20ul sizes contain 0.1% BSA

For technical support and original validation data for this product please contact:
T: 1 (888) 4PTGLAB (1-888-478-4522) (toll free in USA), or 1(312) 455-8498 (outside USA) E: proteintech@ptglab.com W: ptglab.com

This product is exclusively available under Proteintech Group brand and is not available to purchase from any other manufacturer.

Selected Validation Data



mouse skin tissue were subjected to SDS PAGE followed by western blot with 13052-1-AP (ASPRV1 antibody) at dilution of 1:300 incubated at room temperature for 1.5 hours.