

For Research Use Only

PFDN2 Polyclonal antibody

Catalog Number: 13053-1-AP



Basic Information

Catalog Number:

13053-1-AP

Size:

150ul , Concentration: 450 ug/ml by Nanodrop and 233 ug/ml by Bradford method using BSA as the standard;

Source:

Rabbit

Isotype:

IgG

Immunogen Catalog Number:

AG3720

GenBank Accession Number:

BC012464

GeneID (NCBI):

5202

UNIPROT ID:

Q9UHV9

Full Name:

prefoldin subunit 2

Calculated MW:

154 aa, 17 kDa

Observed MW:

17-20 kDa

Purification Method:

Antigen affinity purification

Recommended Dilutions:

WB 1:200-1:1000

IHC 1:20-1:200

IF/ICC 1:20-1:200

Applications

Tested Applications:

WB, IHC, IF/ICC, ELISA

Species Specificity:

human, mouse

Note-IHC: suggested antigen retrieval with TE buffer pH 9.0; (*) Alternatively, antigen retrieval may be performed with citrate buffer pH 6.0

Positive Controls:

WB : L02 cells, Neuro-2a cells

IHC : human lung cancer tissue, human liver cancer tissue

IF/ICC : L02 cells,

Storage

Storage:

Store at -20°C. Stable for one year after shipment.

Storage Buffer:

PBS with 0.02% sodium azide and 50% glycerol pH 7.3.

Aliquoting is unnecessary for -20°C storage

*** 20ul sizes contain 0.1% BSA

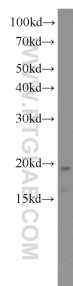
For technical support and original validation data for this product please contact:

T: 1 (888) 4PTGLAB (1-888-478-4522) (toll free in USA), or 1(312) 455-8498 (outside USA)

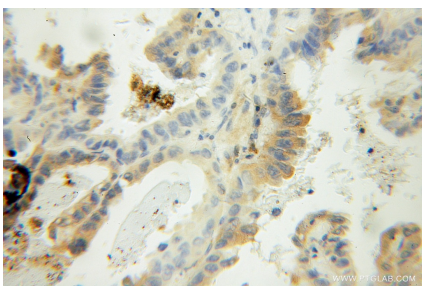
E: proteintech@ptglab.com
W: ptglab.com

This product is exclusively available under Proteintech Group brand and is not available to purchase from any other manufacturer.

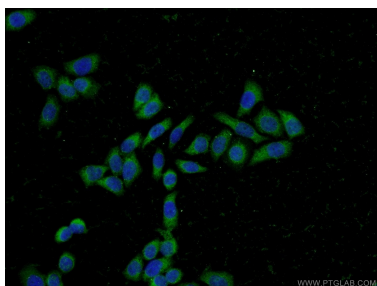
Selected Validation Data



L02 cells were subjected to SDS PAGE followed by western blot with 13053-1-AP (PFDN2 antibody) at dilution of 1:300 incubated at room temperature for 1.5 hours.



Immunohistochemical analysis of paraffin-embedded human lung cancer using 13053-1-AP (PFDN2 antibody) at dilution of 1:100 (under 10x lens).



Immunofluorescent analysis of L02 cells using 13053-1-AP (PFDN2 antibody) at dilution of 1:50 and Alexa Fluor 488-conjugated Goat Anti-Rabbit IgG(H+L).